



Health Equity Unit

Krissie Guerard, MS, Health Equity Director



Health & Human Services

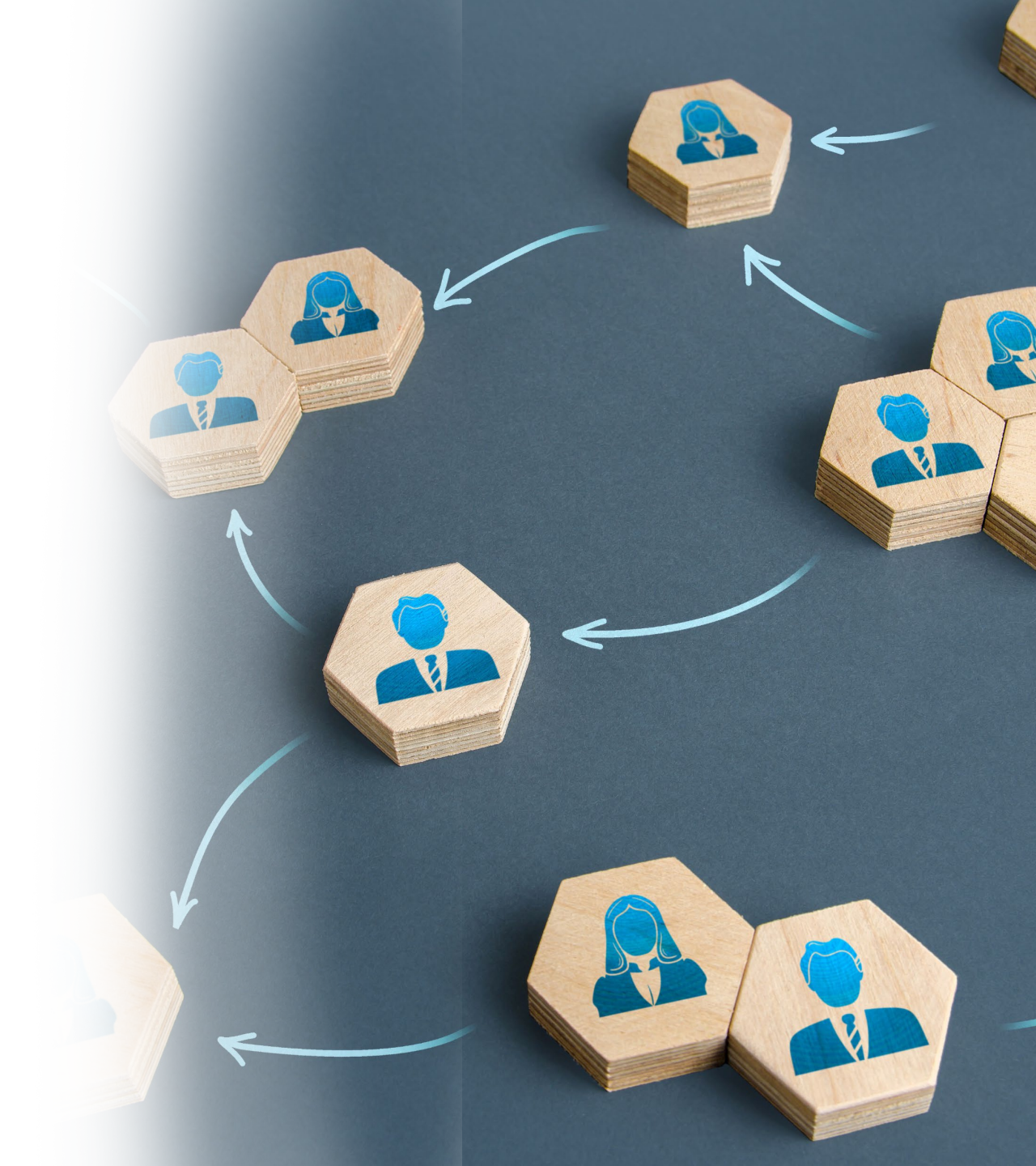
Health Equity Unit (HEU)

Health equity is giving everyone the same opportunity to the highest level of health care that meets their needs.

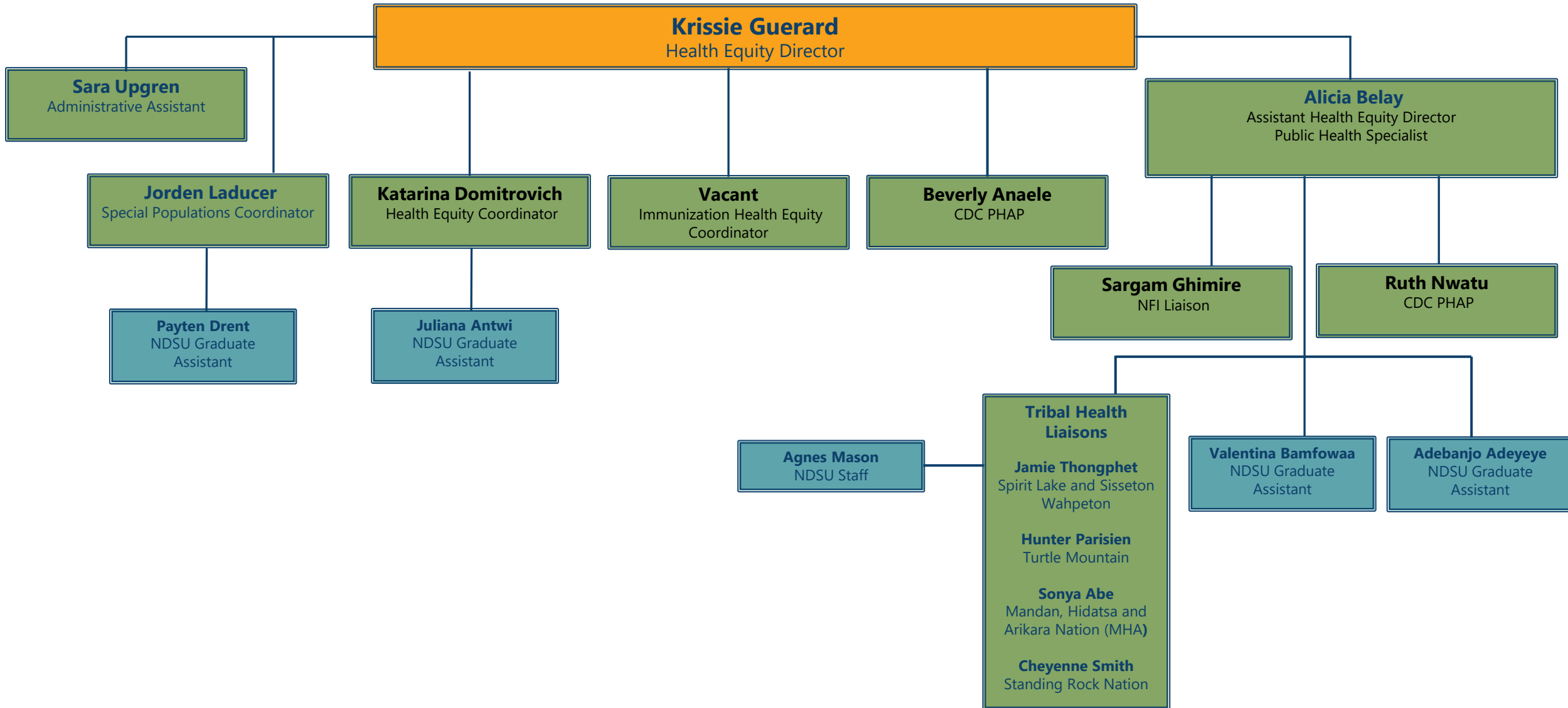
The Public Health Division HEU works to understand and reduce health disparities among all North Dakotans. The primary goal is to reduce rates of disease by providing opportunities for interventions and improving access to health care. This will ensure all North Dakotans receive the highest quality of health.

HEU Evolution

- Health Equity Director
- CDC Public Health Associate (PHAP)
- Public Health Specialist
- Special Populations Coordinator
- PHAP
- Health Disparities Immunization Coordinator
- Healthy Equity Coordinator
- Tribal Health and NFI Liaisons

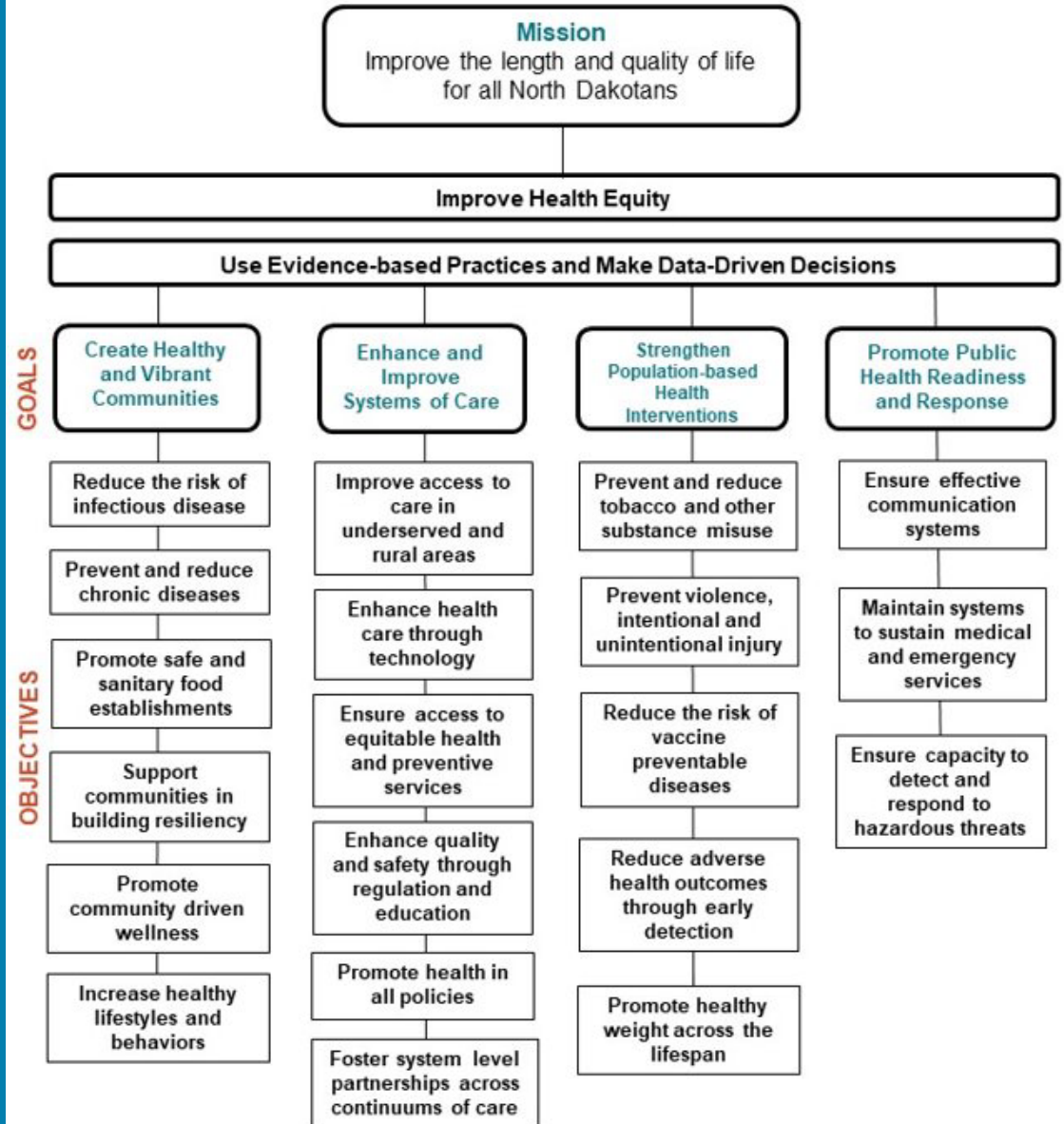


Health Equity Unit



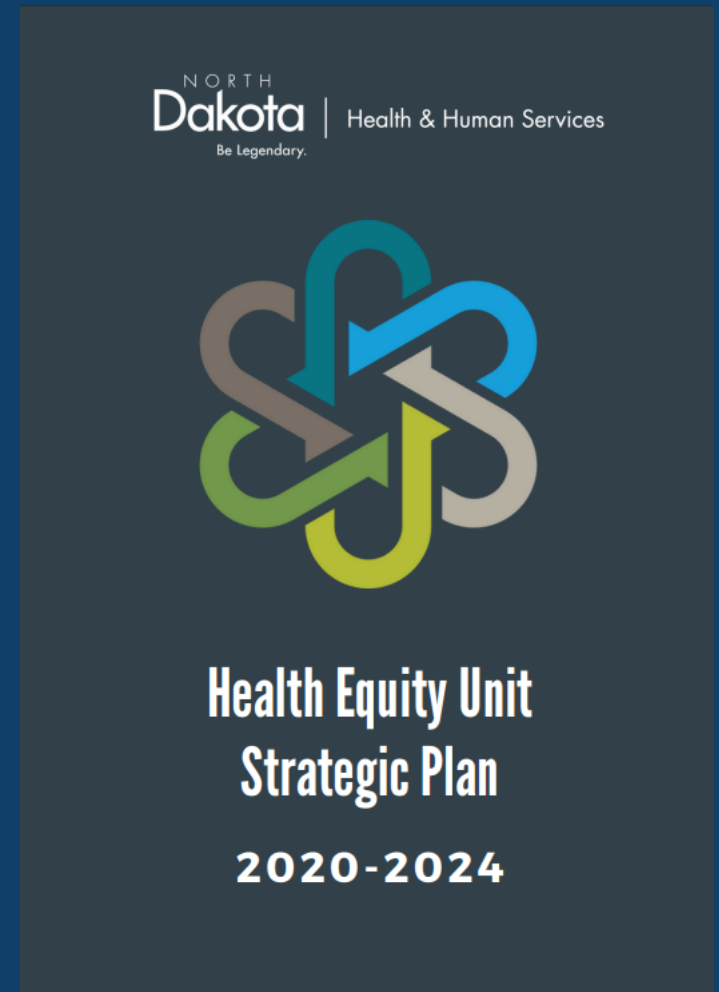
Public Health Strategic Plan

Strategic Plan: 2021 – 2023

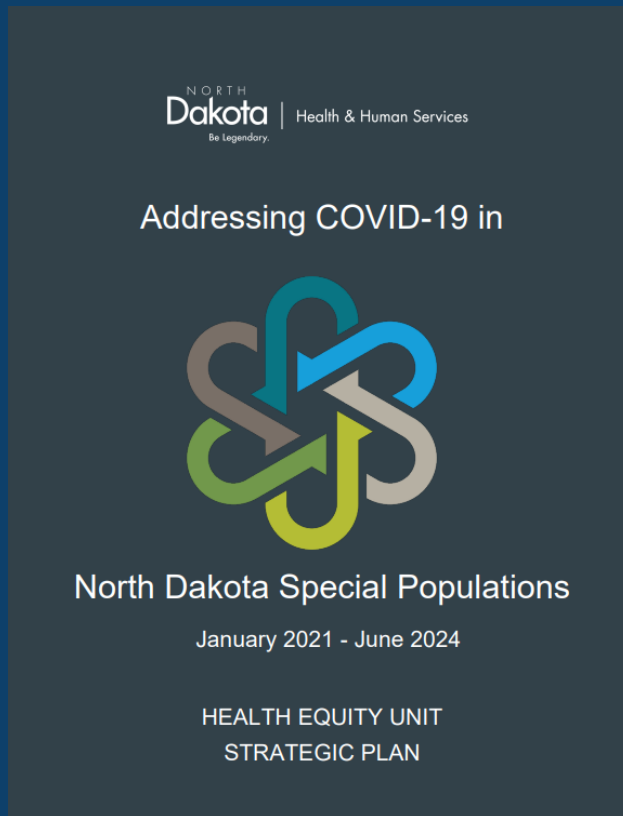


HEU Strategic Plan

- Plan originated from the NDDoH Strategic Plan
- Front cover symbol represents committee-approved method of highlighting data disparities
- Living, public document that is updated monthly
- Includes 20 SMART goals and specific strategies to address additional public health inequities:
 - Obesity
 - Injury
 - Training
 - Policy and systems change
 - Public, private and community partnerships
 - Communications
 - Advisory Boards
- Identifies populations of focus, accreditation standards and tracking method



HEU COVID-19 Strategic Plan



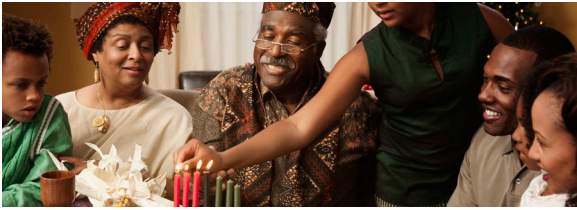
- Living, public document
- Updated monthly
- Identify activity to address need, partners, and tracking method
- Includes 106 goals to address COVID-19 disparities among

Special Populations in North Dakota:

- New American/Foreign Born/Immigrant (NFI)
- African American
- American Indian/Alaskan Natives
- Persons with disabilities
- Aging or elderly
- LGBTQ2S+
- Homeless
- Rural

ADVISORY BOARDS

New American/Foreign Born/Immigrant (NFI)



- The NFI Advisory Board members represent a diverse cross-section of individuals and organizations with a tie to NFI communities

BeYOU LGBTQ2S+



- 18+
- Ally, provider and/or members of the LGBTQ2S+ community

Youth (YAB)



- 15-21 years old
- Provide insight-ensuring youth perspectives are incorporated in planning and decisions for the state, as well as forming community partnerships

Tribal Health



- Led by North Dakota State University American Indian Public Health Resource Center

Health Equity Unit Projects

- Health equity training series
- Public Health Ambassador Program (Minot State, UTTC and UND)
- Contracts for COVID-19 and health equity in various Community-Based Organizations and Local Public Health
- Infectious disease education and trainings to North Dakota special populations
- Community health fairs
- COVID-19 testing and vaccination efforts
- Pediatric Mental Health Care Access collaboration
- Women's health events
- Assisting the HIV program with strategic planning

Tribal Health Liaisons

Assisting in AIM 11 of the Behavioral Health Strategic Plan:

Partner with Tribal Nations to increase health equity for American Indian populations

Cheyenne Smith

- Primarily Assigned to Standing Rock Nation
- Secondary to Mandan, Hidatsa, Arikara Nation

Sonya Abe

- Primarily Assigned to Mandan, Hidatsa, Arikara Nation
- Secondary to Standing Rock Nation

Jamie Thongphet

- Primarily Assigned to Spirit Lake and Sisseton Wahpeton Oyate Nations
- Secondary to Turtle Mountain Band of Chippewa Nation

Hunter Parisien

- Primarily Assigned to Turtle Mountain Band of Chippewa Nation
- Secondary to Spirit Lake and Sisseton Wahpeton Oyate Nations



Thank You

Health Equity Unit | healthequity@nd.gov

NORTH
Dakota
Be Legendary.

Health & Human Services