

NCI-IDD™ In-Person Survey 2023-24 DATA AT A GLANCE

SURVEY RESULTS FOR NORTH DAKOTA

SAMPLE

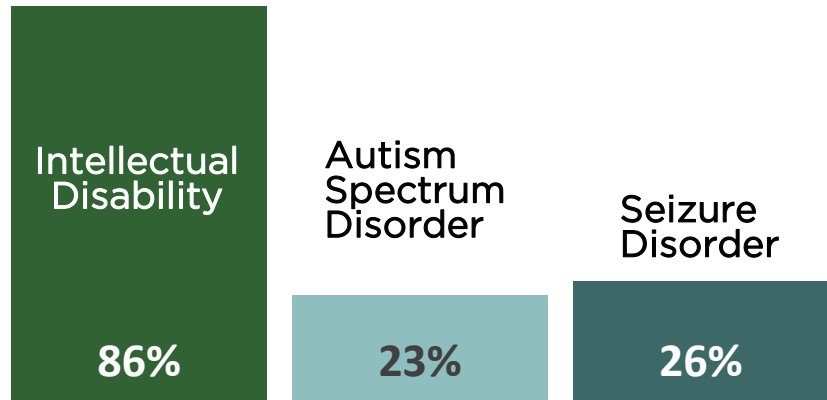
411

total respondents

The survey data in this summary represent the population of adults with intellectual and developmental disabilities (IDD) receiving at least one service in addition to case management/ service coordination from their state developmental disability service system. For details, visit: <https://bit.ly/NCIFAQs>

DIAGNOSIS AND MEDICATIONS

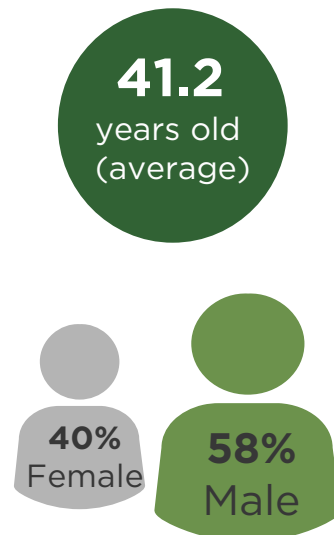
Note: Diagnoses are not mutually exclusive



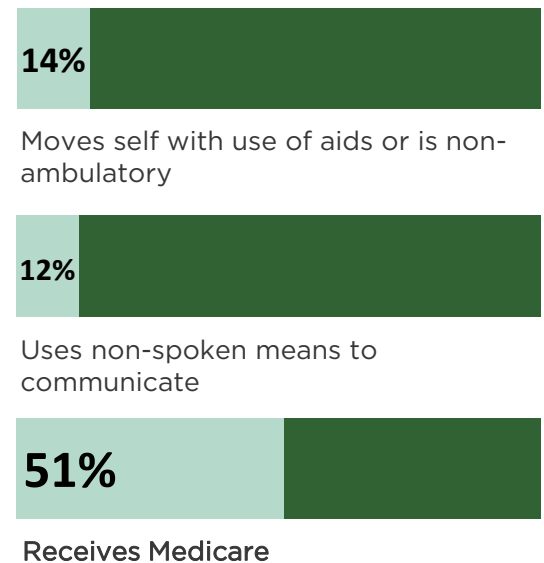
RACE AND ETHNICITY

90% White
3% Black or African American
2% Hispanic or Latino
1% Asian
6% American Indian/ Alaska Native
0% Other/Don't know

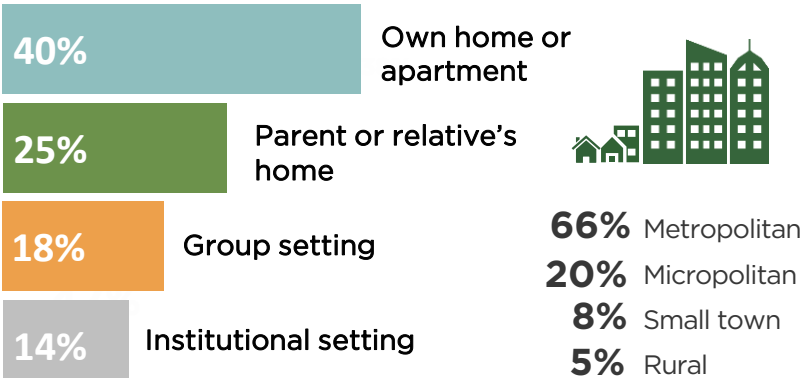
AGE AND GENDER



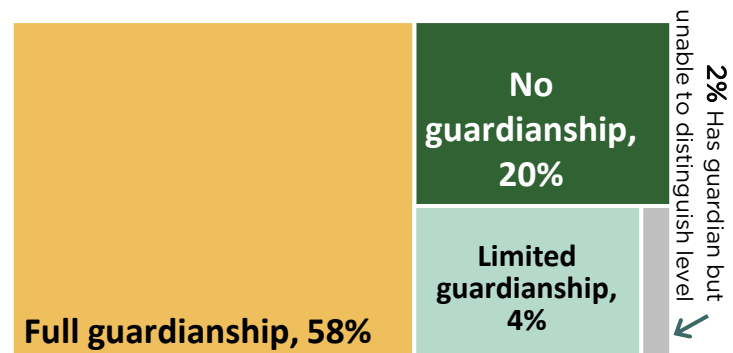
OTHER CHARACTERISTICS



RESIDENCE TYPE & LOCATION



LEVEL OF GUARDIANSHIP



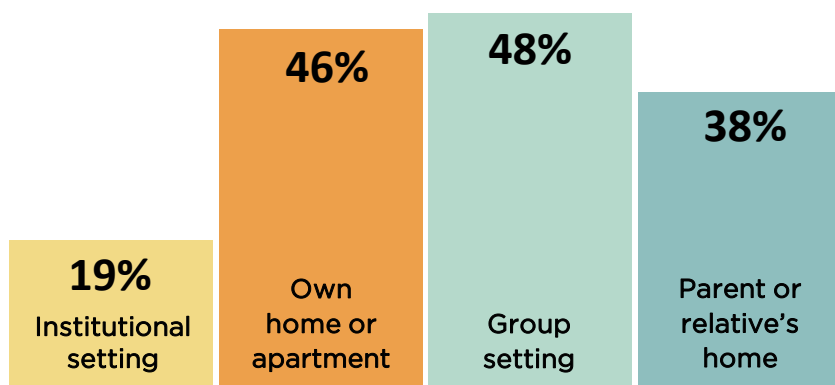
2023-24 DATA AT A GLANCE

SURVEY RESULTS FOR NORTH DAKOTA

EMPLOYMENT

42% of respondents have a paid job in the community.

The figure below shows the percent of people with paid jobs by type of residence.



Biweekly hours and wages vary by type of paid community job. Those working individual jobs with publicly funded supports:

30.71 hours
worked over 2 weeks

\$12.56
average hourly wages

18% Of those who do not have a paid community job want one

INCLUSION AND ACCESS TO COMMUNITY



75% can do things in the community as much as they want to



86% can do things in the community with the people they want



39% take part in groups, organizations, or communities



26% want to be part of more groups in their community



81% are able to get places when they want to do something outside their home



96% have a way to get places they need to go (like work, appointments)

RELATIONSHIPS

82%

Have friends who are not staff or family

78%

Can meet with their friends in person when they want

50%

Want help to make new friends or keep in contact with friends

9%

Often feel lonely

DATA SUMMARY



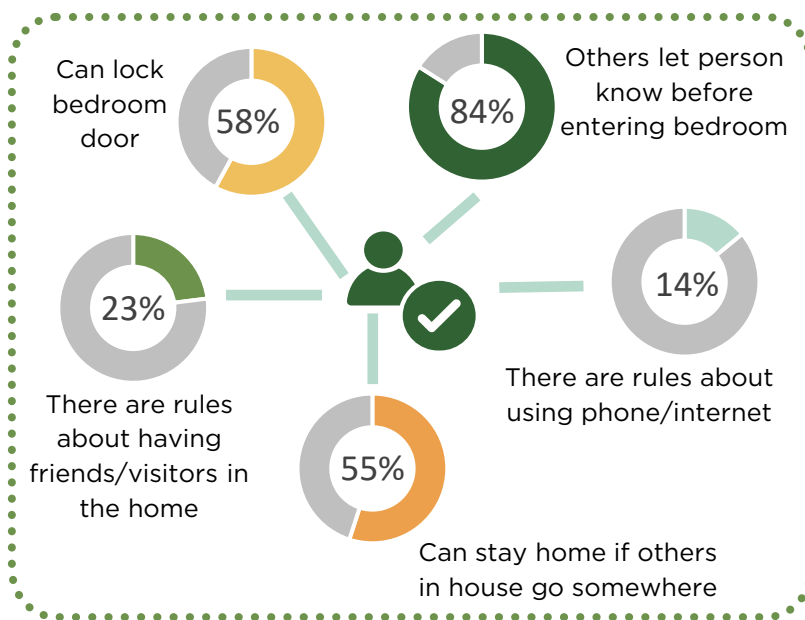
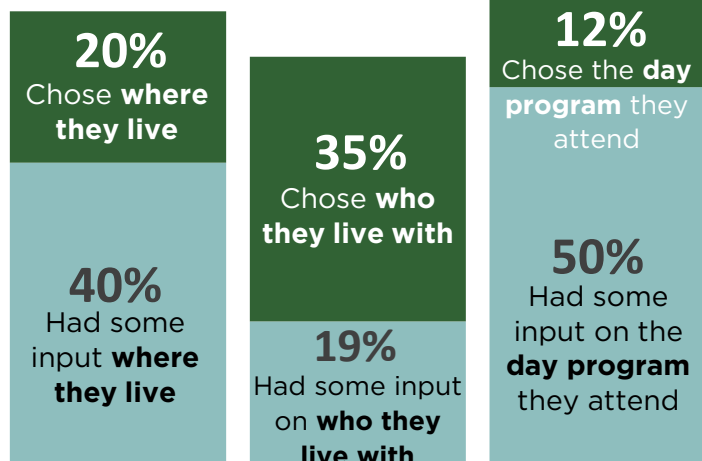
Access to the community is considered a key feature of home and community-based services. Many of these outcomes vary widely by residence type (e.g., group homes or with family) and other factors. Overall, the majority of IPS respondents indicate they have transportation, relationships, and access to the community. However, few people with IDD work in paid community jobs and take part in community groups. *In fact, for every 1 IPS respondent who works, there are nearly 3 respondents who are unemployed but wish to work.* **These data suggest that systems can better identify barriers to community participation, and leverage person-centered planning to support people with IDD to engage in communities in the ways they want.**

2023-24 DATA AT A GLANCE

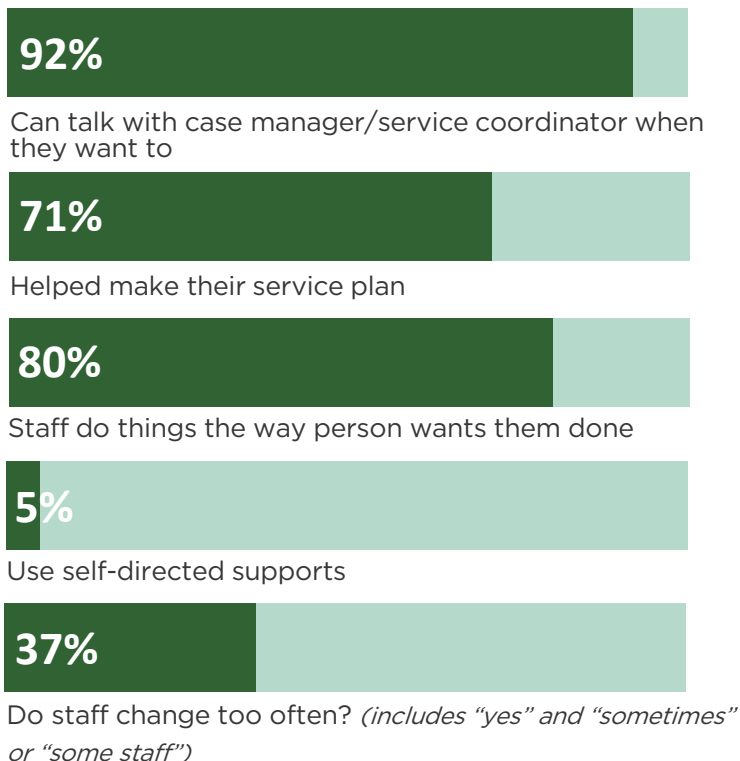
SURVEY RESULTS FOR NORTH DAKOTA

CHOICE, RIGHTS AND RESPECT

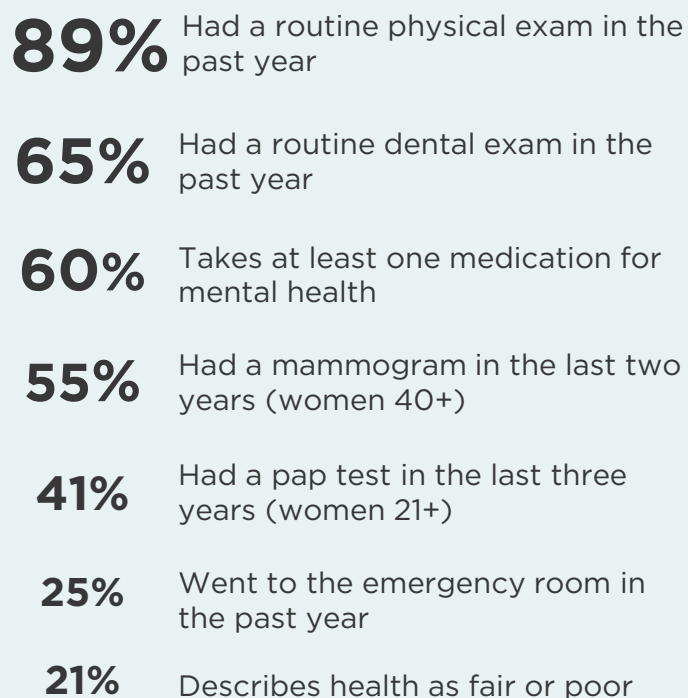
IPS respondents who had at least some input into key life decisions:



SERVICE COORDINATION AND WORKFORCE



HEALTH AND ACCESS TO HEALTHCARE



DATA SUMMARY



Services provided through state DD systems must be person-centered. The majority of IPS respondents helped make their service plan, and an average of 3 in 5 respondents have at least some input in choices about key aspects of their services, like the place they live, the people they live with, and the day programs they attend. In addition, IPS respondents have relatively high levels of preventive healthcare use, but nearly 1 in 3 respondents went to the ER in the past year and more than 1 in 10 describe their health as fair or poor. These data highlight areas of opportunity to strengthen person-centered care, enhance opportunities for choice and control over services, and enable service providers to support wellbeing of people with IDD.