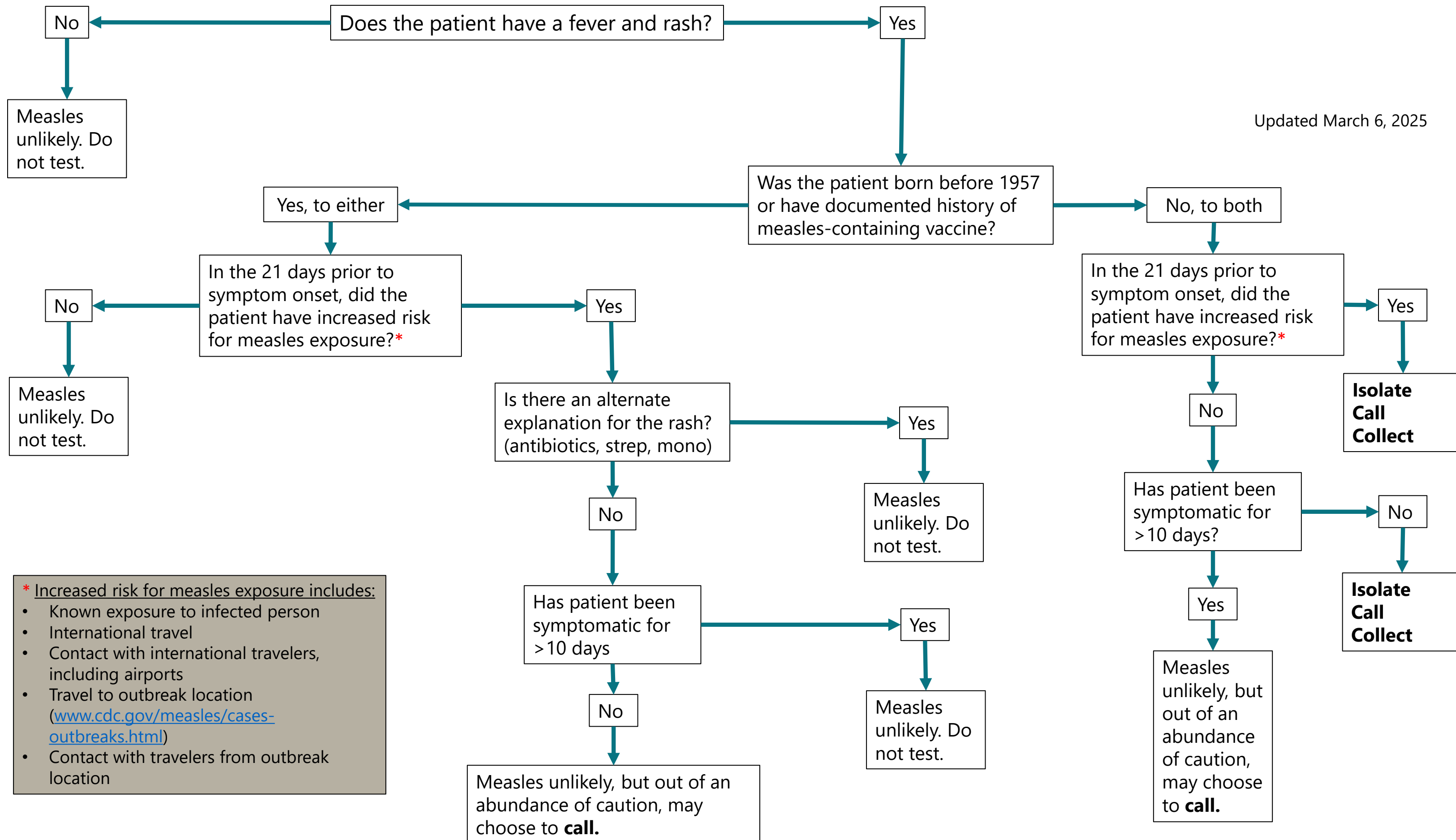


# Should I test for measles?

Updated March 6, 2025



## Isolate

Isolate the patient according to airborne precautions.

## Call

Call the North Dakota  
HHS Disease Control and Forensic Pathology  
Section (available 24 hours a day)  
**701-328-2378**

## Collect

Collect specimens for laboratory testing.  
(NP or throat swab for PCR and blood for serology)