

# Measles in the Ambulance

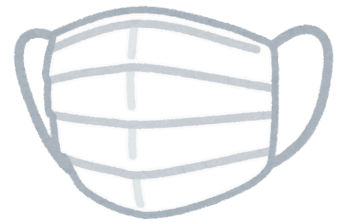


## ASK

Does the patient have a rash that started on the head? Are they coughing, have pink or watery eyes, a fever, and a runny nose? Have they traveled outside the country? Have they traveled to a part of the US where there is a measles outbreak? Are they vaccinated?

## Put on your PPE-gloves, eye protection, gowns, and an N95 if you suspect measles

If available use a negative air pressure system. Measles is highly contagious and is spread through respiratory droplets when a person coughs or sneezes. Turn on the exhaust fan.

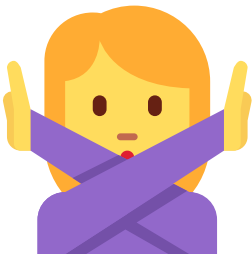


## Let the hospital know you suspect measles

This will allow them time to set up a negative pressure room and create a path to minimize exposure to the department.

## Disinfect ALL surfaces and equipment

Measles can remain airborne up to 2 hours after the patient has left the ambulance



**DO NOT** let pregnant or un-vaccinated personnel care for a patient with suspected measles.



**NORTH DAKOTA**  
EMSC State Partnership Program

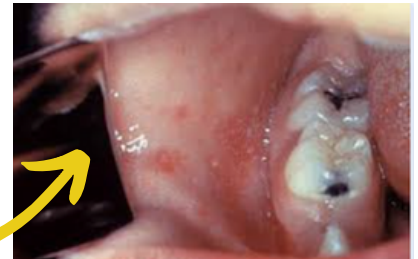
# Measles

## a basic overview

- **Measles** is an **EXTREMELY** contagious disease that is spread person to person when an infected person sneezes or coughs.
- Because the particles are so small they can remain in the air for up to **2 hours after an infected person has been in the area.**
- Measles can be **contagious 4 days before and after a rash appears.**
- When a person with no immunity through immunization or prior infection is exposed to measles virus, the probability of contracting disease is very high – over **90%** for a single encounter. A single person with measles spreads disease to an average of **18** other people if those people are not immune due to immunization or prior infection.
- Measles is also known as Rubeola, not to be confused with Rubella.

### Symptoms

- **Typically appear within 7-12 days after exposure**
- Cough, runny nose, pink or watery eyes
- **Koplik spots**-tiny white spots inside the mouth
- Almost always begin with fever, followed by a blotchy, flat **rash** that starts on the face



### Treatment

- No specific antiviral treatment for measles

### Prevention

- **IMMUNIZATION**
- The measles vaccine is safe and after two recommended doses are given it is over 97% effective

