

North Dakota Health Profile



December 2018

NORTH
Dakota | Health
Be Legendary.™

Authors:

Tracy K. Miller, PhD, MPH
State Epidemiologist

Kodi Pinks, MPH
Epidemiologist

Tara Haugen
Epidemiologist

Matt Schmidt
Epidemiologist Intern

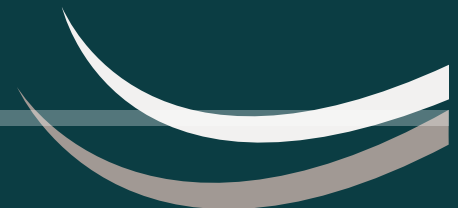
Table of Contents

POPULATION DATA	1
TABLE 1: POPULATION BY AGE GROUP	1
TABLE 2: FEMALE POPULATION & PERCENTAGE BY AGE	1
TABLE 3: RACE.....	1
TABLE 4: HOUSEHOLD POPULATIONS.....	2
TABLE 5: MARITAL STATUS OF PERSONS AGE 15+	2
TABLE 6: EDUCATIONAL ATTAINMENT AMONG PERSONS 25+	2
TABLE 7: POPULATION CHANGE.....	3
<i>Figure 1: North Dakota: A story told through demographics.....</i>	3
TABLE 8: PERSONS WITH DISABILITY.....	4
TABLE 9: INCOME AND POVERTY STATUS BY AGE GROUP.....	4
TABLE 10: FAMILY, CHILDHOOD, & ELDERLY POVERTY.....	4
TABLE 11: AGE OF HOUSE.....	4
VITAL STATISTICS DATA.....	5
BIRTH & DEATH DEFINITIONS	5
TABLE 12: BIRTHS.....	6
TABLE 13: CHILD DEATHS.....	6
TABLE 14: DEATHS AND AGE ADJUSTED DEATH RATE BY CAUSE.....	6
TABLE 15: LEADING CAUSES OF DEATH BY AGE GROUP FOR ND	7
ADULT BEHAVIORAL RISK FACTORS	8
TABLE 16:	9
<i>Adult Behavioral Risk Factors Definition</i>	9
<i>Alcohol.....</i>	9
<i>Arthritis.....</i>	9
<i>Asthma.....</i>	9
<i>Body Weight.....</i>	9
<i>Cancer</i>	9
<i>Cardiovascular</i>	9
TABLE 17:.....	10
<i>Cholesterol.....</i>	10
<i>Chronic Lung Disease</i>	10
<i>Colorectal Cancer.....</i>	10
<i>Diabetes.....</i>	10
<i>Fruits & Vegetables</i>	10
<i>General Health.....</i>	10
TABLE 18:.....	11
<i>Health Care Access.....</i>	11
<i>Hypertension.....</i>	11
<i>Immunization</i>	11
<i>Injury.....</i>	11
<i>Oral Health.....</i>	11
<i>Physical Activity.....</i>	11



Table of Contents

CRIME	12
TABLE 19: NORTH DAKOTA.....	12
<i>Figure 2: ND 5-year Crime Rate</i>	12
TABLE 20: UNITED STATES.....	13
<i>Figure 3: USA 5-year Crime Rate</i>	13
FIGURE 4: NORTH DAKOTA DUI RATES	14
FIGURE 5: NORTH DAKOTA DRUG/NARCOTICS CRIME	15
CHILD RISK	16
TABLE 21: CHILD INDICATORS-EDUCATION.....	16
TABLE 22: CHILD INDICATORS-ECONOMIC HEALTH	16
TABLE 23: CHILD INDICATORS-FAMILIES & CHILDCARE	16
TABLE 24: CHILD INDICATORS-JUVENILE JUSTICE	16



Data Sources

The Demographic Section of this report comes from the US Census Bureau (census.gov). Most tables are derived either from the census estimates for 2015 or from the Community Population Survey aggregated over a several year period. The table header describes the specific years from which the data is derived. The tables present the number of persons and percentages which in almost all circumstances represent the category specific percentage of all persons referenced by the table (e.g., percentage of persons age 15 and older who are married). Age specific poverty rates represent the percentage of each age group in poverty (e.g., percentage of children under five years in poverty).

The **Vital Statistics** section of this report comes from the birth and death records collected by the North Dakota Department of Health Vital Records. This data is aggregated over a five year period. All births and deaths represent the county of residence not the county of occurrence. In order to maintain a person's confidentiality, the number of events is blocked if fewer than six.

The **Adult Behavioral Risk Factor** section of this report is derived from the North Dakota Department of Health's Behavioral Risk Factor Surveillance Survey. The aggregated data (the number of years specified in the table) is continuously collected by telephone survey from persons 18 years and older residing in North Dakota. All data is self-reported data.

Data presented in the **Crime** section of this report is collected from the North Dakota Attorney General website located at: attorneygeneral.nd.gov/public-safety/crime-data/crime-reports and the Federal Bureau of Investigation Uniform Code Reporting.

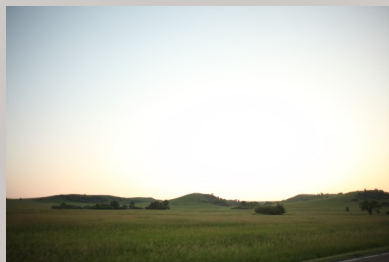
Data presented in the **Child Health Indicators** section of this report is collected from the Kids Count Data Center website located at: datacenter.kidscount.org.

Photography Credits

Permission to use photos granted by:

- **ND Tourism Division**

ndtourism.com



Population Data

Table 1

Population by Age Group 2016 Census Estimates				
Age	North Dakota		United States	
	Number	Percent	Number	Percent
0-9	105,035	13.9%	40,356,836	12.5%
10-19	93,820	12.4%	41,748,232	12.9%
20-29	127,579	16.8%	45,271,912	14.0%
30-39	101,492	13.4%	42,560,264	13.2%
40-49	79,632	10.5%	40,643,874	12.6%
50-59	95,466	12.6%	43,819,164	13.6%
60-69	80,159	10.6%	36,303,119	11.2%
70-79	41,996	5.5%	20,178,142	6.2%
80+	32,773	4.3%	12,245,970	3.8%
Total	757,952	100.0%	323,127,513	100.0%
0-17	176,311	23.3%	73,642,285	22.8%
65+	109,999	14.5%	49,244,195	15.2%

Table 2

Female Population & Percent Female by Age, 2016 Census Estimates				
Age	North Dakota		United States	
	Number	Percent	Number	Percent
0-9	51,145	13.9%	19,740,060	12.0%
10-19	45,349	12.3%	20,427,654	12.5%
20-29	58,619	15.9%	22,149,373	13.5%
30-39	47,001	12.7%	21,215,558	12.9%
40-49	37,992	10.3%	20,491,598	12.5%
50-59	46,809	12.7%	22,405,574	13.7%
60-69	39,397	10.7%	19,050,568	11.6%
70-79	22,236	6.0%	11,000,333	6.7%
80+	20,430	5.5%	7,567,872	4.6%
Total	368,978	100.0%	164,048,590	100.0%
0-17	85,921	23.3%	36,033,070	22.0%
65+	60,025	16.3%	27,451,369	16.7%

Table 3

Race, 5-Year Estimates (2012-2016)				
Race	North Dakota		United States	
	Number	Percent	Number	Percent
Total	736,162	100%	318,558,162	100%
White	649,730	88.3%	233,657,078	73.3%
Black	14,761	2.0%	40,241,818	12.6%
Am. Indian	38,369	5.2%	2,597,817	0.8%
Asian	9,296	1.3%	16,614,625	5.2%
Pac. Islander	336	0.0%	560,021	0.2%
Other	5,691	0.8%	15,133,856	4.8%
Multi-race	17,979	2.4%	9,752,947	3.1%



Population Data

Household Populations, 2011 ACS Five Year Estimates				
	North Dakota		United States	
	Number	Percent	Number	Percent
Total	666,783	100.0%	306,603,772	100.0%
In Family Households	509,097	76.4%	250,256,921	81.6%
In Non-Family Households	132,651	19.9%	48,340,627	15.8%
Total In Households	641,748	96.2%	298,597,548	97.4%
Institutionalized*	9,675	1.5%	3,993,659	1.3%
Non-institutionalized*	15,360	2.3%	4,012,565	1.3%
Total in Group Quarters	2,5035	3.8%	8,006,224	2.6%

Table 4

Marital Status of Persons Age 15 and Older, 2016 ACS 5 Year Estimate				
Marital Status	North Dakota		United States	
	Number	Percent	Number	Percent
Total Age 15+	594,068	100.0%	257,518,302	100.0%
Never Married	189,508	31.9%	84,981,040	33.0%
Now Married	308,915	52.0%	123,866,303	48.1%
Separated	5,347	0.9%	5,407,884	2.1%
Widowed	33,862	5.7%	15,193,580	5.9%
Divorced	56,436	9.5%	28,327,013	11.0%

Table 5

Educational Attainment Among Persons 25+ 2016 ACS 5 Year Estimate				
Education	North Dakota		United States	
	Number	Percent	Number	Percent
Total	477,607	100.0%	213,649,147	100.0%
Less than 9th Grade	16,846	3.5%	11,913,913	5.6%
Some High School	21,188	4.4%	15,904,467	7.4%
High school or GRE	131,086	27.4%	58,820,411	27.5%
Some College/Assoc. Degree	173,933	36.4%	62,242,569	29.2%
Bachelor's degree	97,890	20.5%	40,189,920	18.8%
Post Graduate Degree	36,664	7.7%	24,577,867	11.5%

Table 6



Population Data

Table 7

Population Change 2000-2015				
Census	North Dakota		United States	
2000	642,200	5 Year Change (%)	282,162,411	5 Year Change (%)
2005	635,365	-1.1%	295,516,599	4.7%
2010	672,591	5.9%	309,338,421	4.7%
2015	754,859	12.2%	321,039,839	3.8%

North Dakota: A Story Told Through Demographics

North Dakota County Population Change, 2010-2015

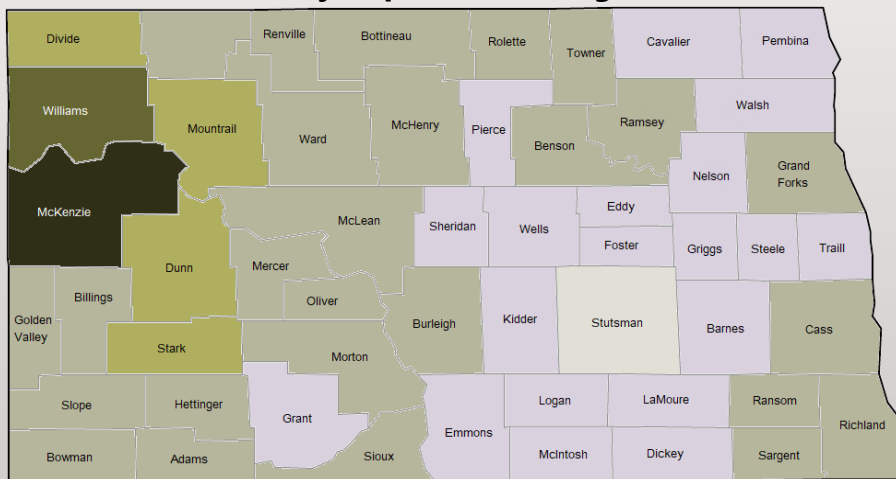
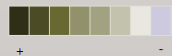


Figure 1



Population estimates every 5 years have typically shown steady growth in North Dakota. Between the 2010 census and 2015 estimate, though, North Dakota saw a gain of over 82,000 people, or 12.2%.

According to the North Dakota Census Office, this dramatic increase, as indicated by the map to the left, comes largely from domestic immigration due to North Dakota's oil industry, peaking in 2012.

The greatest population increase occurred in McKenzie County, rising over 6,000 people or 101% in just five years. Every county with similar substantial growth was also on the western side of the state. This change in population has not only changed the demographics of each county and state as a whole, but has also made prevalent criminal and health matters that many of these communities have never experienced before. (The darker the color in Figure 2, the greater the population change).

Population Data

Persons with Disability, 2016 ACS Five Year Estimate				
Group	North Dakota		United States	
	Number	Percent	Number	Percent
Total	720,312	100.0%	313,576,137	100.0%
Any Disability	77,651	10.8%	39,272,529	12.5%
No Disability	642,661	89.2%	274,303,608	87.5%
Self Care Disability	11,469	1.7%	7,877,505	2.7%
0-17 with any disability	5,618	7.2%	3,042,011	7.7%
18-64 with any disability	38,310	49.3%	20,188,257	51.4%
65+ with any disability	33,723	43.4%	16,042,261	40.8%

Table 8

Income and Poverty Status by Age Group, 2016 ACS Five Year Estimate				
	North Dakota		United States	
	Number	Percent	Number	Percent
Median Household Income		\$59,114		\$55,322
Per Capita Income		\$33,107		\$29,829
	Number	Percent	Number	Percent
Below Poverty Level	79,314	11.2%	46,932,225	15.1%
Under 5 years	7,618	9.6%	4,614,933	9.8%
5 to 11 years	8,423	10.6%	6,129,270	13.1%
12 to 17 years	5,349	6.7%	4,591,580	9.8%
18 to 64 years	48,969	61.7%	27,401,015	58.4%
65 to 74 years	3,532	4.5%	2,210,809	4.7%
75 years and over	5,423	6.8%	1,984,618	4.2%

Table 9

Table 10

Family Poverty and Childhood and Elderly Poverty, 2016 ACS Five Year Estimates				
	North Dakota		United States	
	Number	Percent*	Number	Percent*
Total Families	183,466	100%	77,608,829	100%
Families in Poverty	12,659	6.9%	8,536,971	11.0%
Families with Own Children	84,714	46.2%	37,149,436	47.9%
Families with Own Children in Poverty	9,912	5.4%	6,464,002	8.3%
Families with Own Children and Female Parent Only	17,081	9.3%	15,146,112	40.8%
Families with Own Children and Female Parent Only in Poverty	6,115	3.3%	6,013,006	7.8%
Total Known Children in Poverty	21,390	12.1%	15,335,783	20.8%
Total Known Age 65+ in Poverty	8,955	8.1%	4,195,427	8.5%

Table 11

Age of Housing, 2016 ACS Five Year Estimates				
	North Dakota		United States	
	Number	Percent	Number	Percent
Housing units: Total	350,134	100%	134,054,899	100%
1980 and Later	149,657	42.7%	59,921,149	44.7%
1970 to 1979	67,069	19.2%	20,901,765	15.6%
Prior to 1970	133,408	38.1%	53,231,985	39.7%

Formulas for calculating rates and ratios are as follows:

Birth Rate = Resident live births divided by the total resident population x 1,000.

Pregnancies = Live births + Fetal deaths + Induced termination of pregnancy.

Pregnancy Rate = Total pregnancies divided by the total resident population x 1,000.

Fertility Rate = Resident live births divided by female population (age 15-44) x 1,000.

Teenage Birth Rate = Teenage births (age <20) divided by female teen population x 1,000.

Teenage Pregnancy Rate = Teenage pregnancies (age <20) divided by female teen population x 1,000.

Out of Wedlock (OOW) Live Birth Ratio = Resident OOW live births divided by total resident live births x 1,000.

Out of Wedlock Pregnancy Ratio = Resident OOW pregnancies divided by total pregnancies x 1,000.

Low Weight Ratio = Low weight births (birth weight < 2500 grams) divided by total resident live births x 1,000.

Infant Death Ratio = Number of infant deaths divided by the total resident live births x 1,000.

Childhood & Adolescent Deaths = Deaths to individuals 1 - 19 years of age.

Childhood and Adolescent Death Rate = Number of resident deaths (age 1 - 19) divided by population (age 1 - 19) x 100,000.

Crude Death Rate = Death events divided by population x 100,000.

Age-Adjusted Death Rate = Death events with age specific adjustments x 100,000 population.



Vital Statistics Data

Births, 2012-2016				
	North Dakota		United States	
	Number	Rate or Ratio	Number	Rate or Ratio
Live Births and Rate	52,514	15.6	19,797,470	12.4
Pregnancies and Rate	57,065	17.0	N/A	N/A
Fertility Rate	81.3		1765.5	
Teen Births and Rate	2,876	25.2	209,809	20.0
Teen Pregnancies and Rate	3,377	29.6	N/A	N/A
Out of Wedlock Births and Ratio	17,005	323.8	1,569,796	N/A
Out of Wedlock Pregnancies and Ratio	20,769	364.0	N/A	N/A
Low Birth Weight Birth and Ratio	3,299	62.8	321,839	N/A

Table 12

Child Deaths, 2012-2016				
	North Dakota		United States	
	Number	Rate or Ratio	Number	Rate or Ratio
Infant Deaths and Ratio	290	5.5	116,900	5.9
Child and Adolescent Deaths and Rate	249.0	30.6	96,968	24.8
Total Deaths and Crude Rate	29,930	890.0	13,223,568	730.2

Table 13

Table 14

Deaths and Age Adjusted Death Rate by Cause, 2012-2016		
	North Dakota	
	Number	Adj. Rate
All Causes	30,303	674.8
Heart Disease	6,571	140.3
Cancer	6,215	142.1
Stroke	1,546	31.9
Alzheimer's Disease	2,130	41.2
COPD	1,623	35.2
Unintentional Injury	1,764	45.9
Diabetes Mellitus	908	20.6
Pneumonia and Influenza	791	16.5
Cirrhosis	429	11.6
Suicide	630	18.4
Hypertension	467	9.5



Vital Statistics Data

Table 15

Leading Causes of Death by Age Group for North Dakota, 2012-2016			
Age	1	2	3
0-4	Congenital Anomaly 53	Prematurity 50	Sudden Infant Death 45
5-14	Unintentional Injury 21	Suicide 6	Homicide*
15-24	Unintentional Injury 191	Suicide 127	Cancer 16
25-34	Unintentional Injury 211	Suicide 125	Heart 50
35-44	Unintentional Injury 184	Suicide 107	Heart 99
45-54	Cancer 350	Heart 282	Unintentional Injury 210
55-64	Cancer 1,094	Heart 646	Unintentional Injury 192
65-74	Cancer 1,563	Heart 902	COPD 348
75-84	Cancer 1,793	Heart 1,441	COPD 565
85+	Heart 3,141	Alzheimer's Disease 1,566	Cancer 1,261

*Number less than six are not listed



Adult Behavioral Risk Factors Definition

The following three pages represent data received from the Adult Behavioral Risk Factor Surveillance Survey. Numbers given are point estimate percentages followed by 95% confidence intervals. Statistical significance can be determined by comparing confidence intervals between two geographic areas. To be statistically significant, confidence may not overlap. For example the confidence intervals 9.3 (8.3-10.2) and 10.8 (10.0-11.6) overlap, so the difference between the two numbers is not statistically significant. That means that substantial uncertainty remains whether the apparent difference is due to chance alone (due to sampling variation) rather than representing a true difference in the prevalence of the condition in the two populations. The less they overlap, the more likely it is that the point estimates represent truly different prevalence's in the two populations.



Adult Behavioral Risk Factors, 2011-2015

Table 16

ALCOHOL		North Dakota 2011-2015
Binge Drinking	Respondents who reported binge drinking (5 drinks for men, 4 drinks for women) one or more times in the past 30 days.	24.1 (23.3-24.9)
Heavy Drinking	Respondents who reported heavy drinking (more than 2 drinks per day for men, more than 1 drink per day for women) during the past 30 days.	6.7 (6.3-7.2)
Drunk Driving	Respondents who reported driving when they had too much to drink one or more times during the past 30 days.	3.4 (2.8-3.9)
ARTHRITIS		
Doctor Diagnosed Arthritis	Respondents who reported ever have been told by a doctor or other health professional that they had some form of arthritis.	24.6 (24.0-25.2)
Activity Limitation Due to Arthritis	Respondents who reported being limited in any usual activities because of arthritis or joint symptoms.	47.0 (45.2-48.9)
ASTHMA		
Ever Asthma	Respondents who reported ever having been told by a doctor, nurse or other health professional that they had asthma.	11.9 (11.3-12.4)
Current Asthma	Respondents who reported ever having been told by a doctor, nurse or other health professional that they had asthma and who still have asthma.	8.4 (7.9-8.9)
BODY WEIGHT		
Overweight, Not Obese	Respondents with a body mass index greater than or equal to 25 but less than 30 (overweight).	36.5 (35.7-37.3)
Obese	Respondents with a body mass index greater than or equal to 30 (obese).	30.3 (29.6-31.1)
Overweight or Obese	Respondents with a body mass index greater than or equal to 25 (overweight or obese).	66.8 (66.0-67.7)
CANCER		
Any Cancer	Respondents who reported ever having been told by a doctor, nurse or other health professional that they had cancer (excluding skin cancer).	6.4 (6.1-6.7)
CARDIOVASCULAR		
Heart Attack	Respondents who reported ever having been told by a doctor, nurse or other health care professional that they had a heart attack.	4.3 (4.0-4.5)
Angina	Respondents who reported ever having been told by a doctor, nurse or other health care professional that they had angina.	4.0 (3.7-4.2)
Stroke	Respondents who reported ever having been told by a doctor, nurse or other health care professional that they had a stroke.	2.4 (2.2-2.6)
Cardiovascular Disease	Respondents who reported ever having been told by a doctor, nurse or other health care professional that they had any of the following: heart attack, angina or stroke.	7.5 (7.2-7.8)

Adult Behavioral Risk Factors, 2011-2015

Table 17

CHOLESTEROL		North Dakota 2011-2015
Never Cholesterol Test	Respondents who reported never having a cholesterol test.	22.8 (21.8-23.8)
No Cholesterol Test in Past 5 Years	Respondents who reported never having a cholesterol test in the past five years.	27.2 (26.2-28.3)
High Cholesterol	Respondents who reported that they had ever been told by a doctor, nurse or other health professional that they had high cholesterol.	36.1 (35.1-37.1)
CHRONIC LUNG DISEASE		
COPD	Respondents who have ever been told by a doctor, nurse or other health professional ever told you that they have COPD (chronic obstructive pulmonary disease), emphysema, or chronic bronchitis.	4.7 (4.4-5.0)
COLORECTAL CANCER		
No Colorectal Cancer Screening within Recommended Timeframe	Respondents age 50 and older who reported not having a fecal occult blood test in the past two years.	40.0 (38.3-41.7)
DIABETES		
Diabetes Diagnosis	Respondents who reported ever having been told by a doctor that they had diabetes.	8.5 (8.2-8.9)
FRUITS AND VEGETABLES		
Five Fruits & Vegetables	Respondents who reported that they do not usually eat 5 fruits and vegetables per day.	13.9 (13.2-14.6)
GENERAL HEALTH		
Fair or Poor Health	Respondents who reported that their general health was fair or poor.	14.0 (13.5-14.6)
Poor Physical Health	Respondents who reported they had 8 or more days in the last 30 when their physical health was not good.	11.3 (10.8-11.8)
Poor Mental Health	Respondents who reported they had 8 or more days in the last 30 when their mental health was not good.	11.4 (10.9-12.0)
Activity Limitation Due to Poor Health	Respondents who reported they had 8 or more days in the last 30 when poor physical or mental health kept them from doing their usual activities.	13.6 (12.8-14.4)
Any Activity Limitation	Respondents who reported being limited in any way due to physical, mental or emotional problem.	31.3 (30.6-32.1)



Adult Behavioral Risk Factors, 2011-2015

Table 18

HEALTH CARE ACCESS		North Dakota 2011-2015
Health Insurance	Respondents who reported not having any form of health care coverage.	10.8 (10.2-11.3)
Access Limited by Cost	Respondents who reported needing to see a doctor during the past 12 months but could not due to cost.	7.8 (7.3-8.3)
No Personal Provider	Respondents who reported that they did not have one person they consider to be their personal doctor or health care provider.	26.7 (25.9-27.5)
HYPERTENSION		
High Blood Pressure	Respondents who reported ever having been told by a doctor, nurse or other health professional that they had high blood pressure.	29.9 (29.0-30.7)
IMMUNIZATION		
Influenza Vaccine	Respondents age 65 and older who reported that they did not have a flu shot in the past year.	40.1 (38.9-41.4)
Pneumococcal Vaccine	Respondents age 65 or older who reported never having had a pneumonia shot.	28.5 (27.3-29.7)
INJURY		
Falls	Respondents 45 years and older who reported that they had fallen in the past 12 months.	27.4 (26.2-28.7)
Seatbelt Use	Respondents who reported not always wearing their seatbelt.	61.4 (60.6-62.3)
ORAL HEALTH		
Dental Visit	Respondents who reported that they have not had a dental visit in the past year.	33.7 (32.4-35.0)
Tooth Loss	Respondents who reported they ever had a permanent tooth extracted.	14.3 (13.6-15.1)
PHYSICAL ACTIVITY		
No Leisure Physical Activity	Respondents who reported that they did not get the recommended amount of physical activity.	25.1 (24.4-25.8)
TOBACCO		
Current Smoking	Respondents who reported that they smoked every day or some days.	20.6 (19.9-21.4)
WOMEN'S HEALTH		
Pap Smear	Women 18 and older who reported that they have not had a pap smear in the past three years.	25.1 (23.1-27.1)
Mammogram Age 40+	Women 40 and older who reported that they have not had a mammogram in the past two years.	27.0 (25.4-28.6)

Crime

Data presented on the North Dakota Attorney General website changed from previous years. In an effort to continue to provide this data, the variables are defined as follows which differs slightly from the 2010-2013 data:

- Rape: includes statutory rape and forcible rape
- Assault: only includes aggravated assault

Table 19

North Dakota							
	2012	2013	2014	2015	2016	5 Year	5-Year Rate
Murder	20	14	19	21	17	91	2.5
Rape	243	237	389	428	365	1,662	44.9
Robbery	117	151	166	157	181	772	20.9
Assault	1,071	1,156	1,145	1,185	1,132	5,689	153.7
Violent crime	1,451	1,558	1,719	1,791	1,695	8,214	222.0
Burglary	2,200	2,656	2,490	3,212	3,051	13,609	367.8
Larceny	10,184	10,243	5,214	6,181	6,157	37,979	1,026.4
Motor vehicle theft	1,031	1,228	1,462	1,725	1,887	7,333	198.2
Property crime	13,415	14,127	9,166	11,118	11,095	47,826	1,292.5
Total	14,866	15,685	10,885	12,909	12,790	54,345	1,468.7

North Dakota Crime Reports (Violent & Property)

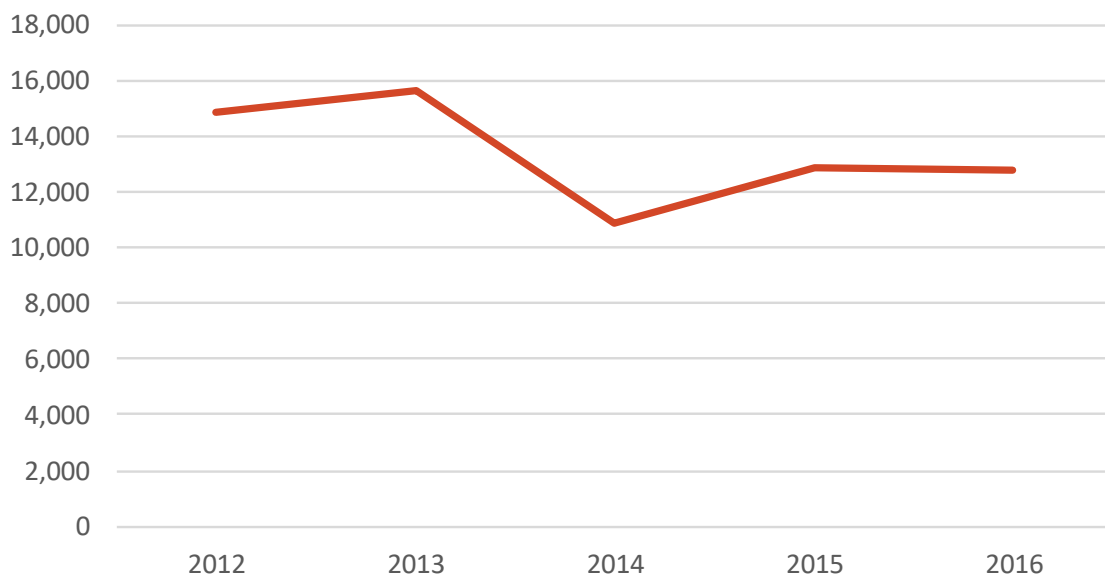


Figure 2

Crime

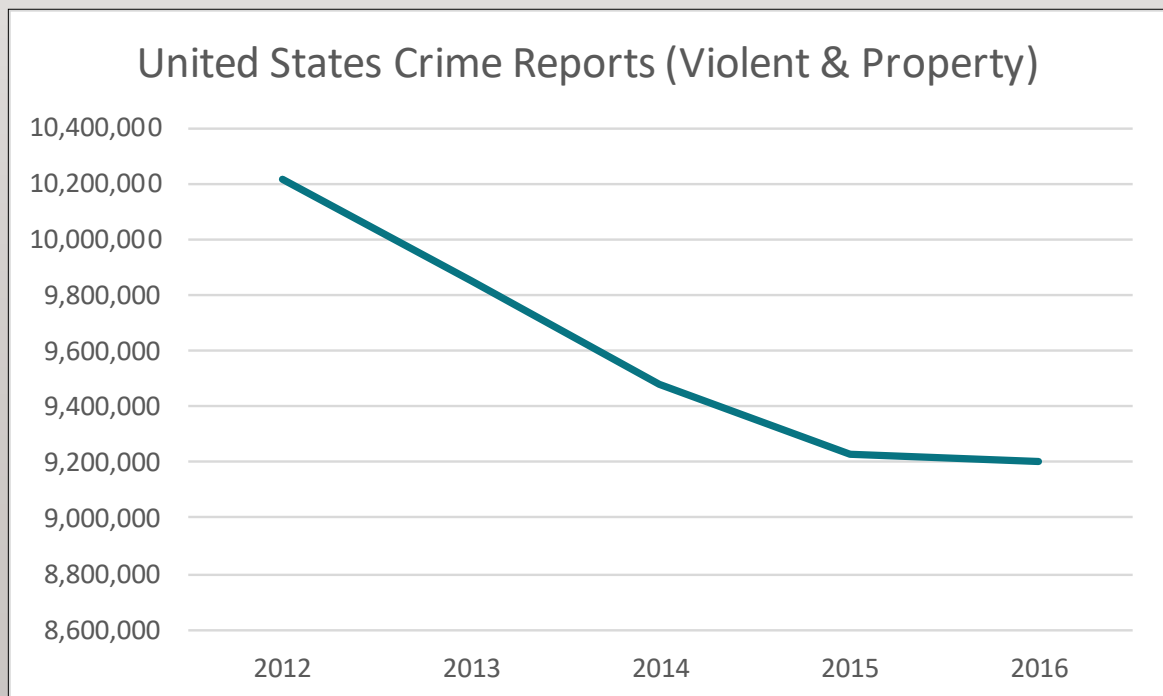
Data presented on the Federal Bureau of Investigations (FBI) Uniform Code Reporting (UCR) website changed in 2013. The variables are defined as follows which differs slightly from previous data:

- Rape: includes statutory rape and forcible rape
- Assault: only includes aggravated assault

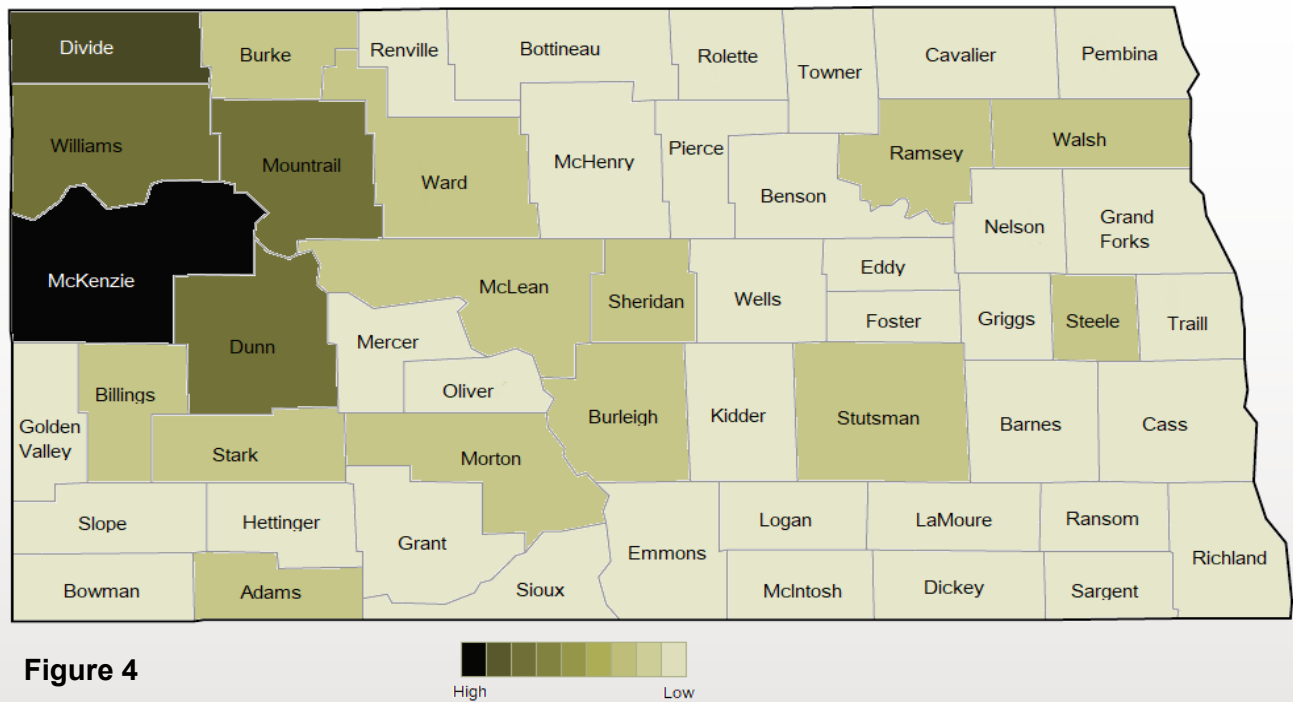
Table 20

United States							
	2012	2013	2014	2015	2016	5 Year	5-Year Rate
Murder	14,866	14,319	14,249	15,696	17,250	76,380	4.8
Rape	85,141	113,695	118,027	126,134	130,603	573,600	36.0
Robbery	355,051	345,095	325,802	327,374	332,198	1,685,520	105.7
Assault	762,009	726,575	741,291	764,449	803,007	3,797,331	238.1
Violent crime	1,217,067	1,199,684	1,199,369	1,233,653	1,283,058	6,132,831	384.6
Burglary	2,109,932	1,931,835	1,729,806	1,579,527	1,515,096	8,866,196	556.0
Larceny	6,168,874	6,018,632	5,858,496	5,706,346	5,638,455	29,390,803	1,843.2
Motor vehicle theft	723,186	700,294	689,527	707,758	765,484	3,586,249	224.9
Property crime	9,001,992	8,650,761	8,277,829	7,993,631	7,919,035	33,924,213	2,127.5
Total	10,219,059	9,850,445	9,477,198	9,227,284	9,202,093	38,773,986	2,431.7

Figure 3



DUI Rates Among ND Counties, 2012-2016



According to the CDC's 2015 BRFSS data, North Dakota ranked first in the United States in binge drinking, as 24.9% of respondents reported binge drinking behavior (5 drinks for men, 4 drinks for women) one or more times in the past 30 days. This figure is notably higher than the national average of 17%. Additionally, the 2012 BRFSS survey found North Dakota 3rd in the nation for drunk driving behind Montana and Nebraska, as 3.3% of respondents reported driving after they've had too much to drink one or more times in the past 30 days.

The ND Attorney General's Office crime reports indicate that from 2012 to 2016 there were a total of 26,257 DUI arrests reported in the state. (DUI's are recorded where the offense occurred) Overall, North Dakota's 5-year DUI rate was 709.61. The highest 5-year DUI rates among ND counties belonged to McKenzie County (3,187.47), Divide County (2,079.38), and Dunn County (1,592.66). Almost all northwest counties in the state had a higher reported DUI rate in the timespan than North Dakota as a whole. This can most likely be attributed to the rapid change in population that the region had encountered during that time period.

Despite the calculated DUI rates, the most reported DUIs occurred in Cass County with 5,071 DUIs being reported in the five year timespan, followed by Burleigh County (4,011) and Ward County (2,695).

Crime



The North Dakota Attorney General's Office reported that between 2012 to 2016 there were 37,576 crimes committed involving drugs or narcotics. This figure includes crimes reported by each county's Sheriff 's Office, Police Departments, the ND Highway Patrol, and Drug Task Forces.

As illustrated by the figure below, North Dakota's drug crime has been increasing year by year. In 2012, 7,261 drug or narcotic related crimes were reported. Five years later, in 2016, the figure rose 59.8% to 11,606 reported crimes. Much of this is contributed to the influx of people to North Dakota during the oil boom.

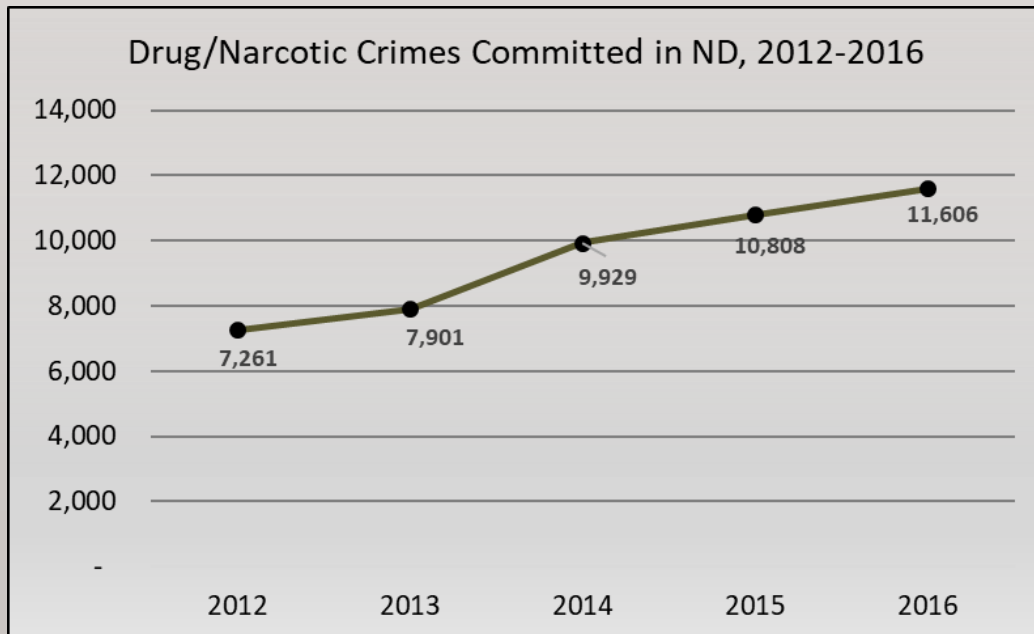


Figure 5

Child Risk

Child Indicators: Education 2016	North Dakota		United States	
	Count	Percent	Count	Percent
Children ages 3 to 21 enrolled in special education in public schools	14,426	13.2%	6,677,000	13.0%
Four-year high school cohort graduation rate	87.3%		84.0%	
Average expenditures per student in public schools	\$11,945		\$13,119	

Table 21

Child Indicators: Economic Health 2016	North Dakota		United States	
	Count	Percent	Count	Percent
TANF recipients ages 0 to 19	4,649	2.4%	2,056,116	2.8%
SNAP recipients ages 0 to 18	37,758	20.5%	44,144,890	N/A
Eligible recipients of free or reduced price lunch	37,928	32.6%	N/A	N/A
Medicaid recipients ages 0 to 20	59,156	28.1%	N/A	N/A
Median income for families with children ages 0 to 17	\$75,818		\$69,200	
Children ages 0 to 17 living in low-income families (<200% of poverty)	50,147	30.5%	29,976,000	41.0%

Table 22

Child Indicators: Families and Child Care 2016	North Dakota		United States	
	Count	Percent	Count	Percent
Women in the labor force, by age of children (ages 0-17)	59,532	79.4%	25,100,000	69.9%
Children ages 0 to 17 living in a single parent families	39,192	23.4%	24,267,000	35.0%
Children in foster care	2,381	1.3%	437,465	N/A
Victims of child abuse and neglect - services required (percent of suspected victims)	1,805	27.2%	N/A	N/A
Births to mothers receiving prenatal care beginning after first trimester or not at all	1,612	14.2%	N/A	N/A

Table 23

Child Indicators: Juvenile Justice 2016	North Dakota		United States	
	Count	Percent	Count	Percent
Children ages 10 to 17 referred to juvenile court	3,471	4.9%	850,500	2.6%

Table 24

N O R T H
Dakota | Health
Be Legendary.™

600 East Boulevard Ave., Dept. 301

Bismarck, ND 58505-0200

701.328.2372

Fax: 701.328.2785

Email: health@nd.gov

ndhealth.gov