

TOPIC 7: PPE PART 1 – EYE PROTECTION



AGENDA

- Introductions
- Videos and Discussion
 - PPE Overview
 - Eye Protection
- Next Steps



LEARNING OBJECTIVES

- Define PPE and describe two (2) functions of PPE in healthcare.
- Discuss one (1) reason that eye protection is recommended for COVID-19.



INTRODUCTIONS



- Katie Glatt ADN, RN
- Bismarck, ND
- COVID-19 Nurse Consultant
- ICAR facilitator
- Project Firstline Facilitator

INTRODUCTIONS



- Morgan Messer ASN, RN
- Jamestown, ND
- COVID-19 Nurse Consultant
- Project First Line Facilitator

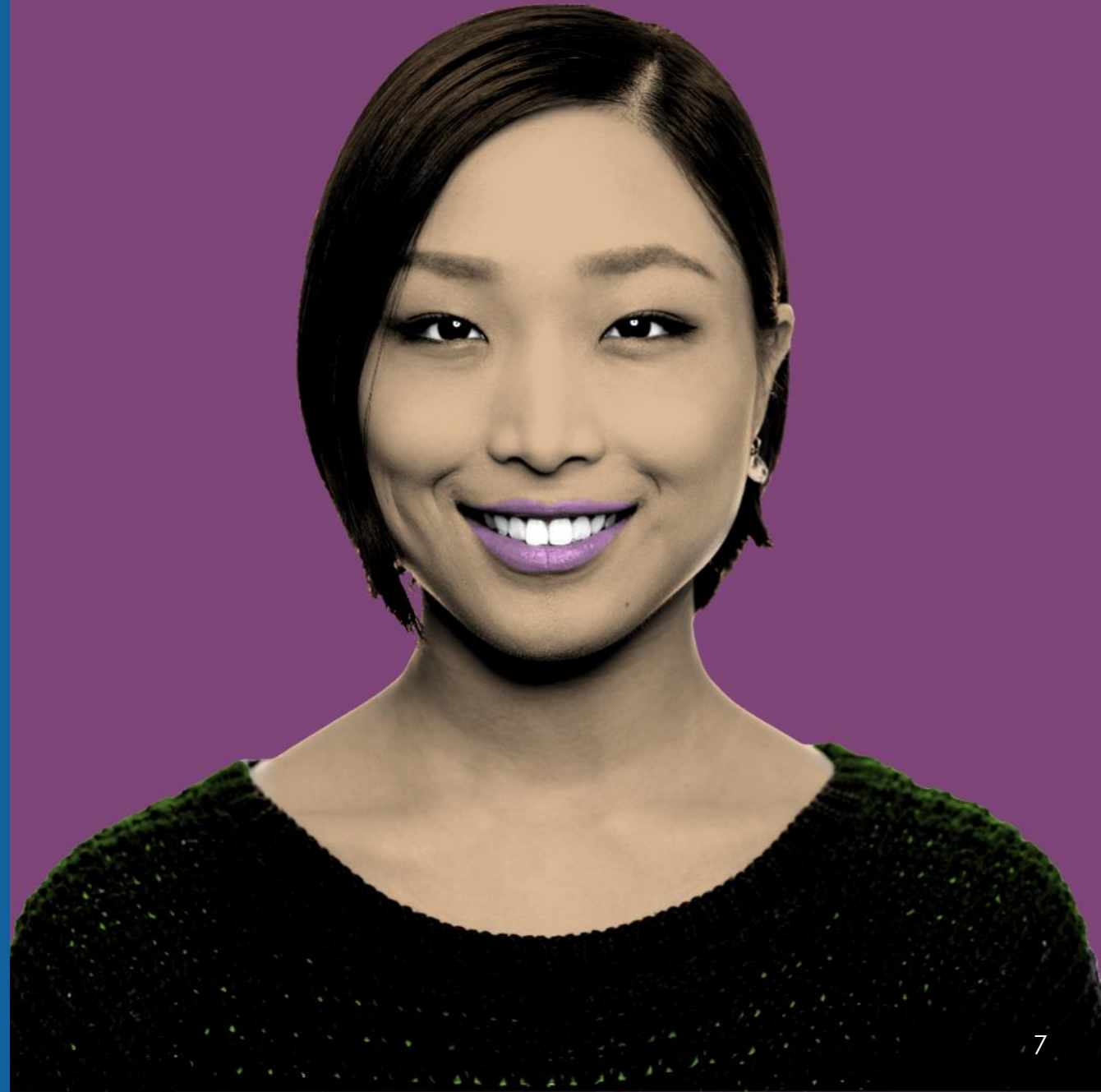
INTRODUCTIONS

Please introduce yourself with:

- Your name
- Your role (e.g., organization, unit)
- What kind of PPE do you wear at work?



Let's talk about
how we would
define PPE.



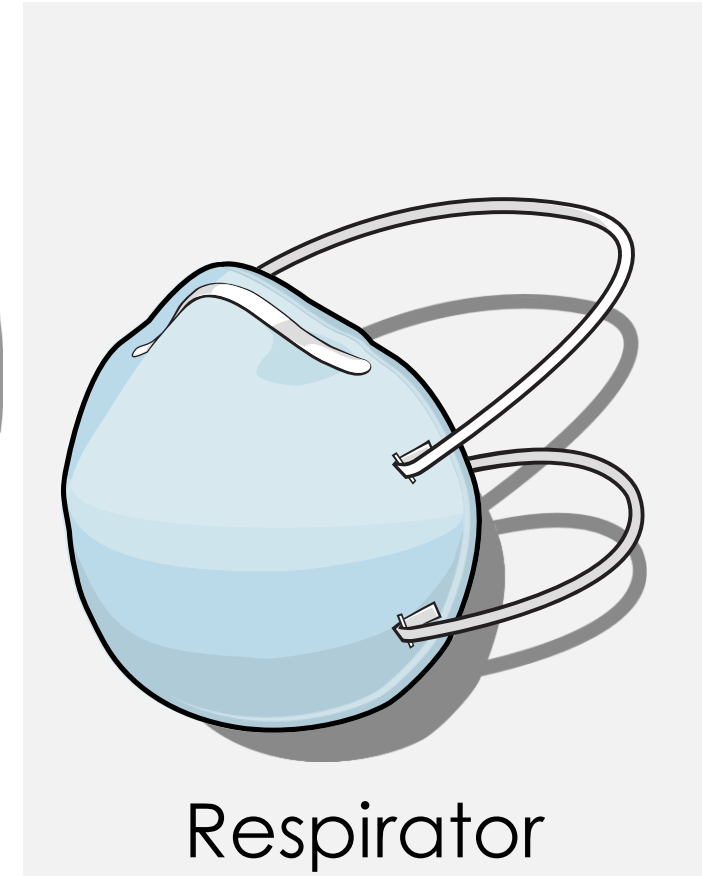
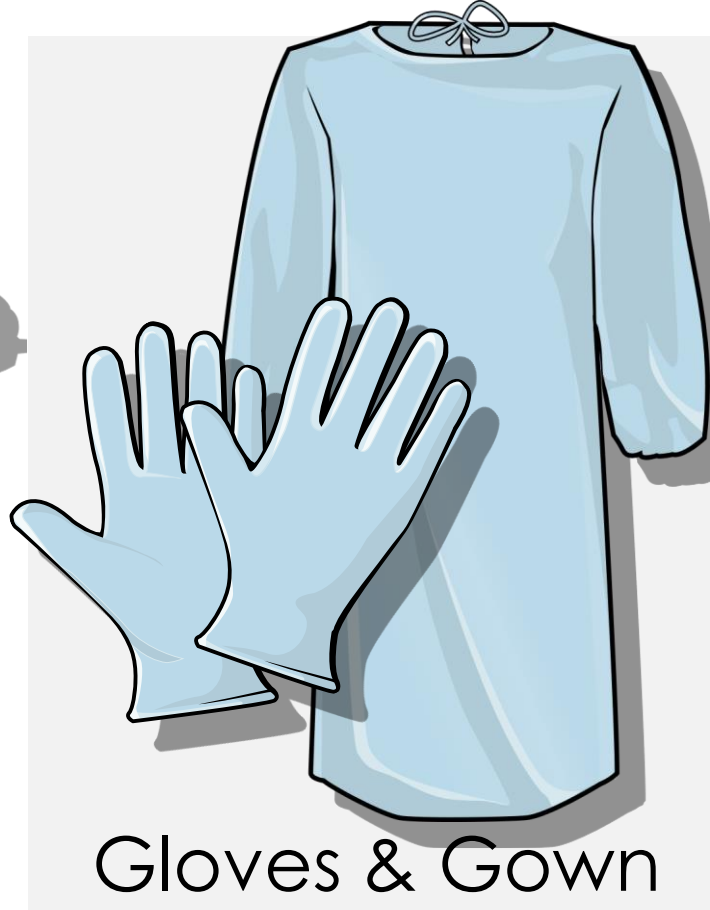
HOW DOES PPE WORK?

1. PPE protects YOU from things in the environment.
2. PPE protects OTHERS from germs you might be carrying.

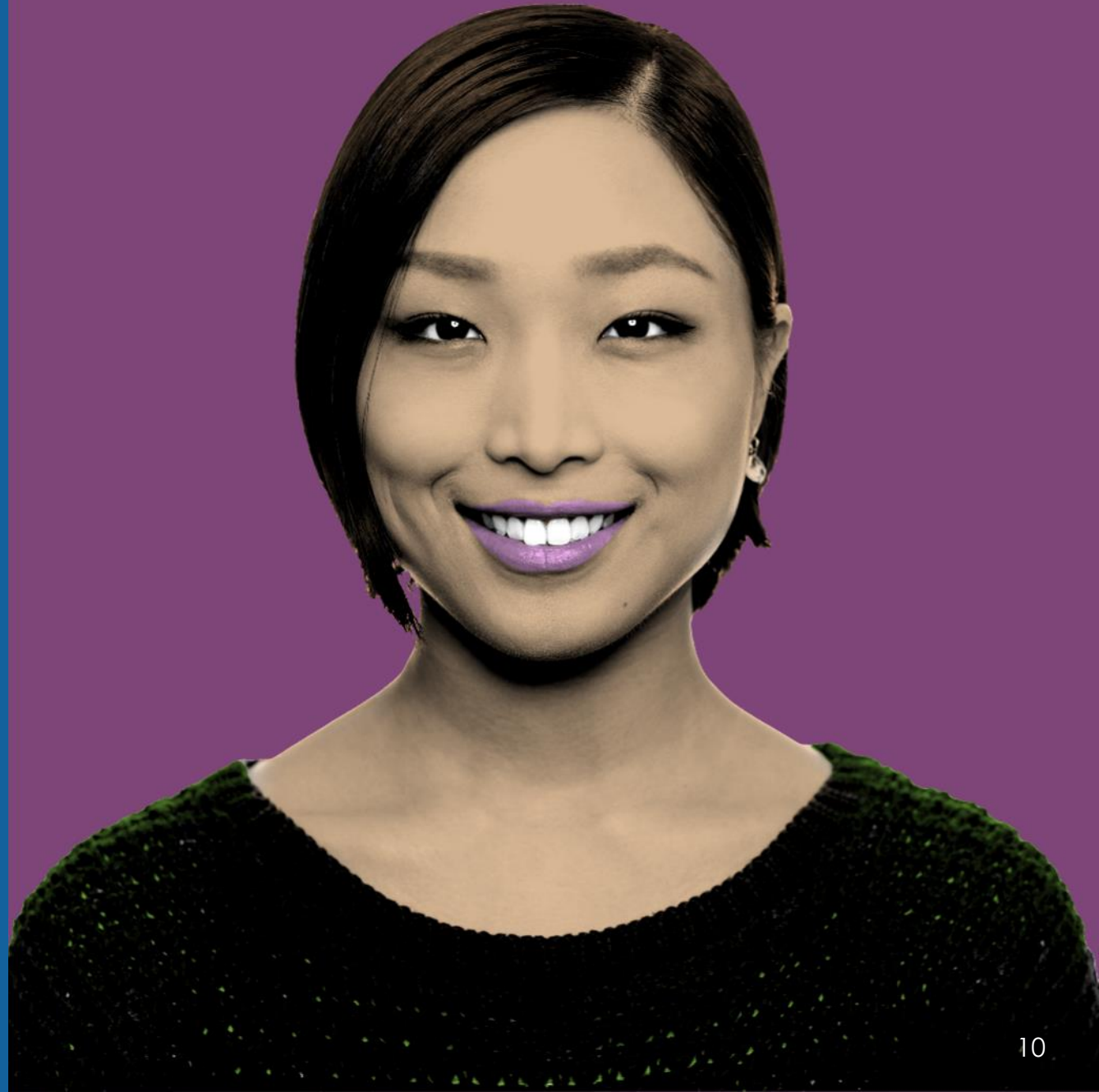
For PPE to work, it must be worn correctly every time.



RECOMMENDED PPE FOR COVID-19



Why is **eye protection** important for COVID-19?



INSIDE INFECTION CONTROL

WHY IS EYE PROTECTION RECOMMENDED FOR COVID-19?

EPISODE 10



WHY IS EYE PROTECTION RECOMMENDED FOR COVID-19?

- In addition to getting in the nose and mouth, or being inhaled, the virus can get into the nose and throat through the tear ducts and cause infection.
- Respiratory droplets that can carry virus can land on your eyes and travel from your eyes to reach the “target zones” of the nose, mouth, back of the throat, and lungs.
- Some viruses can also infect cells in the eye directly.

PPE that is used to protect the eyes should allow you to see clearly and do your work safely.

DISCUSSION

Using eye protection at your workplace

1. How is eye protection used at your workplace?
2. What are the pros and cons to wearing eye protection?
3. Does your facility have a place to clean/disinfect eye protection?



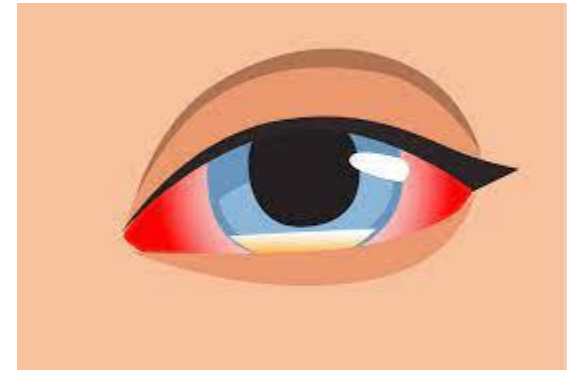
Reflection

What **questions** do you still have?



KEY TAKEAWAYS

- PPE is used in healthcare is to **protect YOU** and to **protect OTHERS**.
- Eye protection is recommended for COVID-19 because the **virus can enter the body through the eyes**.
- Whatever PPE is used to protect your eyes should allow you to **see clearly and do your work safely**.



RESOURCES

Project Firstline on CDC:

<https://www.cdc.gov/infectioncontrol/projectfirstline/index.html>

Project Firstline on Facebook:

<https://www.facebook.com/CDCProjectFirstline/>

Twitter:

https://twitter.com/CDC_Firstline

Youtube:

<https://www.youtube.com/playlist?list=PLvrp9iOILTQZQGtDnSDGViKDdRtlc13VX>

[Respiratory Syncytial Virus \(RSV\) Infection Rate in Personnel Caring for Children With RSV Infections: Routine Isolation Procedure vs Routine Procedure Supplemented by Use of Masks and Goggles | JAMA Pediatrics | JAMA Network](#)

[The Use of Eye-Nose Goggles to Control Nosocomial Respiratory Syncytial Virus Infection | JAMA | JAMA Network](#)

EVALUATION

Take the end of course evaluation for CEU certificate:

https://ndhealth.co1.qualtrics.com/jfe/form/SV_3edRQKNj6DmVHla

If you are a room moderator for a group in attendance, fill out the Group Attendance Form. EACH attendee will need to complete the evaluation form. Submit all forms to dohpfl@nd.gov for certificates.

Recordings can be found on:

www.health.nd.gov/projectfirstline



Questions? Email us: dohpfl@nd.gov

Call us: (701)-328-2378