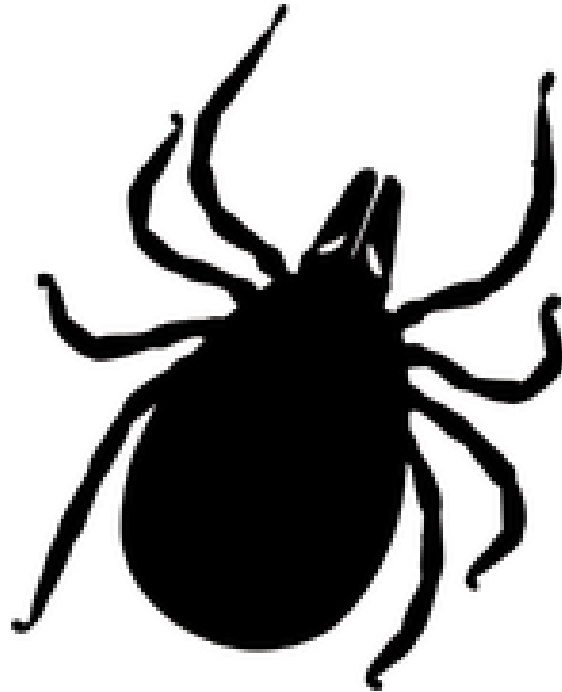


North Dakota Tick Surveillance Program Annual Report



2019

North Dakota Department of Health
Division of Laboratory Services
2635 East Main Avenue
Bismarck, North Dakota 58506-5520





Collaborators

Margaret Kuklok & Kristi Bullinger
Tick Surveillance Program Coordinators

Kristi Bullinger
Tick Surveillance Report Author

Derrick Frieson
Tick Surveillance Report Coauthor

Micah Zimmerman
Summer Tick Analyst

Robyn Dettenhefner
Summer Tick Analyst

Jenna Dettenhefner
Summer Tick Analyst

Kristie Schwarzkopf
Arbovirus Program Manager

North Dakota Department of Health
Division of Laboratory Services
2635 East Main Avenue
Bismarck, North Dakota 58506-5520

**2019 North Dakota Tick
Surveillance Program's Mission**

Through tick collection and speciation, the North Dakota Department of Health (NDDoH) monitors the risk of infection from tickborne pathogens known to exist in this region. The North Dakota Tick Surveillance Team focuses on *Dermacentor variabilis* and *Ixodes scapularis* for pathogen identification.

Table of Contents

North Dakota Tick Surveillance Background	4
Veterinarians and Zoos	
Submitting Veterinarians, Zoos, Game and Fish, and Wildlife Services	5
2019 Tick Surveillance Sites and Regions	6
2019 Tick Submissions by Week	8
2019 Total Tick Submissions	9
2019 Tick Submission Breakdown by Region	10
2019 Tick Submissions by Region	12
Tickborne Pathogen and Disease Information	
Anaplasmosis	16
Babesiosis	16
Bartonella	17
Colorado Tick Fever	17
Ehrlichiosis	17
Lyme Disease	18
Powassan Virus Disease	18
Rocky Mountain Spotted Fever	19
<i>Rickettsia parkeri</i> Rickettsiosis	19
Tularemia	20
Tick Images	20
Tick Life Cycle and Ticks in North Dakota	
21	
Life Cycle Images	24
PCR Results	24
Tick PCR Pool Results by Region	26
Tick Drags and Email Submissions	30
2019 Submission Dates	31
References	32

North Dakota Tick Surveillance Program Background

In 2017, the North Dakota Department of Health (NDDoH) started a tick surveillance program. Twenty-eight veterinarians and zoos were contacted from around the state and asked to collect ticks and submit them to NDDoH for identification and testing. Tick season ran from April 1 until July 1. Additional submissions were received through the month of October. In 2018, the tick surveillance program expanded to include thirty-seven veterinarians and zoos as well as seven Game and Fish and sixteen Wildlife Service sites. We also had one active surveillance submitter from Grassy Butte.

In 2019 the tick collection season ran from April 1st to December 1st. In May, five tick drags were performed by Department of Health employees and as a result 89 *Dermacentor* ticks were collected and tested. In 2019 the tick surveillance program introduced ND Tick Email submissions, NDTicks@ND.gov. Through this email service, anybody can easily submit images of ticks they have found for identification. Additionally, any ticks submitted through email can also be submitted through the mail if the tick is of interest to the Department of Health. Of the 34 email submissions received, five ticks were identified as *Ixodes* and four ticks were identified as Lone star ticks. In 2019, the tick surveillance program expanded to include thirty-nine veterinarians and zoos as well as seven Game and Fish and sixteen Wildlife Service sites. We also maintained one active surveillance submitter from Grassy Butte.

Submitting Veterinarians, Zoos, Game and Fish, and Wildlife Services

ID Code	Vet Name	Town	County
APH	All Pets Hospital	Grand Forks	Grand Forks
APVC	All Pets Veterinary Clinic	Bismarck	Burleigh
AVC	Ashley Vet Clinic	Ashley	McIntosh
BMVS	Bakken Mobile Veterinary Services	Williston	Williams
BEVC	Beach Veterinary Clinic	Beach	Golden Valley
BVC	Bowman Veterinary Clinic	Bowman	Bowman
CV	Casselton Veterinary	Casselton	Cass
CVF	Casselton Veterinary Fargo	Fargo	Cass
CZ	Chahinkapa Zoo	Wahpeton	Richland
DAC	Dakota Animal Care	Edinburg	Walsh
DPVS	Dakota Prairie Veterinary Service	New Town	Mountrail
DVH	Dakota Veterinary Hospital	Wahpeton	Richland
DZ	Dakota Zoo	Bismarck	Burleigh
DDPT	Dr. Dawn's Pet Stop	Jamestown	Stutsman
EVS	Elgin Veterinary Service	Elgin	Grant
ENVC	Enderlin Veterinary Clinic	Enderlin	Cass
GVS	Gibbens Veterinary Service	Cando	Towner
GVVC	Golden Valley Vet Clinic	Park River	Walsh
HRAH	Heart River Animal Hospital	Mandan	Morton
KRVC	Knife River Veterinary Clinic	Beulah	Mercer
LCAH	Lewis and Clark Animal Hospital	Bismarck	Burleigh
OaVS	Oakes Veterinary Service	Oakes	Dickey
OVS	Olson Veterinary Services	Esmond	Benson
PAC	Petcetera Animal Clinic	Grand Forks	Grand Forks
PRVH	Prairie Veterinary Hospital	Jamestown	Stutsman
RBVS	Red Barn Veterinary Service	Sheldon	Ransom
RRZ	Red River Zoo	Fargo	Cass
RPZ	Roosevelt Park Zoo	Minot	Ward
RVS	Rugby Veterinary Service	Rugby	Pierce
SAV	State Ave Vet	Dickinson	Stark
SHAH	Sheridan Animal Hospital	Harvey	Wells
SVVS	Sheyenne Valley Veterinary Service	Milnor	Sargent
SGVH	Southgate Veterinary Hospital	Fargo	Cass

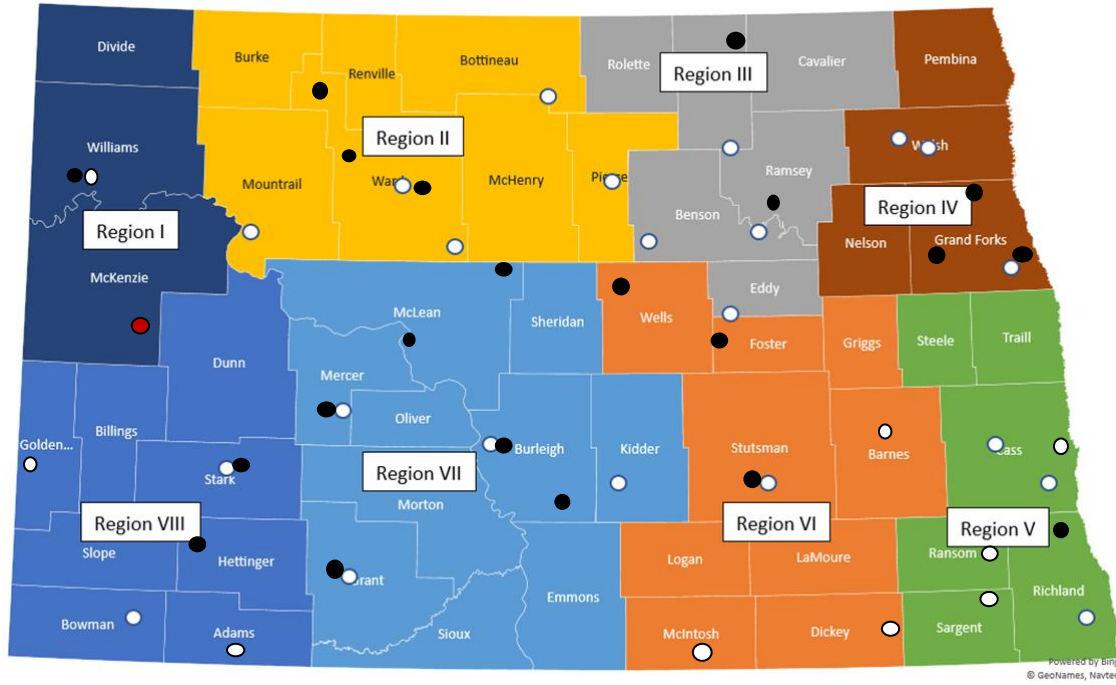
SVC	Steele Veterinary Clinic	Steele	Kidder
TPV	The Pet Vet	Sawyer	Ward
TCVC	Town and Country Vet Clinic	New Rockford	Eddy
TMVS	Turtle Mountain Veterinary Services	Bottineau	Bottineau
VCVH	Valley City Veterinary Hospital	Valley City	Barnes
WDVC	West Dakota Veterinary Clinic	Dickinson	Stark
WOAH	West Oaks Animal Hospital	Minot	Ward
WVC	Western Veterinary Clinic	Williston	Williams
WRV	West River Veterinary Clinic	Hettinger	Adams

GFB	Game and Fish- Bismarck	Bismarck	Burleigh
GFDL	Game and Fish- Devils Lake	Devils Lake	Ramsey
GFDI	Game and Fish- Dickinson	Dickinson	Stark
GFLW	Game and Fish- Lonetree WMA	Harvey	Wells
GFR	Game and Fish- Riverdale	Riverdale	McLean
GFJ	Game and Fish- Jamestown	Jamestown	Stutsman
GFWI	Game and Fish- Williston	Williston	Williams
WSWJ	Wildlife Services Walcott- Joel	Walcott	Richland
WSNEB	Wildlife Services New England- Brent	New England	Hettinger
WSBM	Wildlife Services Berthold- Mark	Berthold	Ward
WSBIW	Wildlife Services Bismarck-Wade	Bismarck	Burleigh
WSLN	Wildlife Services Larimore-Nat	Larimore	Grand Forks
WSBK	Wildlife Services Beulah- Kirby	Beulah	Mercer
WSJR	Wildlife Services Jamestown- Rodney	Jamestown	Stutsman
WSMJ	Wildlife Services Moffit- Jeremy	Moffit	Burleigh
WSTA	Wildlife Services Towner- Aaron	Towner	McHenry
WSKT	Wildlife Services Kenmare- Tyler	Kenmare	Ward
WSEM	Wildlife Services Elgin- Mike	Elgin	Grant
WSBR	Wildlife Services Butte- Rick	Butte	McLean
WSID	Wildlife Services Inkster- Dean	Inkster	Grand Forks
WSMN	Wildlife Services Minot- Nick	Minot	Ward
WSCC	Wildlife Services Carrington- Cody	Carrington	Foster
WSGFJ	Wildlife Services Grand Forks- Joshua	Grand Forks	Grand Forks

GBJ	John Heiser	Grassy Butte	McKenzie
-----	-------------	--------------	----------

2019 Tick Surveillance Sites

○ Veterinarians and Zoos ● Game and Fish/Wildlife Services ● Active Surveillance



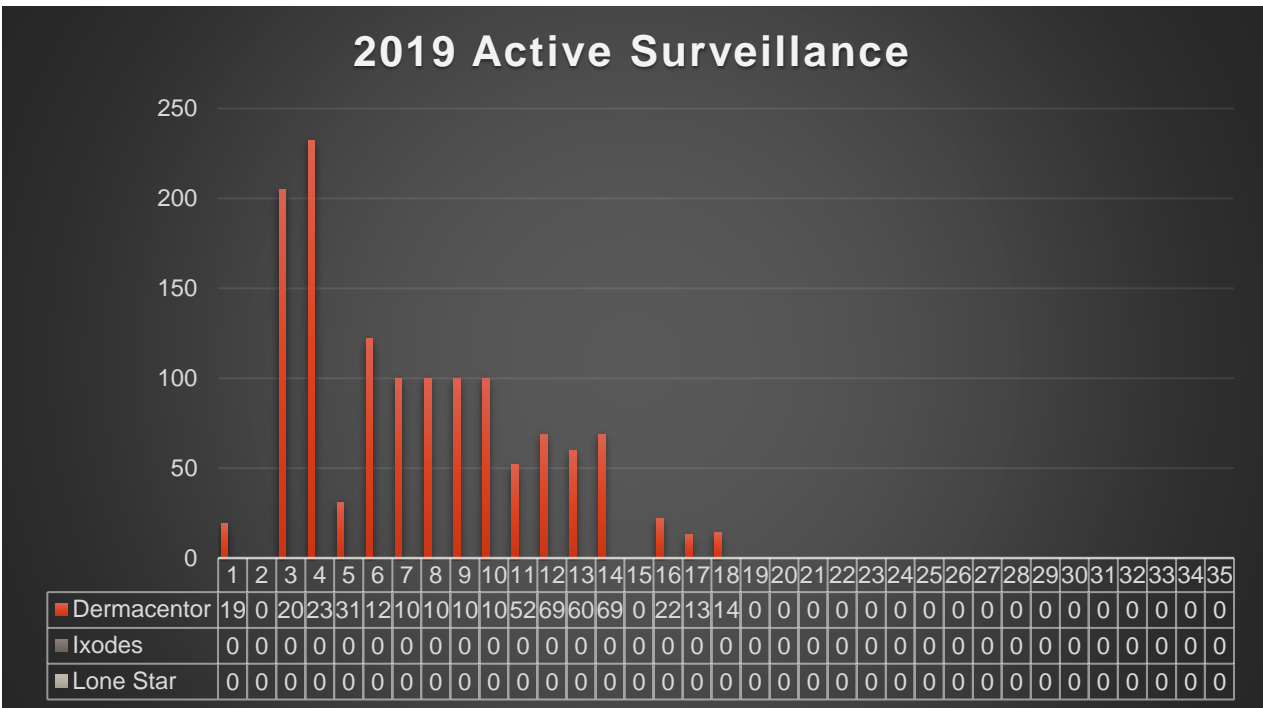
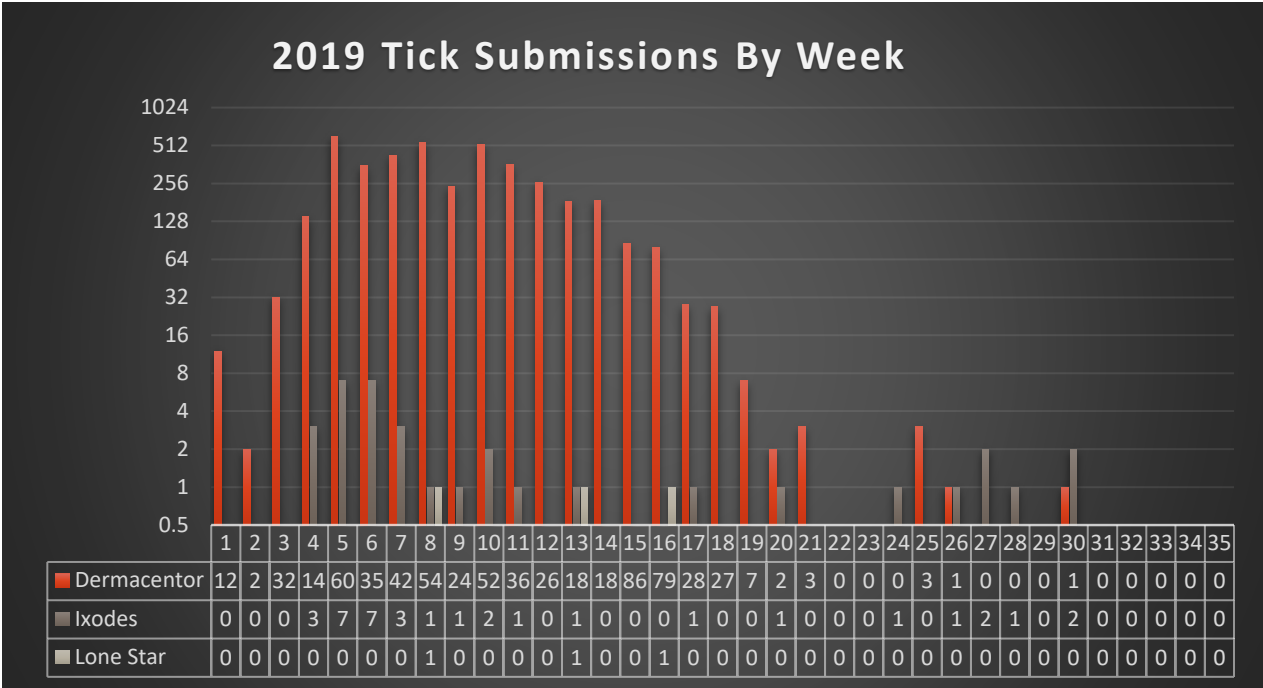
○

The Following Counties Are Included in Each Region:

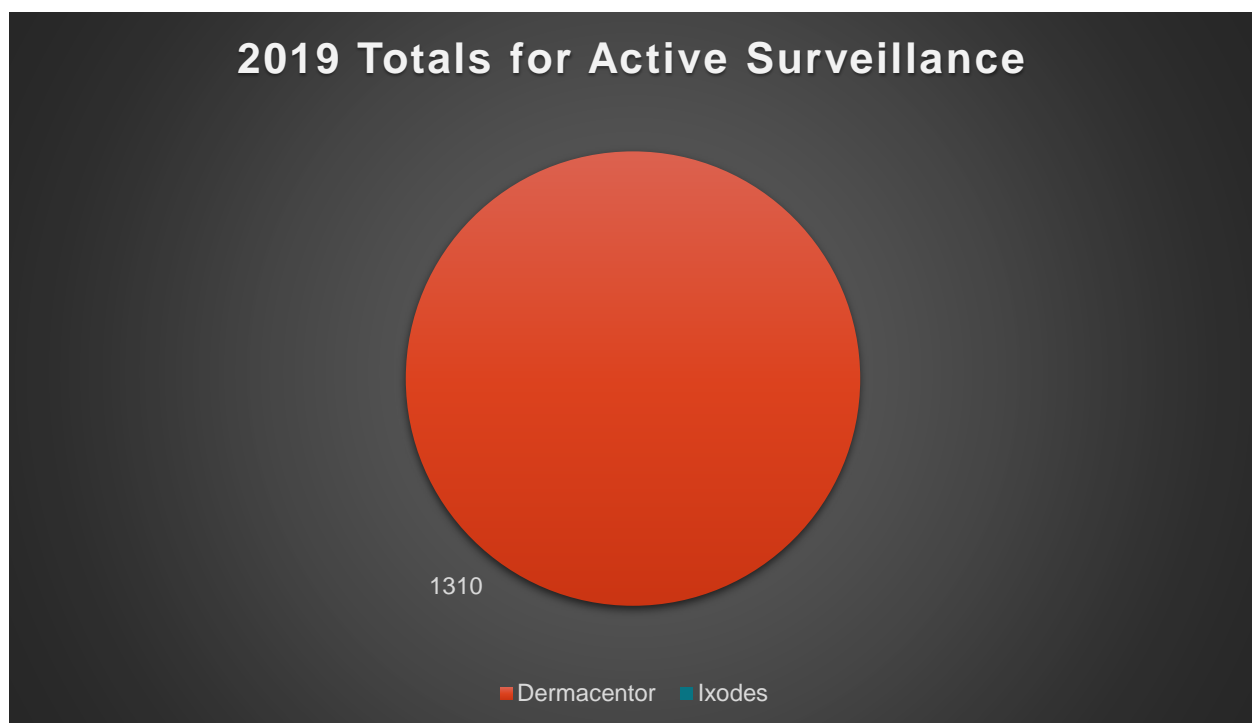
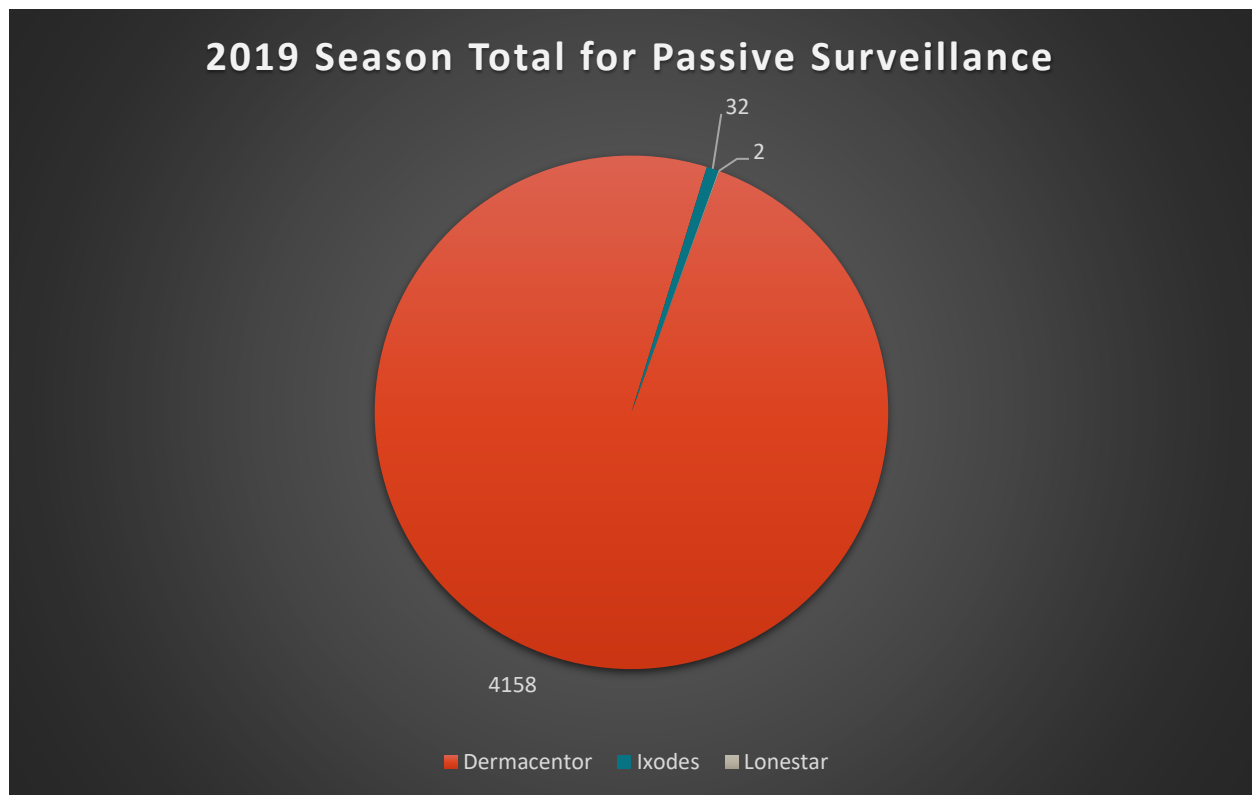
Region	Counties
I	Divide, Williams, McKenzie
II	Burke, Renville, Bottineau, Mountrail, Ward, McHenry, Pierce
III	Rolette, Towner, Cavalier, Ramsey, Benson, Eddy
IV	Pembina, Walsh, Nelson, Grand Forks
V	Steele, Traill, Cass, Ransom, Sargent, Richland
VI	Wells, Foster, Griggs, Stutsman, Barnes, Logan, LaMoure, McIntosh, Dickey
VII	McLean, Sheridan, Mercer, Oliver, Burleigh, Kidder, Morton, Grant, Sioux, Emmons
VIII	Golden Valley, Billings, Stark, Hettinger, Bowman, Adams, Slope

VIII	Dunn, Golden Valley, Billings, Stark, Slope, Hettinger, Bowman, Adams
------	--

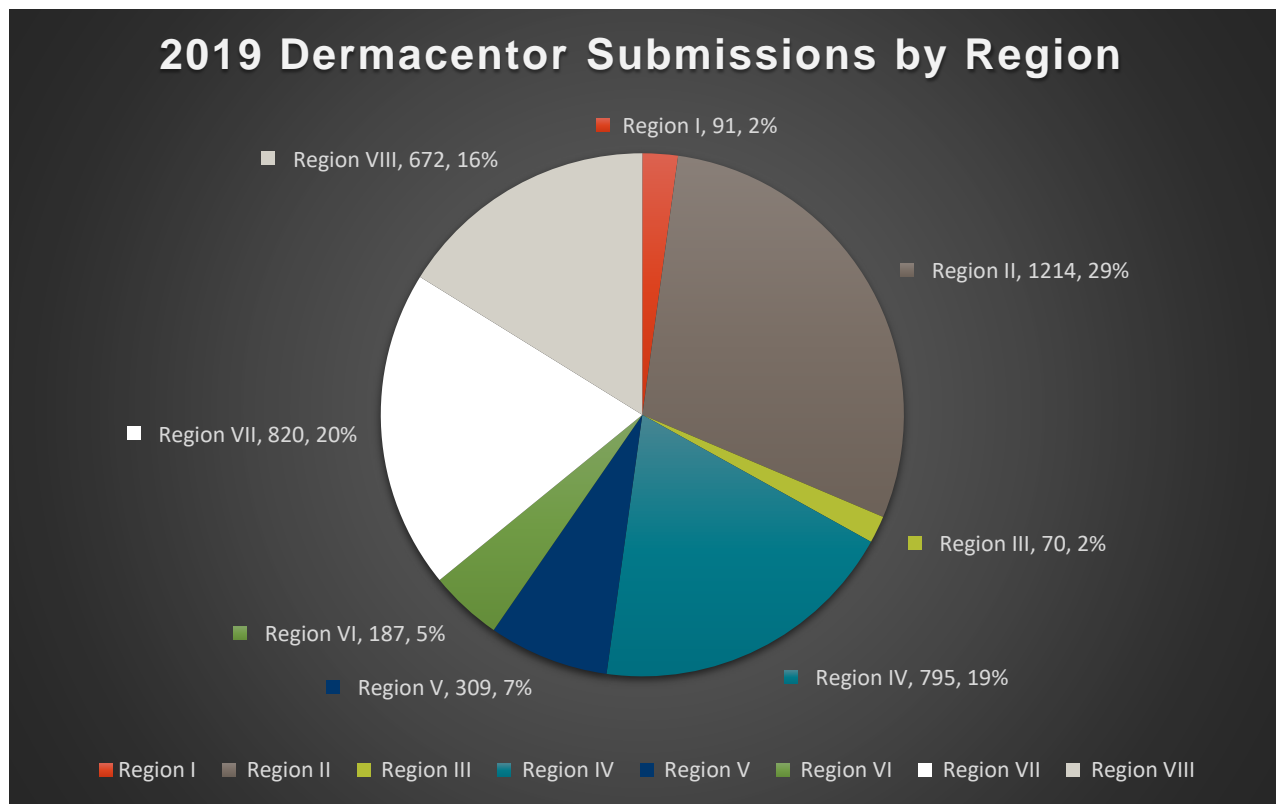
Tick Submissions by Week



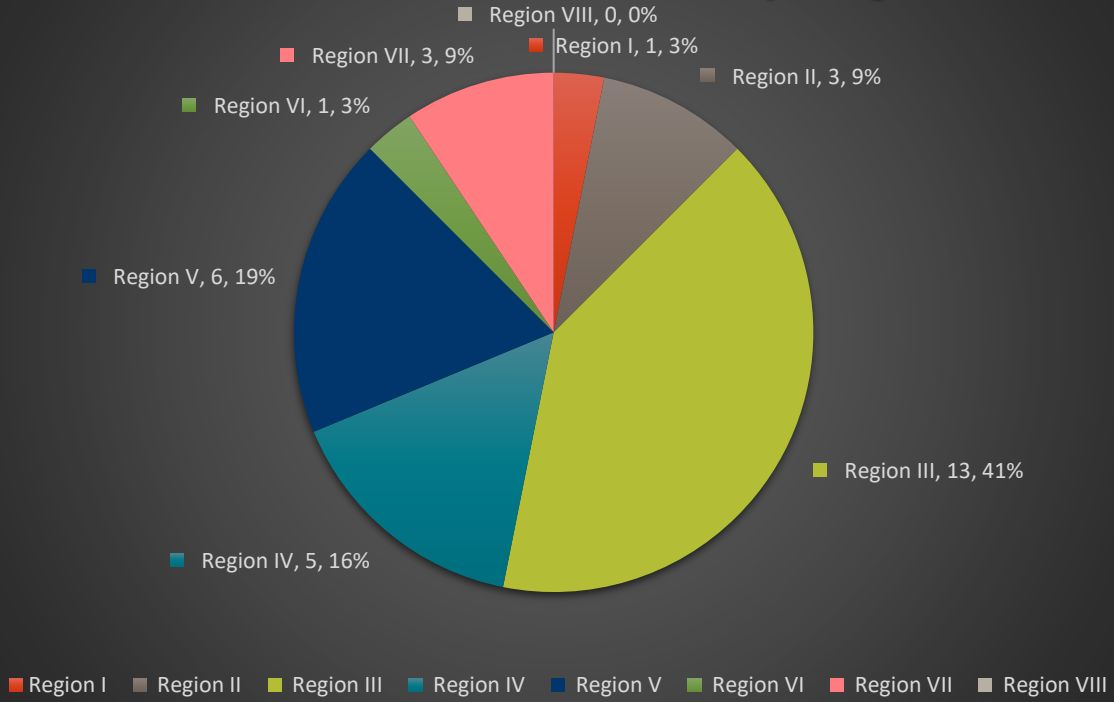
Tick Submission Season Totals



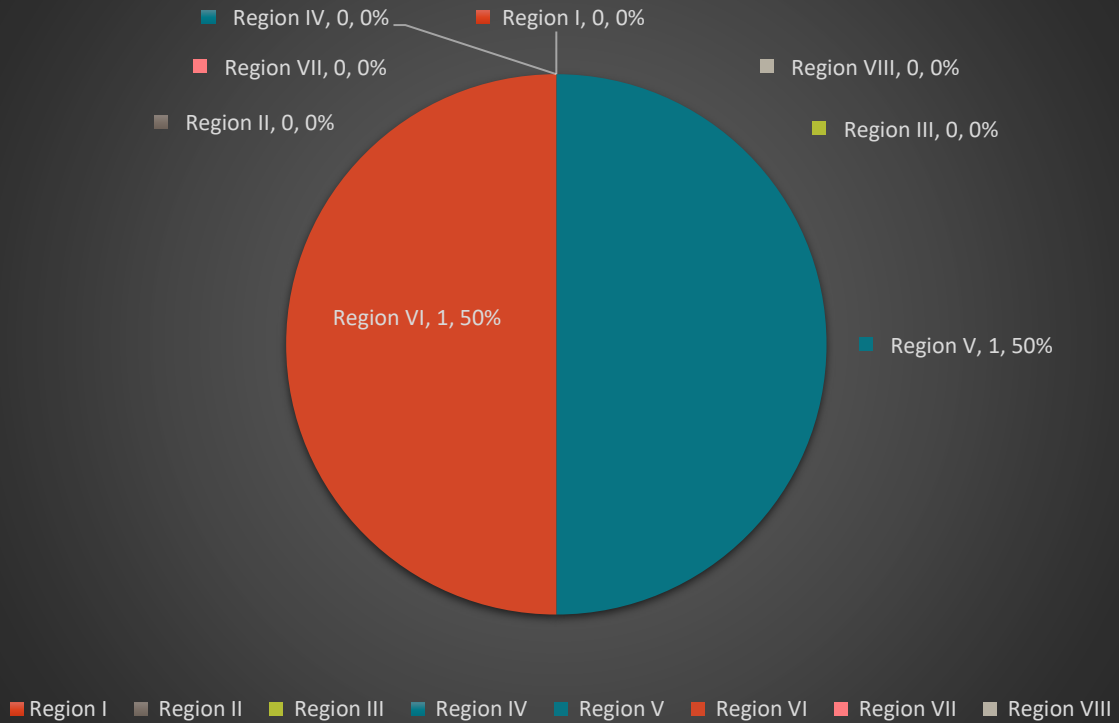
Tick Submission Breakdown by Region



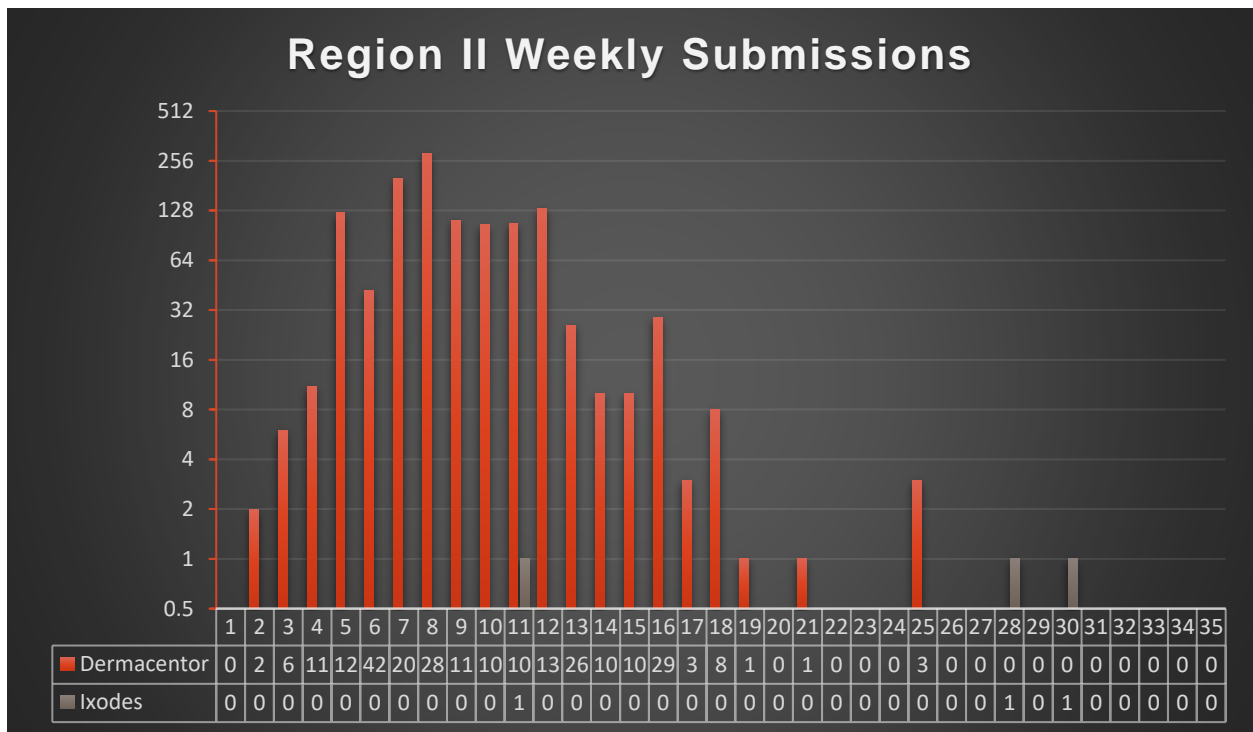
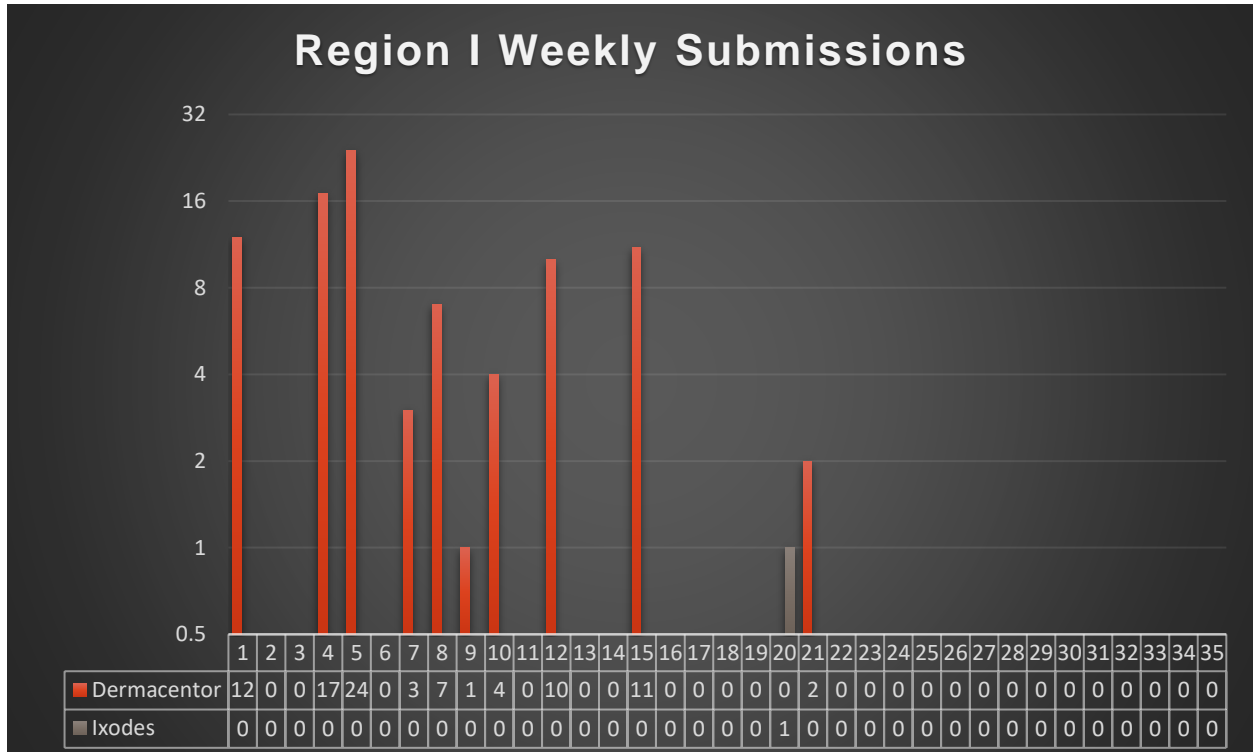
2019 Ixodes Submissions by Region



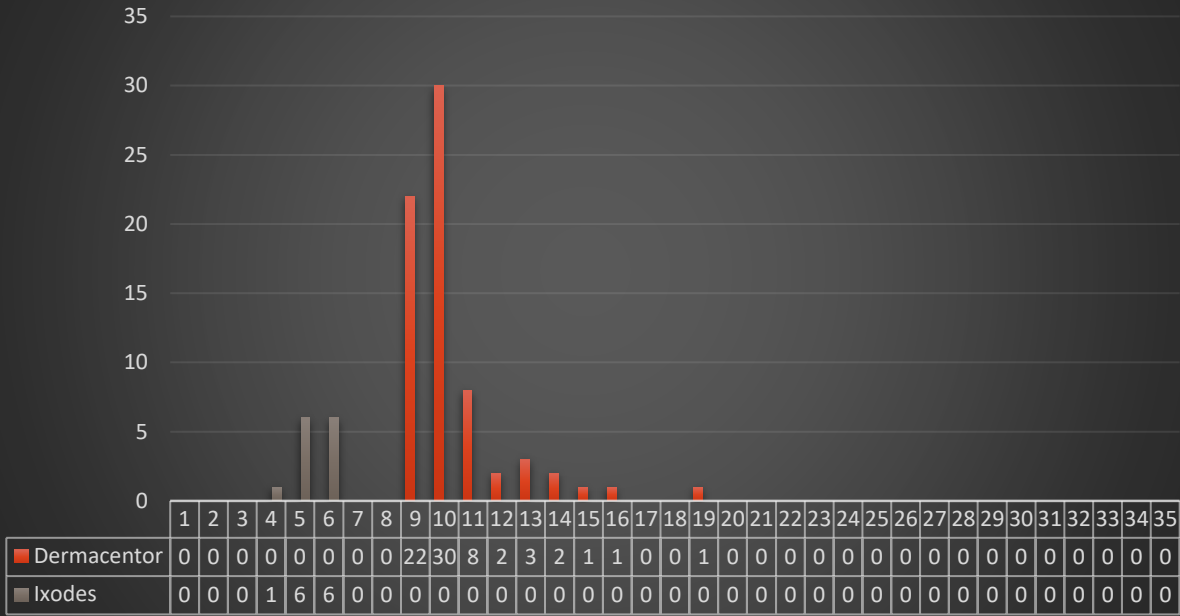
2019 Lone Star Submissions by Region



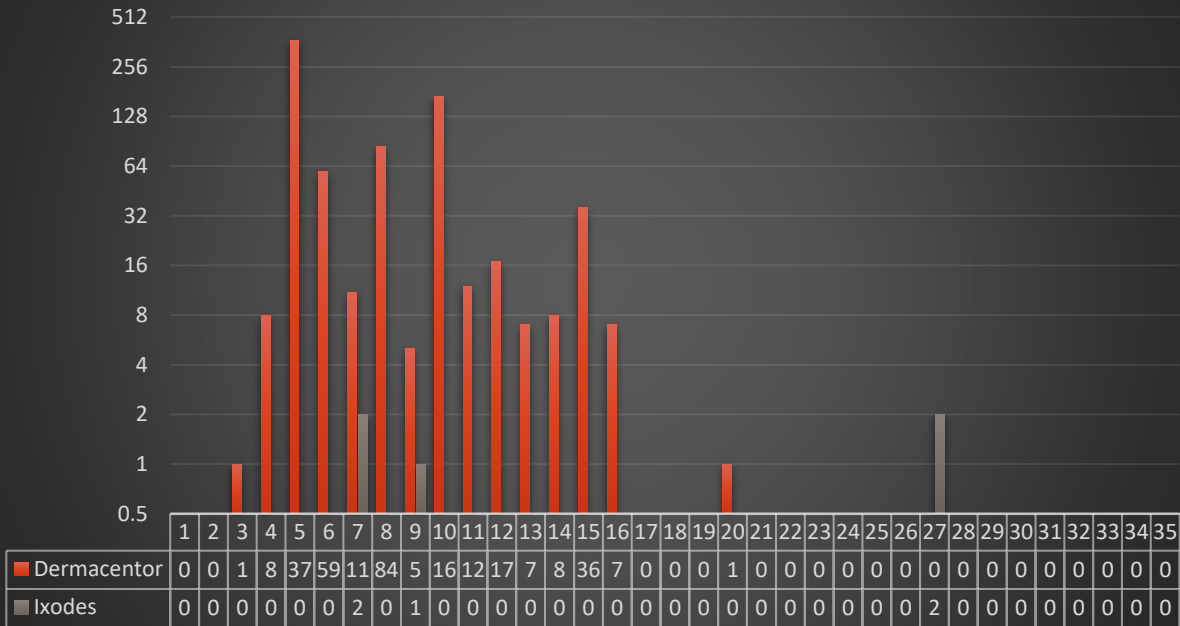
Tick Submission by Region



Region III Weekly Submissions



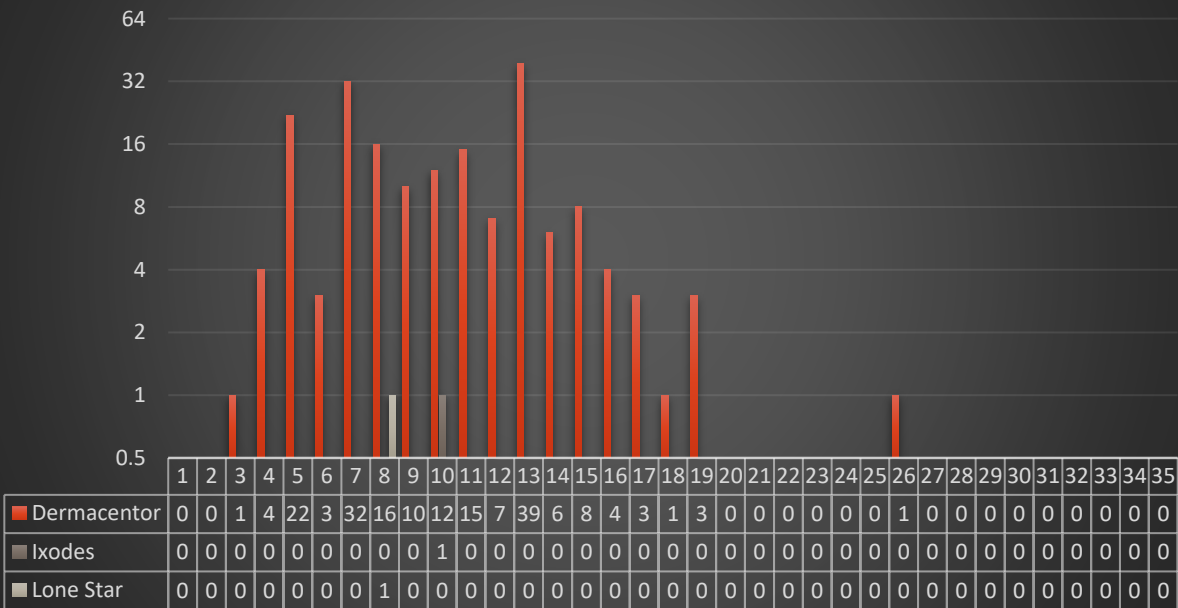
Region IV Weekly Submissions



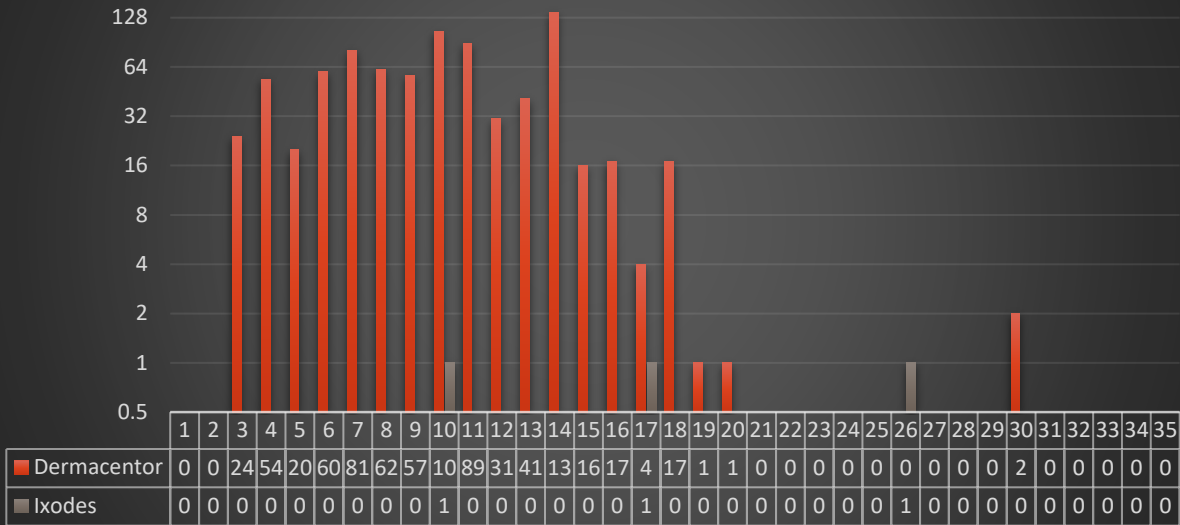
Region V Weekly Submissions



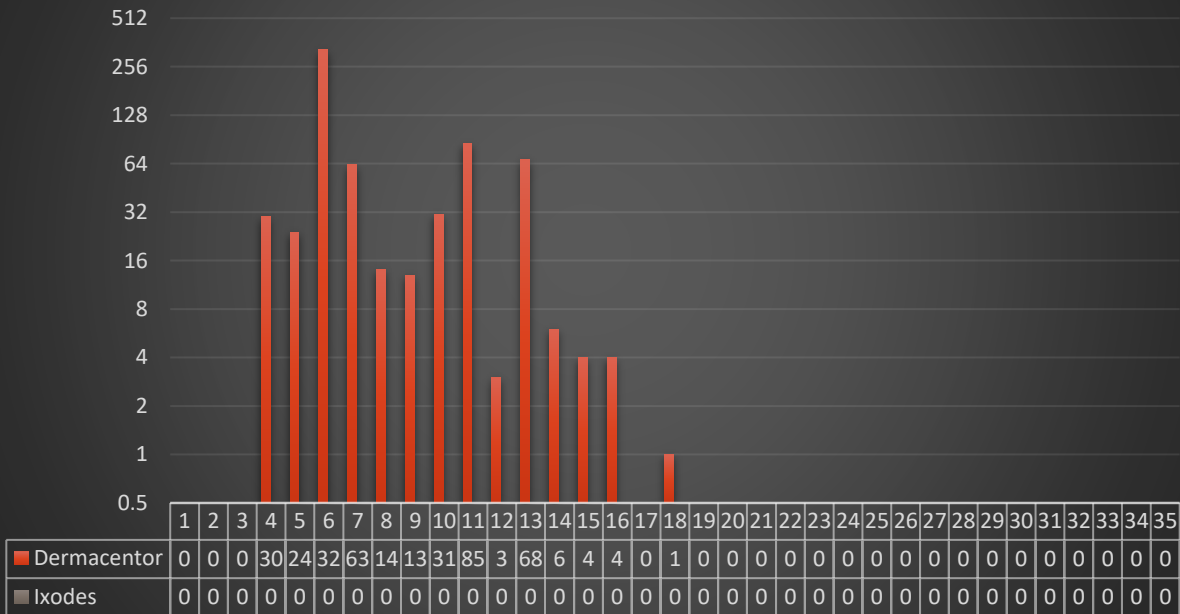
Region VI Weekly Submissions



Region VII Weekly Submissions



Region VIII Weekly Submissions



Tickborne Pathogen and Disease Information

Anaplasmosis

Anaplasmosis is caused by the organism *Anaplasma phagocytophilum*. The tick that transmits *A. phagocytophilum* in the upper Midwestern United States is *Ixodes scapularis*, commonly known as the deer tick. In the past, *A. phagocytophilum* was known as *Ehrlichia equi* and *Ehrlichia phagocytophilum* and had been said to cause human granulocytic ehrlichiosis (HGE). In 2001, due to a taxonomic change, the organism was changed to *Anaplasma*, resulting in a name change for the disease to anaplasmosis. Symptoms of anaplasmosis begin to occur within 1-2 weeks from the time of the tick bite. These symptoms include fever, headache, malaise, muscle aches, chills, nausea, abdominal pain, cough, confusion, and rarely rash (rashes are more common in Rocky Mountain spotted fever and Lyme disease). Severe cases may present with difficulty breathing, hemorrhage, renal failure or neurological involvement. Fatalities occur in less than 1 percent of cases. *A. phagocytophilum* infects the white blood cells of the patients and has been known to survive up to a week in refrigerated blood, posing a risk when it comes to blood transfusions. Diagnosis of *A. phagocytophilum* can prove to be difficult, as testing for the organism may be negative for the first 7-10 days. Presence of morulae, which are microcolonies of *Anaplasma* seen in the cytoplasm of the white blood cells, can be seen in up to 20 percent of patients. Doctors must use their judgment to begin treatment when testing is negative but clinical suspicion and history indicate anaplasmosis. Doxycycline is the antibiotic of choice for patients of all ages. Anaplasmosis was not reportable in North Dakota until 2011. From 2011 to 2017, 50 cases were reported to the NDDoH; 17 of those were reported in 2017.

Babesiosis

Babesiosis is a tickborne illness caused by *Babesia* spp., which are microscopic parasites. *Babesia microti* causes most human cases of babesiosis in the United States. The vector for *B. microti* is the deer tick (*I. scapularis*). Many patients with babesiosis do not exhibit any signs or symptoms. Others may exhibit non-specific flu-like symptoms, such as fever, chills, sweats, headache, body aches, loss of appetite, nausea, or fatigue. *Babesia* specifically target red blood cells, which may lead to hemolytic anemia. People without a spleen, the elderly, and those who are immunocompromised or have underlying health conditions are at higher risk for severe and potentially life-threatening complications. Severe complications include low and unstable blood pressure, thrombocytopenia, hemolytic anemia, disseminated intravascular coagulation (DIC), multiple organ failure, and death. Asymptomatic patients do not require treatment. Before beginning treatment, it is recommended that a proper diagnosis be made and then treatment options should be discussed with the physician. Babesiosis is usually diagnosed by examining blood smears under a microscope for *Babesia* parasites within red blood cells. Babesiosis became reportable in North Dakota in 2011. Six cases of

babesiosis were reported to the NDDoH from 2011 to 2017. There were no cases reported in 2017.

Bartonella

The genus *Bartonella* has many species associated with human infections. *Bartonella* ssp. DNA has been detected in ticks, specifically the deer tick (*I. scapularis*); however, there is no evidence that the ticks are able to transmit *Bartonella* to humans. Most likely, human infection with *Bartonella* has come from another source, such as fleas or sandflies. The most common *Bartonella* infection in the United States, cat scratch disease or cat scratch fever, is caused by *B. henselae*. The common cat flea is the vector for *B. henselae*. *B. quintana*, the causative agent of Trench fever, is spread by body lice. *Bartonella* infections are not reportable in North Dakota.

Colorado Tick Fever

Colorado Tick Fever (CTF) is an RNA virus from the genus *Coltivirus*. It is transmitted by the *Dermacentor andersoni*, or the Rocky Mountain wood tick. Typical animal reservoirs for the Rocky Mountain wood tick include small rodents such as squirrels, chipmunks and mice. The virus is not transmitted from person to person, with the rare exception of a blood transfusion. The CTF virus can remain in the red blood cells for many months, and blood and bone marrow donations should not be made for 6 months after an infection. Symptoms can appear from <1 day to 14 days post tick exposure, with an average onset of 4 days post exposure. Symptoms of CTF include fever, chills, headache, body aches, malaise, occasional sore throat, vomiting, abdominal pain, or skin rash. Half of patients have “biphasic” fever. These patients will have several days of fever, feel better for several days, and then have a short period of fever and illness. This disease is self-limiting, and most patients will exhibit mild symptoms and fully recover, the weakness and fatigue can last several weeks. Death from CTF virus is rare. There is no treatment available for CTF virus. If the CTF illness is severe enough, hospitalization may be required in which intravenous fluids and medications to treat symptoms will then be administered. Hospitalizations occur mostly among children.

Ehrlichiosis

The three bacterial species known to cause ehrlichiosis are *Ehrlichia chaffeensis*, *Ehrlichia ewingii* and *Ehrlichia muris*-like (EML). The vector associated with *E. chaffeensis* and *E. ewingii* is the lone star tick (*A. americanum*). The deer tick (*I. scapularis*) is a possible vector for EML. EML infections have only been seen in patients who live in or have traveled to Minnesota and Wisconsin. Symptoms of ehrlichiosis typically develop within 1 to 2 weeks after the bite of an infected tick. A wide range of non-specific symptoms present with varying combinations among patients, and may include fever, headache, chills, malaise, muscle and joint pain, nausea, vomiting, diarrhea, confusion, and conjunctival injection (red eyes). Skin rash may be seen in up to 60 percent of children and less than 30 percent of adults. Left untreated, ehrlichiosis may progress to severe illness or death. *Ehrlichia* bacteria infect white blood cells and

can survive in refrigerated blood for more than a week, which theoretically poses a risk for being transmitted through blood transfusions. Diagnosis of ehrlichiosis may be difficult, as antibodies may not be detectable for the first 7 to 10 days of illness in 85 percent of patients. Presence of morulae, which are microcolonies of *Ehrlichia* seen in the cytoplasm of the white blood cells, can be seen in up to 20 percent of patients. The patient may exhibit thrombocytopenia, leukopenia, or elevated liver enzymes. The diagnosis of ehrlichiosis must be made based on clinical signs and symptoms and can later be confirmed using specialized confirmatory laboratory tests. Treatment should never be delayed pending the receipt of test results or be withheld based on an initial negative result. Doxycycline is the antibiotic of choice for patients of all ages. Ehrlichiosis became a reportable disease in North Dakota in 2011. Fifteen cases were reported to the NDDoH from 2011 to 2017; four of these cases were reported in 2017.

Lyme Disease

Lyme disease is caused by the bacterium *Borrelia burgdorferi* and is spread by the deer tick (*I. scapularis*). In most cases, the tick must be attached for 36-48 hours or longer before *B. burgdorferi* can be transmitted. For this reason, most humans are infected through the bites of nymphs. Nymphs, which are immature ticks, are less than 2 mm in size and are difficult to see. Adult ticks can also transmit *B. burgdorferi*; however, due to their larger size, they are often discovered and removed before they can transmit the bacteria. Symptoms of Lyme disease can be broken down into early signs and symptoms, which occur from 3-30 days after a tick bite, and late signs and symptoms, which occur days to months after a tick bite. Early signs and symptoms may include fever, chills, headache, fatigue, muscle and joint aches, and swollen lymph nodes. One of the most commonly associated indicators of Lyme disease is erythema migrans (EM), also known as the “bull’s-eye” rash. EM occurs in about 70-80 percent of infected people. The rash begins at the site of the tick bite anywhere from 3 to 30 days after the bite has occurred. EM gradually expands over a few days and can reach up to 12 inches across. It may feel warm to the touch but is rarely itchy. Later signs and symptoms of Lyme disease may take months to years to develop and include severe headaches and neck stiffness, joint pain and swelling, especially in the large joints, facial paralysis, intermittent pain in tendons, muscles, joints and bones, heart palpitations or irregular heart beat (Lyme carditis), dizziness, shortness of breath, nerve pain, numbness and tingling in hands or feet, problems with short term memory, and inflammation of the brain and spinal cord. Most patients will recover with a few weeks of oral antibiotics. Treatment with intravenous antibiotics may be required for patients with neurological or cardiac involvement. A small percentage have symptoms that last longer than six months, which is then called Post-treatment Lyme Disease Syndrome. Lyme disease has been reportable in North Dakota since 1988. From 2000 until 2017, 290 cases of Lyme disease were reported to the NDDoH; 56 cases were reported in 2017.

Powassan Virus Disease

Powassan is an RNA virus, which is related to West Nile, St. Louis encephalitis, and tickborne encephalitis virus. In North America, the three common vectors for Powassan virus are *Ixodes cookei*, *Ixodes marxi*, and *Ixodes scapularis*. There are two types of Powassan virus in the United States: 1 POW and 2 POW. 1 POW virus is associated with *I. cookei* or *I. marxi*. 2 POW virus, sometimes called the deer tick virus, is associated with the deer tick (*I. scapularis*). Both 1 POW virus and 2 POW virus have been associated with human disease. It is of interest that *I. cookei* and *I. marxi* ticks rarely bite humans, whereas *I. scapularis* is known to often bite humans. Studies in mice have shown that the *I. scapularis* only needs to be attached for 15 minutes to transmit the virus. The incubation period for Powassan virus is one week to one month. Many people who become infected with Powassan virus are asymptomatic. For those who do develop symptoms, the illness can be quite severe. Powassan virus can cause encephalitis and meningitis. Other symptoms include fever, headache, vomiting, weakness, confusion, loss of coordination, difficulty speaking, and seizures. About half of survivors have permanent neurologic conditions including headaches, muscle wasting, and memory problems. Approximately 10 percent of cases result in death. There is no specific treatment for Powassan virus disease. Patients with severe illness are often hospitalized and may receive respiratory support, intravenous fluids, and medications to reduce swelling of the brain. One case of Powassan virus disease has been reported in North Dakota.

Rocky Mountain Spotted Fever

Rocky Mountain Spotted Fever (RMSF) is a tickborne illness caused by the bacteria *Rickettsia rickettsii*. *R. rickettsii* is transmitted by the American dog tick (*D. variabilis*), as well as other *Dermacentor* species. RMSF is the most serious and commonly reported spotted fever group (SFG) rickettsioses in the United States. Other pathogens in the SFG include *Rickettsia akari*, *Rickettsia parkeri*, and *Rickettsia philipii*. Spotted fevers can range in severity from mild to life-threatening. RMSF can present with non-specific symptoms such as fever and headache but can rapidly progress to a serious illness. A rash usually develops two to four days after fever begins. Other symptoms include stomach pain, nausea, vomiting, loss of appetite, and muscle pain. Delayed treatment may lead to severe illness or death. Some patients who recover from severe RMSF may be left with irreversible damage including hearing loss, paralysis, mental disability, or damage to blood vessels in extremities that may require amputation of arms, legs, fingers or toes. Early treatment with antibiotics can prevent severe illness and death. Thirty-two cases of RMSF were reported to the NDDoH from 2003 to 2017; 14 cases were reported in 2017.

***Rickettsia parkeri* Rickettsiosis**

Rickettsia parkeri is closely related to *Rickettsia rickettsia*, the causative agent of Rocky Mountain Spotted Fever (RMSF). *R. parkeri* rickettsiosis and RMSF present with similar signs and symptoms including fever, headache, and sparse rash on the trunk and extremities. *R. parkeri* will typically present with an inoculation eschar at the site where the tick was attached. The eschar is not common in RMSF cases. The symptoms begin to show up several days after the eschar appears. *R. parkeri* is transmitted by the Gulf Coast ticks which are typically seen in the mid-Atlantic states and southern parts of Arizona. Treatment for *R. parkeri* rickettsiosis is doxycycline.

Tularemia

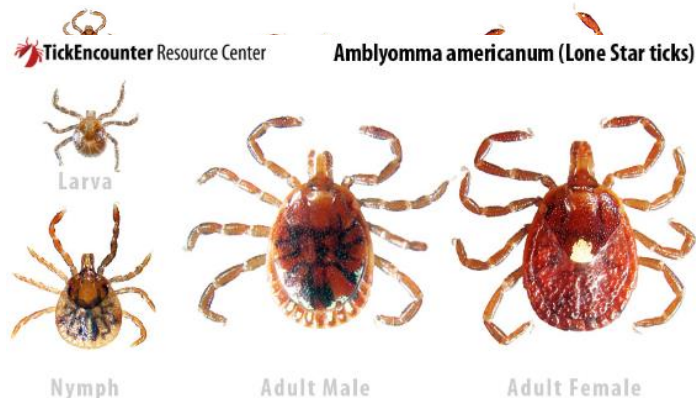
Tularemia is caused by *Francisella tularensis* bacteria. *F. tularensis* can be transmitted by tick and deer fly bites, skin contact with infected animals, ingestion of contaminated water, inhalation of contaminated aerosols or agricultural dusts, or laboratory exposure. Several species of ticks are known to transmit *F. tularensis* to humans, including the American dog tick (*D. variabilis*), the wood tick (*D. andersoni*), and the lone star tick (*A. americanum*). Symptoms of tularemia vary depending on the route of transmission. All forms of tularemia present with fever, which can be as high as 104°F. Other symptoms of tularemia can include chills, headaches, diarrhea, muscle aches, joint pain, dry cough, and progressive weakness. There are two forms of tularemia commonly associated with tick bites. The first is ulceroglandular disease, the most common form of tularemia. A skin ulcer appears at the site of the tick bite. The ulcer is accompanied by swollen glands (lymph nodes), usually in the armpit or groin. The second form of Glandular disease is similar to ulceroglandular but does not include an ulcer. Symptoms can appear between one and 21 days after exposure, but usually appear within three to five days. Antibiotics are used to treat tularemia. Nineteen cases of tularemia were reported to the NDDoH from 2007 to 2017; however, few of those cases were likely caused by ticks. One case was reported in 2017.

For more information on tickborne diseases, visit www.ndhealth.gov/disease/Tickborne or www.cdc.gov/ticks/diseases/index.html.

 TickEncounter Resource Center **Ixodes scapularis (Blacklegged ticks or Deer ticks)**



 TickEncounter Resource Center **Dermacentor andersoni (Rocky Mountain Wood Ticks)**



**These tick pictures are from the University of Rhode Island Tick Encounter Resource Center

Tick Life Cycle and Ticks in North Dakota

There are two different categories of ticks: hard ticks and soft ticks. The following description of the life cycle is written pertaining to the hard tick, as those are the ticks found in North Dakota.

All ticks have the following four stages in their life cycle: egg, 6-legged larvae (seed tick), 8-legged nymph, and adult. Most ticks, throughout the course of their development, will feed on three hosts over the span of two to three years. After hatching from their eggs, the ticks must eat blood at every stage of development to survive. Most ticks die because they don't find a host for their next feeding. Ticks can feed on mammals, birds, reptiles, and amphibians. Some ticks feed on the same host during all stages of their life, but most prefer a different host animal at each stage.

Ticks can find their host by detecting any of the following: carbon dioxide emitted by warm-blooded animals, body odors, $\nabla \rightleftharpoons \leftrightarrow \nabla \downarrow \leftrightarrow \rightarrow$ body heat, moisture, and vibrations. Ticks wait for a host along well-used paths, resting in tall grasses and shrubs.

Ticks cannot fly or jump, so they wait in a position known as "questing." While questing, ticks hold onto leaves and grass with their third and fourth pairs of legs. They hold their first pair of legs outstretched, waiting for a host to come by. Once the host brushes up against the tick, the tick quickly climbs onto the host where it will either attach immediately, or it will climb to a place where the skin is thinner, such as the ear. In many species, the ticks in the larva stage quest at ground level, seeking out smaller hosts. Nymphs climb to higher vegetation to find larger hosts, while adult ticks climb highest of all to find the largest hosts. Some species will find one host and spend their whole life on it.

It is during the feeding process that ticks transmit or acquire pathogens. Preparation for feeding can take anywhere from 10 minutes to two hours, depending on the stage of life. Once the tick finds a spot to feed, it grabs the host's skin and cuts into the surface. When attaching to the host, the tick will secrete saliva that has an anesthetic in it. It's because of this anesthetic effect that the host often does not feel the tick attach itself. The tick will insert a feeding tube into the incision it has made. The feeding tube often has barbs that keeps the tick in place. Some species secrete a cement-like substance that will keep the tick firmly attached while eating. Depending on where the tick has attached itself, it may go unnoticed, and the tick can feed for several days. If the host has a bloodborne infection, the tick will ingest the pathogen. While feeding, small amounts of saliva from the tick can enter the host animal. If the tick has acquired a pathogen during any of its previous feedings, it can now be transmitted to the host through the tick's saliva. Some pathogens can be transferred to the host in as little as 15 minutes, whereas other pathogens require the tick to be attached to the host for up to 48 hours. When removing a tick from the host, it is imperative to grab the tick as close to the skin's surface as possible and to lift straight up from the skin. Twisting or jerking the tick can cause the mouth-parts to break off and remain in the skin, allowing for potential pathogens to continue to be transmitted to the host. After feeding, most ticks will drop off and prepare for the next stage of life.

Ticks begin their life as an egg. The adult female lays eggs in the spring. As ambient temperatures and moisture levels rise, eggs hatch. The ticks emerge from the eggs as a six-legged larva and begin looking for a host to feed upon. Some species of tick larvae can live up to 540 days without feeding; however, a blood host is necessary to continue through the life cycle. A larva will feed for approximately five days, then it drops off the host, digests its blood meal and begins to grow. During late summer, approximately one to three weeks after feeding, the larvae molt into eight-legged nymphs. The nymphs are typically inactive during the winter and will start to feed again in the spring, when they will lie in wait for a second host to attach to and engorge on blood. It takes two to three days for nymphs to become engorged. After engorgement, nymphs drop to the ground where they will molt again into the adult ticks. The feeding and molting process of the nymphs occurs throughout the summer months, while the fall is spent feeding and breeding. The adult tick's sole purpose is to hunt for a third host so it can feed and then breed. It takes about four to seven days for adults to become fully engorged. Adult ticks will mate after engorgement on a blood meal. The adult female tick will deposit 3,000-6,000 eggs on the ground. Common places for the egg deposits to be made are inside wood piles, under rocks, and in crevices of walls and structures. Male ticks will usually die after mating with one or more females, whereas the females die soon after laying their eggs.

Dermacentor variabilis, the American dog tick, in its nymph stage, can live up to 580 days without feeding. Adults can live up to two years without feeding. They are most active from mid-April to early September, whereas the larvae are most active from March through July. Nymphs are active from June to early September. *D. variabilis* will

usually take three months to three years to complete a life cycle, whereas the deer tick (*I. scapularis*), generally takes two years to complete a life cycle.

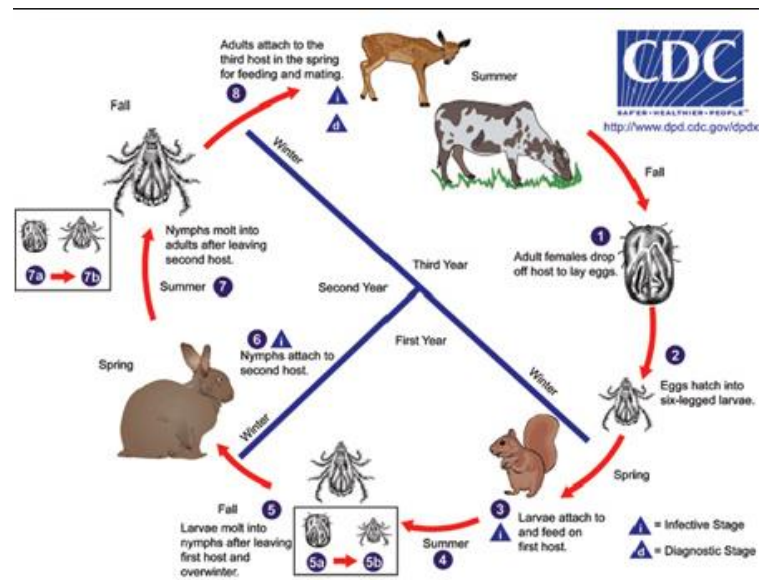
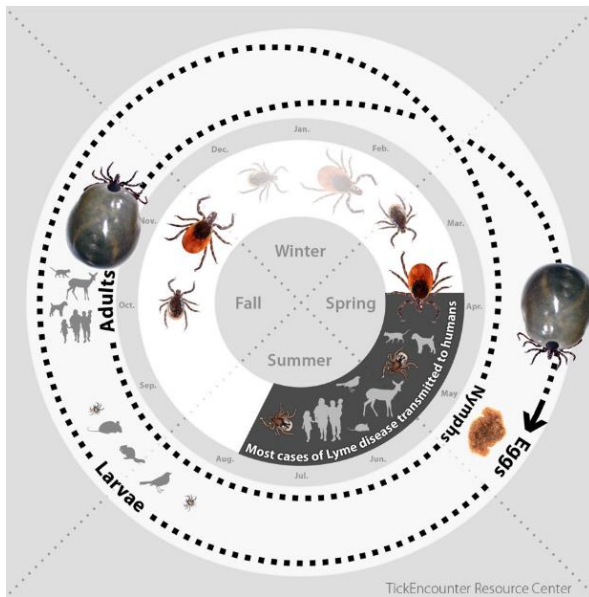
Dermacentor andersoni, the Rocky Mountain wood tick, is found predominantly in shrublands, lightly wooded areas, open grasslands, and along trails. All stages of this tick can spread disease. In the mountain region of the United States, adult males and females are active from January through November, but most commonly are seen in late spring/early summer. The activity diminishes during the mid-summer. Nymphs are active March through October and can survive up to 300 days without feeding. Larvae can go 117 days without feeding and become more active in March through October. It typically takes two to three years to complete a life cycle.

Both *Dermacentor* species look alike visually and are virtually unable to be speciated macroscopically or microscopically. The species typically found in the North Dakota is *Dermacentor variabilis*.

Cold temperatures do not affect *I. scapularis*, as they will find shelter under leaf litter during the winter months and begin looking for a host again once temperatures are above freezing. Engorged larvae molt over the winter and emerge in May as poppy seed-sized nymphs. Because the nymphs are so small, the feeding often goes unnoticed, and most people do not remember being bitten by a tick. Adult *I. scapularis* become active in October and will remain active whenever the ground is not frozen. In fact, adult deer ticks begin their feeding activity around the time of the first frost. Engorged females will survive the winter and lay their eggs in the spring. The eggs will hatch in the summer, and the life cycle begins again when the larvae become active again in late summer to early fall.

The lone star tick, *Amblyomma americanum*, is found mostly in wooded areas with thick undergrowth and around animal resting areas. The four stages of the lone star tick's life cycle are the same as the other hard ticks, with the nymphs being active in May through August and adults being active in April through August. Adult females have a distinct white dot or "lone star" on their backs. Adult males have varied white streaks or spots around the margins of their shield. The lone star tick is known to be an aggressive biter of humans in all stages of the life cycle. Larvae do not carry disease, but the nymphs and adults are known to transmit numerous diseases. There is also believed to be an association between a bite from the lone star tick and an allergy to alpha-gal, a carbohydrate found in the meat of mammals.

During the 2019 tick surveillance season, most ticks collected were identified as American dog ticks (*D. variabilis*). Deer ticks (*I. scapularis*) were submitted from Grand Forks, Walsh, Burleigh, Richland, Morton, Traill, Cass, Pembina, Stutsman, Benson, Eddy, Cavalier, Bottineau, McKenzie, Sioux, Pierce, and Mercer counties. Five ticks identified as lone star ticks (*A. americanum*) were submitted from Cass, Stutsman, Richland, Emmons, and Ramsey counties. Additional information about the 2019 tick surveillance project can be found at www.ndhealth.gov/disease/Tickborne/.

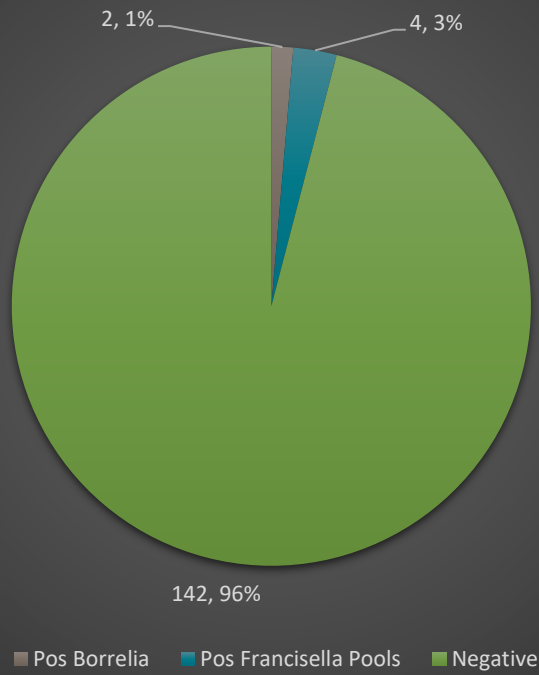


**The first picture is of the *Ixodes* life cycle from the University of Rhode Island Tick Encounter. The second picture is the 3-year life cycle of a hard tick, including both the *Dermacentor* and *Ixodes* from the CDC.

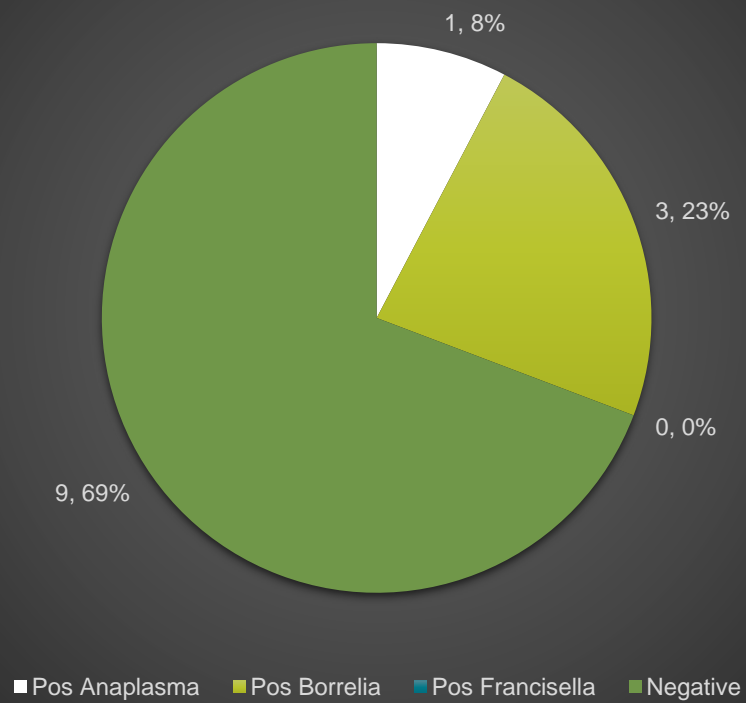
PCR Results

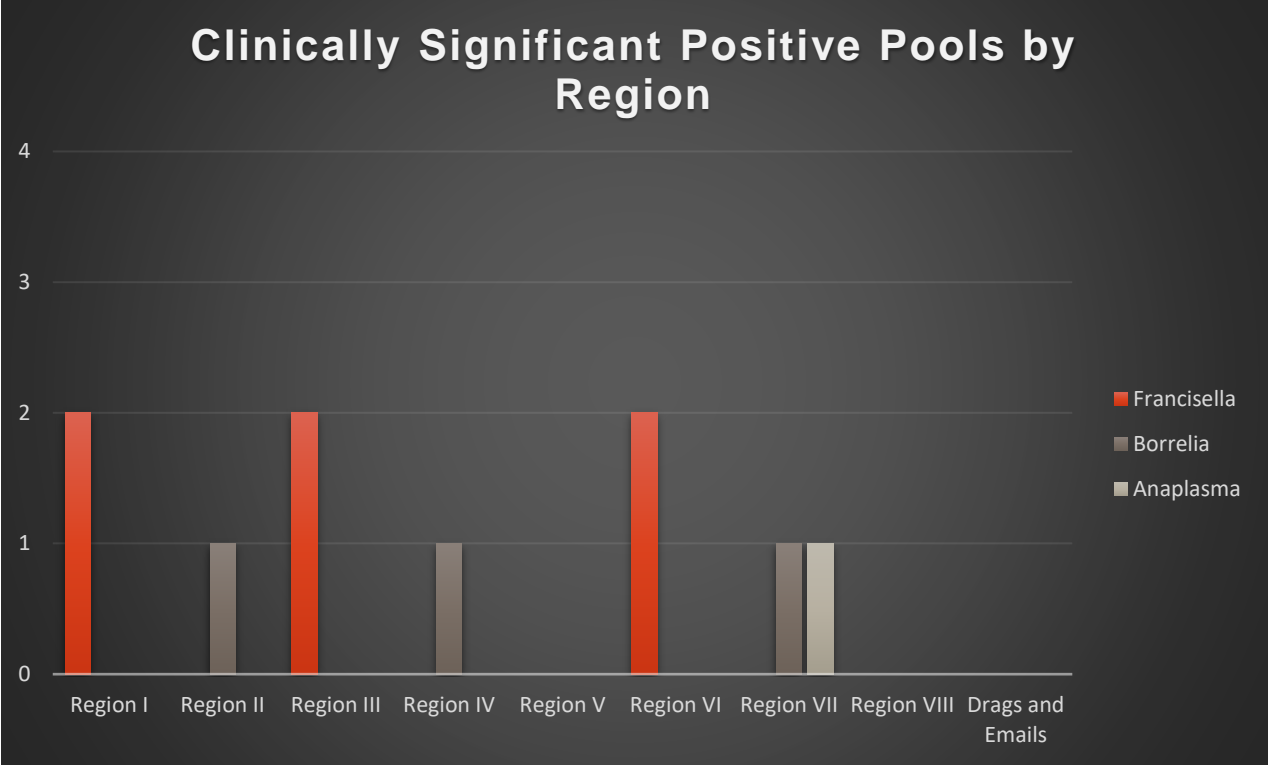
Each submission throughout the season was separated by species, and each species was pooled together by region, with each pool containing a maximum of 20 ticks. No engorged ticks were tested. Throughout the 35-week season, 161 pools were tested for the 8 markers: *Rickettsia parkeri*, Rocky Mountain Spotted Fever, *Tularemia*, *Anaplasma*, *Babesia*, *Borrelia/Lyme*, Powassan virus, and Colorado Tick Fever. Of the 146 *Dermacentor variabilis* pools tested, 4 tested positive for *Tularemia* and 2 tested positive for *Borrelia/Lyme*. Of the 13 *Ixodes scapularis* pools tested, 3 tested positive *Borrelia/Lyme* and 1 tested positive for *Anaplasma*. Attached you will find your submission data, as well as the tick pool testing data specific for the region you were in. We look forward to working with you for this upcoming season. To view the 2019 tick report in its entirety please visit:

2019 Dermacentor Pools



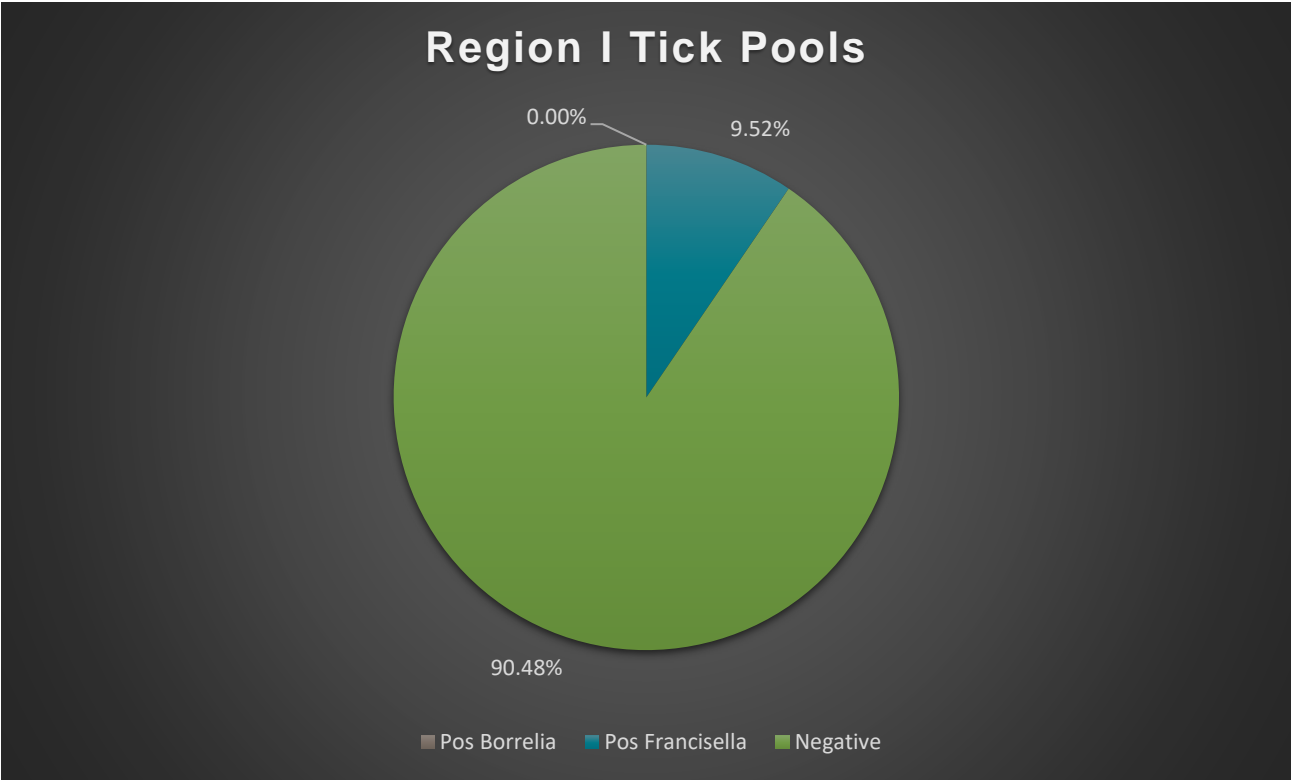
2019 Ixodes Pools



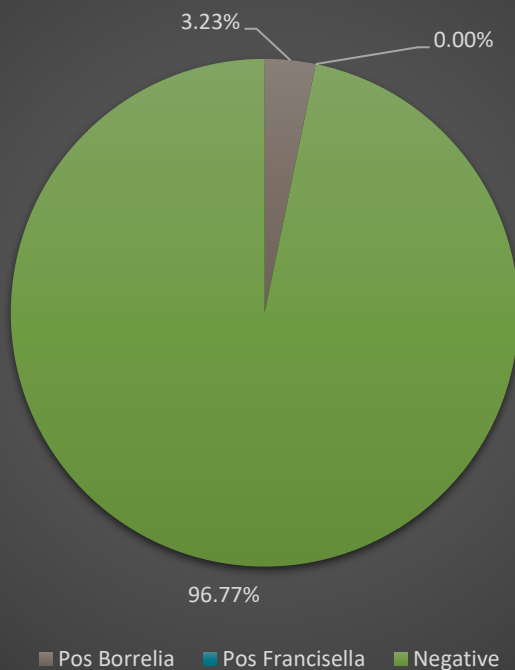


Tick PCR Pool Results by Region

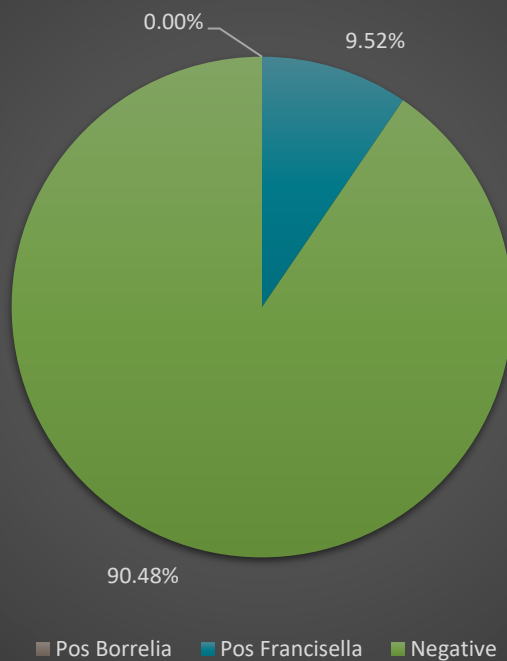
The following regional totals are a combination of both *Dermacentor* and *Ixodes* pools.



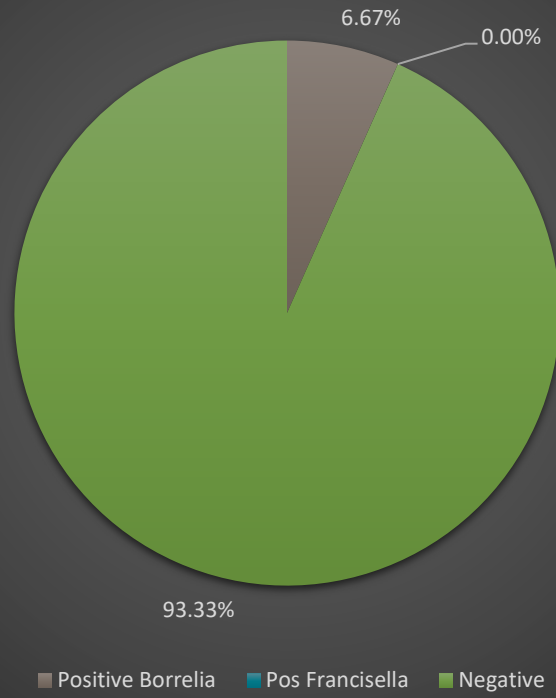
Region II Tick Pools



Region III Tick Pools



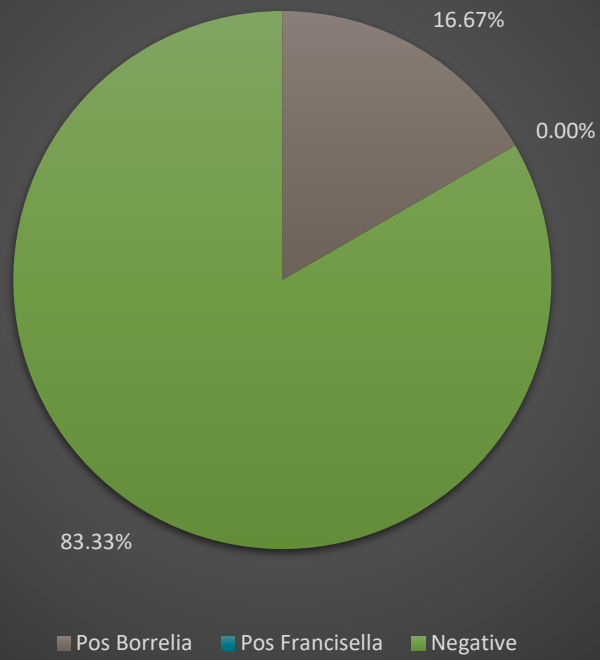
Region IV Tick Pools



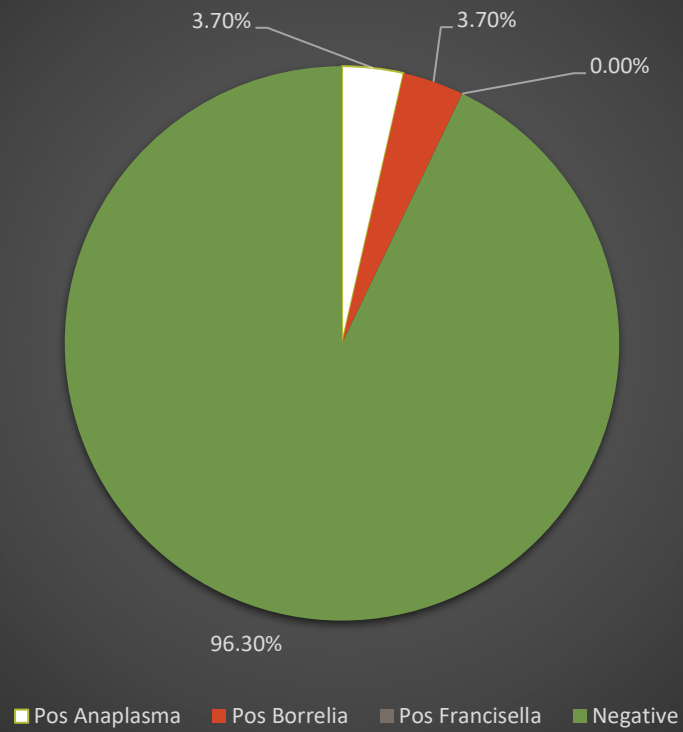
Region V Tick Pools



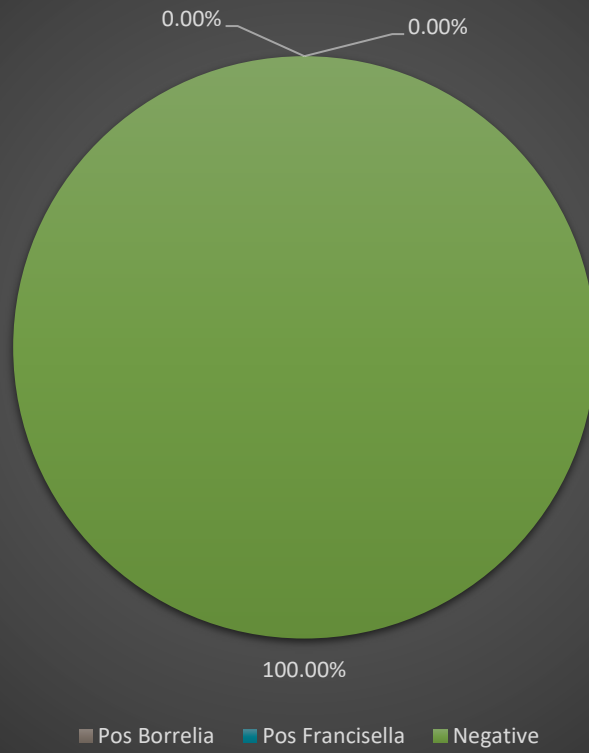
Region VI Tick Pools



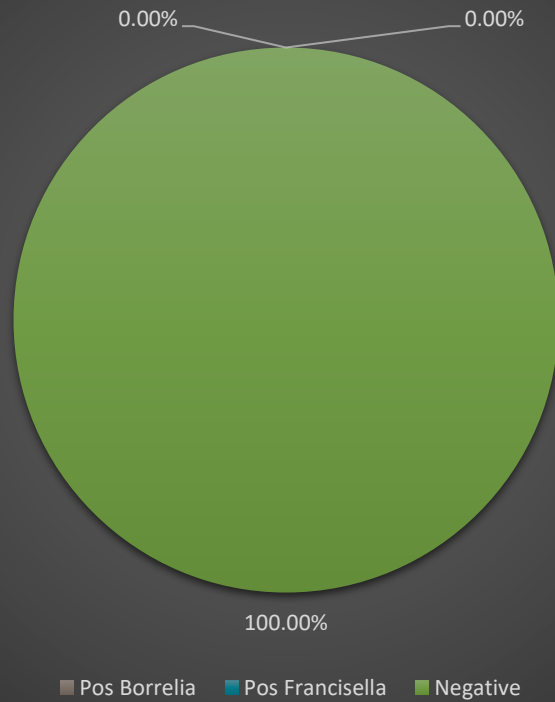
Region VII Tick Pools



Region VIII Tick Pools



Tick Drags and Email Submissions



2019 Tick Surveillance Program		
Submission Dates		
Week	Collection Week	Submission Date
1	April 1- April 7	April 8
2	April 8- April 14	April 15
3	April 15- April 21	April 22
4	April 22- April 28	April 29
5	April 29- May 5	May 6
6	May 6- May 12	May 13
7	May 13- May 19	May 20
8	May 20- May 26	May 28
9	May 27- June 2	June 3
10	June 3- June 9	June 10
11	June 10- June 16	June 17
12	June 17- June 23	June 24
13	June 24- June 30	July 1
14	July 1- July 7	July 8
15	July 8- July 14	July 15
16	July 15- July 21	July 22
17	July 22- July 28	July 29
18	July 29- August 4	August 5
19	August 5- August 11	August 12
20	August 12- August 18	August 19
21	August 19- August 25	August 26
22	August 26- Sept 1	Sept 3
23	Sept 2- Sept 8	Sept 9
24	Sept 9- Sept 15	Sept 16
25	Sept 16- Sept 22	Sept 23
26	Sept 23- Sept 29	Sept 30
27	Sept 30- Oct 6	Oct 7
28	Oct 7- Oct 13	Oct 14
29	Oct 14- Oct 20	Oct 21
30	Oct 21- Oct 27	Oct 28
31	Oct 28- Nov 3	Nov 4
32	Nov 4- Nov 10	Nov 11
33	Nov 11- Nov 17	Nov 18
34	Nov 18- Nov 24	Nov 25
35	Nov 25- Dec 1	Dec 2

References

1. Dupuis II AP, Peters RJ, Prusinski MA, Falco RC, Ostfeld RS, Kramer LD. Isolation of Deer Tick Virus (Powassan virus, lineage II) from *Ixodes scapularis* and Detection of Antibody in Vertebrate Hosts Sampled in the Hudson Valley, New York State. *Parasites & Vectors*. 2013;6:185. doi:10.1186/1756-3305-6-185.
2. Diaz MH, Bai Y, Malania L, Winchell JM, Kosoy MY. Development of a Novel Genus-Specific Real-Time PCR Assay for Detection and Differentiation of Bartonella Species and Genotypes. *Journal of Clinical Microbiology*. 2012;50(5):1645-1649. doi:10.1128/JCM.06621-11.
3. Gunnell MK, Lovelace CD, Satterfield BA, Moore EA, O'Neill KL, Robison RA. A Multiplex Real-Time PCR Assay for the Detection and Differentiation of *Francisella tularensis* Subspecies. *J. Med. Microbiol.* 2012;61(11):1525-1531 doi:10.1099/jmm.0.046631-0
4. Skottman, T., Piiparinen, H., Hyytiäinen, H. et al. Simultaneous Real-Time PCR Detection of *Bacillus anthracis*, *Francisella tularensis* and *Yersinia pestis*. *Eur J Clin Microbiol Infect Dis*.2007;26(3):207-211. <https://doi.org/10.1007/s10096-007-0262-z>
5. O'Rourke M, Traweger A, Lusa L, Stupica D, Maraspin, Barrett PN, et al. Quantitative Detection of *Borrelia burgdorferi* sensu lato in Erythema Migrans Skin Lesions Using Internally Controlled Duplex Real Time PCR. *PLoS ONE*. 2013;8(5):e63968. doi:10.1371/journal.pone.0063968.
6. CDC. Ticks. Atlanta, GA: US Department of Health and Human Services, CDC: 2017. www.cdc.gov/ticks/
7. University of Rhode Island. Tick Encounter Resource Center. Kingston,RI: University of Rhode Island: 2018. <http://www.tickencounter.org/>
8. Minnesota Department of Health. Ticks. St. Paul, MN: Minnesota Department of Health: 2018. <http://www.health.state.mn.us/divs/idepc/dtopics/tickborne/ticks.html>
9. Nelder MP, Russell CB, Sheehan NJ, Sander B, Moore S, Li Y, et al. Human pathogens associated with the blacklegged tick *Ixodes scapularis*: a systematic review. *Parasites & Vectors*. 2016;9:265. doi:10.1186/s13071-016-1529-y.
10. University of Florida Entomology & Nematology. American dog tick. Gainesville, FL: University of Florida: 2013. http://entnemdept.ufl.edu/creatures/urban/medical/american_dog_tick.htm
11. Loftis AD, Massung RF, Levin ML. Quantitative Real-Time PCR Assay for Detection of *Ehrlichia chaffeensis*. *Journal of Clinical Microbiology*. 2003;41(8):3870-3872. doi:10.1128/JCM.41.8.3870-3872.2003.
12. Johnson TL, Graham CB, Boegler KA, Cherry CC, Maes SE, Pilgard MA, et al. Prevalence and Diversity of Tick-Borne Pathogens in Nymphal *Ixodes scapularis* (Acari: Ixodidae) in Eastern National Parks. *Journal of Medical Entomology*. 2017;54(3):742-751. doi:10.1093/jme/tjw213.

13. Harris RM, Couturier BA, Sample SC, Coulter KS, Casey KK, Schlaberg R, et al. Expanded Geographic Distribution and Clinical Characteristics of *Ehrlichia ewingii* Infections, United States. *Emerging Infectious Diseases*. 2016;22(5):862-865. <https://dx.doi.org/10.3201/eid2205.152009>
14. Kato CY, Chung IH, Robinson LK, Austin AL, Dasch GA, Massung RF. Assessment of Real-Time PCR Assay for Detection of *Rickettsia* spp. and *Rickettsia rickettsii* in Banked Clinical Samples. *Journal of Clinical Microbiology*. 2013;51(1):314-317. doi:10.1128/JCM.01723-12.
15. De la Fuente J, Massung RF, Wong SJ, Chu FK, Lutz H, Meli M, et al. Sequence Analysis of the *msp4* Gene of *Anaplasma phagocytophilum* Strains. *Journal of Clinical Microbiology*. 2005;43(3):1309-1317. doi:10.1128/JCM.43.3.1309-1317.2005.
16. Dugat T, Loux V, Marthey S, Moroldo M, Lagree AC, Boulouis HJ, et al. Comparative Genomics of First Available Bovine *Anaplasma phagocytophilum* Genome Obtained with Targeted Sequence Capture. *BMC Genomics*. 2014 15:973. <https://doi.org/10.1186/1471-2164-15-973>
17. Santos AS, Santos-Silva MM, Almeida VC, Bacellar F, Dumler JS. Detection of *Anaplasma phagocytophilum* DNA in *Ixodes* Ticks (Acari: *Ixodidae*) from Madeira Island and Setúbal District, Mainland Portugal. *Emerging Infectious Diseases*. 2004;10(9):1643-1648. doi:10.3201/eid1009.040276.
18. Teal AE, Habura A, Ennis J, Keithly JS, Madison-Antenucci S. A New Real-Time PCR Assay for Improved Detection of the Parasite *Babesia microti*. *Journal of Clinical Microbiology*. 2012;50(3):903-908. doi:10.1128/JCM.05848-11.
19. Homer MJ, Aguilar-Delfin I, Telford SR, Krause PJ, Persing DH. Babesiosis. *Clinical Microbiology Reviews*. 2000;13(3):451-469. PMID: PMC88943
20. Angelakis E, Billeter SA, Breitschwerdt EB, Chomel BB, Raoult D. Potential for Tick-borne Bartonellosis. *Emerging Infectious Diseases*. 2010;16(3):385-391. doi:10.3201/eid1603.091685.
21. Courtney JW, Kostelnik LM, Zeidner NS, Massung RF. Multiplex Real-Time PCR for Detection of *Anaplasma phagocytophilum* and *Borrelia burgdorferi*. *Journal of Clinical Microbiology*. 2004;42(7):3164-3168. doi:10.1128/JCM.42.7.3164-3168.2004.
22. Denison AM, Amin BD, Nicholson WL, Paddock CD. Detection of *Rickettsia rickettsii*, *Rickettsia parkeri*, and *Rickettsia akari* in Skin Biopsy Specimens Using a Multiplex Real-time Polymerase Chain Reaction Assay. *Clinical Infectious Diseases: An Official Publication of the Infectious Diseases Society of America*. 2014;59(5):635-642. doi:10.1093/cid/ciu358.
23. North Dakota Department of Health. Tickborne Diseases. Bismarck, ND: North Dakota Department of Health; 2018. <http://www.ndhealth.gov/disease/Tickborne/>
24. Perlman S, Hunter MS, Zchori-Fein E. The emerging diversity of *Rickettsia*. *Proc Biol Sci*. 2006; 273(1598): 2097-2106. Doi: 10.1098/rspb.2006.3541.

25. Johnson AJ, Karabatsos N, Lanciotti RS. Detection of Colorado Tick Fever Virus by Using Reverse Transcriptase PCR and Application of the Technique in Laboratory Diagnosis. *Journal of Clinical Microbiology*. 1997;35 (5):1203-8.