

North Dakota MMIS

Companion Guide to the 005010X221A Health Care Claim Payment/Advice (835)

North Dakota Medicaid
May 2017



Preface

This Companion Guide to the Accredited Standards Committee (ASC) X12 Technical Report Type 3 (TR3) and associated errata adopted under HIPAA clarifies and specifies the data content when exchanging electronically with the North Dakota MMIS.

Transmissions based on this Companion Guide, used in tandem with the v5010 ASC X12N Technical Report Type 3 (TR3), are compliant with both ASC X12N syntax and those guides. This Companion Guide is intended to convey information that is within the framework of the TR3 adopted for use under HIPAA. The Companion Guide is not intended to convey information that in any way exceeds the requirements or usages of data expressed in the TR3.

Table of Contents

1 Introduction	1
Scope	2
Overview.....	3
References	3
Additional Information	3
2 Getting Started	4
Working with North Dakota Medicaid	4
Scheduled Downtime	4
Non-Scheduled Downtime.....	5
Unscheduled/Emergency Downtime.....	7
Trading Partner Registration	7
Certification and Testing Overview.....	8
3 Testing with the North Dakota MMIS	9
4 Connectivity with the North Dakota MMIS	10
Process Flows	10
Editing and Validation Flow Diagram.....	10
Transmission Administration Procedures	11
Re-Transmission Procedures.....	11
Communication Protocol Specifications	12
Web Portal	12
ND Enterprise Managed File Transfer	15
Passwords	15
5 Contact Information	17
EDI Customer Service	17
EDI Technical Assistance	17
Provider Services Number	17
Applicable Web site/E-mail	17
6 Control Segments/ Envelopes	19
ISA-IEA.....	19
GS-GE	19
ST-SE.....	19

7 North Dakota Medicaid Specific Business Rules and Limitations	20
8 Acknowledgements and/or Reports	21
Transmission Errors and Reports.....	21
9 Trading Partner Agreements.....	22
Trading Partners	22
10 Transaction Specific Information	23
ASC X12N 835 Health Care Claim Payment/Advice	23
Appendices.....	30
Implementation Checklist.....	30
Business Scenarios	31
Transmission Examples.....	31
Frequently Asked Questions	31
Change Summary.....	32

1 Introduction

This 835 Companion Guide is intended for use by Trading Partners in conjunction with the ASC X12N 835 National Electronic Data Interchange Technical Report Type 3 (TR3). The TR3 can be accessed at <http://store.x12.org/store/healthcare-5010-consolidated-guides>.

This Companion Guide outlines the procedures necessary for engaging in Electronic Data Interchange (EDI) with the North Dakota MMIS and specifies data clarification where applicable. [Section 10 Transaction Specific Information](#) contains provider data clarifications for fields and values that are specific for the ND MMIS.

Transaction specific data will be detailed using a table. Each row on the table will contain information on the loop, segment, or data element that is specific to the ND MMIS. The table format is as described below:

TR3 Page	Loop ID	Reference	Name	Codes	Length	Notes/Comments
87	1000A	N1	Payer Identification			This type of row always exists to indicate that a new segment has begun. It is always shaded at 10% and notes or comments about the segment itself goes in this cell.
87	1000A	N102	Name		40	This type of row exists to limit the length of the specified data element.
169	2100	REF	Other Claim Related Identification			
169	2100	REF01	Reference Identification Qualifier	1L, 1W, 6P, EA, IG, SY		These are the only codes transmitted by the payer.

TR3 Page	Loop ID	Reference	Name	Codes	Length	Notes/Comments
			Member Identification Number	1W		This type of row exists when a note for a particular code value is required. For example, this note may say that value 1W is the default. Not populating the first 3 columns makes it clear that the code value belongs to the row immediately above it.
186	2110	SVC	Service Payment Information			
187	2110	SVC01-1	Product/Service ID Qualifier	AD		This row illustrates how to indicate a component data element in the Reference column and also how to specify that only one code value is applicable.

Scope

This Companion Guide is intended for use by North Dakota Medicaid Trading Partners for the retrieval of the X12N 835 transactions from North Dakota Medicaid. This Companion Document is to be used in conjunction with the 835 TR3.

ND Medicaid provides connectivity for the flow of medical information and data between medical providers, facilities, vendors, claim payment agencies, clearinghouses and the Front-end Online Transaction Processor (OLTP). Beyond the receipt and delivery of this data, ND Medicaid provides translation to and from ASC X12N standard formats.

Please refer to [Section 4 Connectivity with the North Dakota MMIS](#) for more information regarding transmission methods.

Overview

This Companion Guide is divided into 10 Sections. Each section will describe the process or requirement that each Trading Partner must complete to submit and receive X12N transactions for North Dakota Medicaid.

Each section will provide the needed information of how Trading Partners will be required to complete successful transmissions to and from the North Dakota Medicaid MMIS.

This Companion Guide will provide contact information for obtaining assistance from the North Dakota Medicaid MMIS as well as providing data clarifications, including North Dakota Medicaid specific data requirements.

References

This document serves as a companion to the ASC X12N Electronic Data Interchange Technical Report Type 3 (TR3) as adopted under HIPAA. These can be accessed at: <http://store.x12.org/store/healthcare-5010-consolidated-guides>

Additional Information

For more information on North Dakota Medicaid EDI services for providers, including provider enrollment and claim transaction information, please visit: <http://www.nd.gov/dhs>.

2 Getting Started

Working with North Dakota Medicaid

We provide availability for transaction transmission and download retrieval 24 hours a day, seven days a week. This availability is subject to scheduled and unanticipated non-scheduled downtime.

Scheduled Downtime

Holiday Schedule

The following days are recognized as official State holidays. Please note that during these days assistance with system issues will be very limited.

- New Year's Day, January 1
- Martin Luther King Day, the 3rd Monday in January
- President's Day, the 3rd Monday in February
- Memorial Day, the last Monday in May
- Independence Day, July 4
- Labor Day, the 1st Monday in September
- Veteran's Day, November 11
- Thanksgiving Day, the 4th Thursday in November
- Christmas Day, December 25
- Every day appointed by the President of the United States, or by the Governor of North Dakota for a public holiday

Routine Maintenance

It is operational policy to schedule preventative maintenance periods on the second Thursday of the month from 09:00PM to 4:00AM CT. Any alteration from this schedule will be noted in the notification message as described below.

For Scheduled downtime, a notification message will be published on the Home screen and login screen.

Scheduled downtime – Home Screen

The screenshot shows the North Dakota MMIS Web Portal Home page. At the top, there is a navigation bar with links for Home, Programs, Member, Provider, Documentation, and Databases. Below the navigation bar is a banner image showing healthcare professionals and patients. The main content area features several portlets: 'Welcome' (with a message about scheduled maintenance for May 2017), 'Provider Registration' (with a message about user ID and password requirements), 'Quick Links' (with links for Find a Health Care Provider, Benefits Overview, Provider Enrollment, and Search Health & More), and 'Sign In' (with a message about logging in based on user role). At the bottom, there is a footer with copyright information and links for Privacy Policy, Site Map, Terms of Use, Browser Requirements, and Accessibility Compliance.

Scheduled downtime – Login Screen

The screenshot shows the North Dakota MMIS Web Portal Login page. At the top, there is a navigation bar with links for Home, Programs, Member, Provider, Documentation, and Databases. Below the navigation bar is a banner image showing healthcare professionals and patients. The main content area features several portlets: 'Quick Links' (with links for Enrollment, Provider Manual, FAQ, Billing Manual, Messages & Announcements, and Home), 'Provider's Test Point on Access to Affordable Health Insurance', and 'Provider' (with a message about the state-of-the-art electronic health care administration system). A 'Sign In' portlet is also visible, containing a message about logging in based on user role and a form with fields for User ID and Password, and a 'Forgot User Name or Password?' link. At the bottom, there is a footer with copyright information and links for Privacy Policy, Site Map, Terms of Use, Browser Requirements, and Accessibility Compliance.

Non-Scheduled Downtime

In the event of a non-scheduled downtime, North Dakota Medicaid will resolve the outage as quickly as possible. A notification message will be displayed near the Sign In portlet of the HOME page and near the Login portlet of the Login screen, as noted below. The

anticipated timeframe for resolution will be noted on the message. Also, the message will state the extent of the disruption, whether it affects the MMIS functionality only, or if it also affects electronic file transfer processing.

In the event that the file transfer processing is affected, trading partners will receive an email notification.

Non – Routine Downtime (MMIS and File Transfer affected)– Home Screen



Non – Routine Downtime (MMIS and File Transfer affected)– login Screen



Non – Routine Downtime (File Transfer affected)– Home Screen



Non – Routine Downtime (File Transfer affected)– login Screen



Unscheduled/Emergency Downtime

North Dakota Medicaid will resolve the outage as expeditiously as possible, for Unscheduled/Emergency Downtime. Along with the MMIS notification messages outlined above, the system sends an email notification to the trading partners.

Trading Partner Registration

All entities that send electronic transactions to ND Medicaid for processing and retrieve reports and responses must enroll as EDI Trading Partners. The completed Trading Partner enrollment application provides the North Dakota Customer Service Unit the information necessary to assign a Login Name, Login ID, and Trading Partner ID, which are required to send or retrieve electronic transactions. The Trading Partner enrollment application is available on the North Dakota Medicaid Web site at <https://mmis.nd.gov/portals/wps/portal/EnterpriseHome>. Click on Provider Enrollment in the Quick Links pod to get to the Trading Partner enrollment application.

Certification and Testing Overview

X12N transaction files are certified by EDIFICS Transaction Manager software. Transaction Manager provides accurate trading partner verification and validation of HIPAA transactions (Type 1 EDI Syntax, Type 2 HIPAA Syntax, and some Type 7 ND Trading Partner Specific). ND Medicaid requires transaction testing with all enrolling Trading Partners .

Once a Trading Partner has successfully enrolled with North Dakota Medicaid, they will be contacted by an EDI Specialist. The EDI Specialist will guide the Trading Partner through the testing process.

3 Testing with the North Dakota MMIS

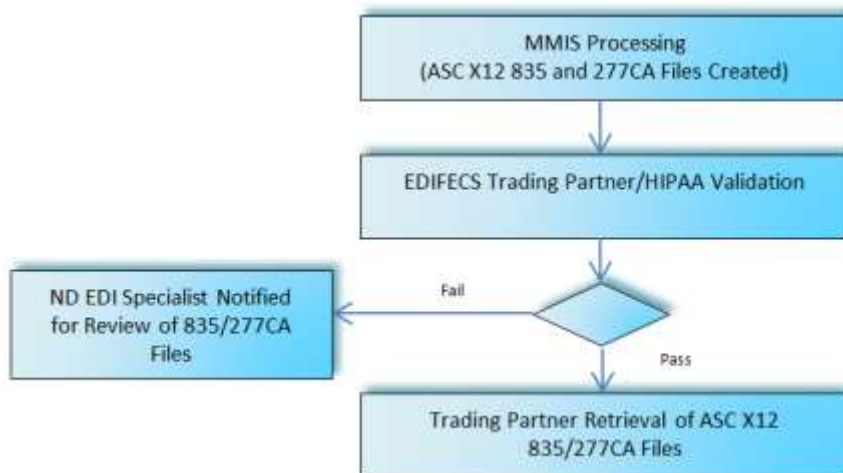
Before receiving production files from ND Medicaid, the Trading Partner must receive two valid test files. If the Trading Partner has received a test status of “Pass”, then ND Medicaid will contact the Trading Partner and update the Trading Partner status to Production.

These tests verify a Trading Partner’s ability to receive an X12 835 transaction containing valid data in the required format. ND Medicaid will include a minimum of 10 unique transactions per test file to ensure more comprehensive testing. Should the file receive a test status of “Fail”, then Trading Partners should review the errors. If Trading Partners require further assistance, please contact a ND EDI Specialist by email at NDMMISED@nd.gov or call (800) 755-2604 (option 1) or (701) 328-4043.

4 Connectivity with the North Dakota MMIS

Process Flows

Editing and Validation Flow Diagram



Legend:

1. **MMIS Processing:** MMIS will create the 835 and 277CA files in accordance with the ASC X12 Technical Reprot Type 3 standards, with ND specific rules applied.
2. **EDIFECs Transaction Manager Processing:** The EDIFECs Transaction Manager will certify that the files pass Trading Partner verification. The Transaction Manager will also provide validation of the HIPAA transactions (Type 1 EDI Syntax, Type 2 HIPAA Syntax, and Type 7 ND Trading Partner Specific edits). In the case that the Transaction Manager finds errors in the Trading Partner verification or the HIPAA transaction validation, a ND EDI Specialist will be notified for review and correction of the file.
3. **Trading Partner Retrieval of ASC X12 Files:** The files are available for retrieval by the Trading Partner in the manner agreed on with ND Medicaid.

Transmission Administration Procedures

To receive an 835, enrolled North Dakota Trading Partners will submit X12N 837 transaction data to ND Medicaid for processing. ND Medicaid validates submission of X12N format(s). The TA1 Interchange Acknowledgement reports the syntactical analysis of the interchange header and trailer. If the data (Interchange Envelope) is invalid, the file will be rejected. A TA1 will be delivered to the Trading Partner mailbox and a copy forwarded to the Trading Partner Support Specialist for review. If the Trading Partner/Transaction Type relationship does not exist in the Trading Partner Management Database (a missing or invalid Trading Partner ID), then a TA1 will not be generated because the relationship does not exist within the ND Medicaid EDIFECs Trading Partner Management Database.. A report of the TA1 will be generated and delivered to the Trading Partner Support Specialist for additional review.

If you have questions or require assistance with your TA1 or X12C 999 please contact the Customer Service Unit by email at NDMMISED@nd.gov or call (800) 755-2604 (option 1) or (701) 328-4043. Please include your Trading Partner ID and telephone number in your email.

Re-Transmission Procedures

Transmission/Production Issues

When file retrieval or technical production issues occur, which could require the re-transmission of files, please contact the ND Customer Service Unit at (800) 755-2604 (option 1).

Please have the following information available when calling the ND Customer Service Unit regarding transmission and production issues.

- Trading Partner ID
- Web Portal Login Name (if using the Web Portal)
- Enterprise Managed File Transfer(MFT) (if using Secure FTP)

Communication Protocol Specifications

North Dakota Trading Partners can submit/retrieve X12N files and download files such as the X12N 835, X12N 277CA, TA1, and X12C 999 via the ND Health Enterprise MMIS Web Portal and MFT.

Web Portal

The Web Portal method allows a Trading Partner to initiate the retrieval of a file from ND Medicaid. A Trading Partner must be an authenticated portal user who is either an active North Dakota Provider, or an authorized representative of the Provider. The Trading Partner accesses the Web Portal via a Web browser and is prompted for a login and password. Trading Partners may select files for download to their PC or work environment using the “Browse” function. All 835 files retrieved will meet the ASC X12N 835 standard.

Web Portal Data Retrieval Procedures

The Web Portal allows a Trading Partner to initiate file retrieval. Once logged into the Provider Secure Homepage, multiple functions such as File Retrieval are available.

Downloading Files from the Web Portal

1. In your Web browser, log on to the **North Dakota MMIS Health Enterprise Portal** at <https://mmis.nd.gov/portals/wps/portal/EnterpriseHome>
2. From the **EDI** menu, select **File Retrieval Mailbox**.



North Dakota MMIS Web Portal

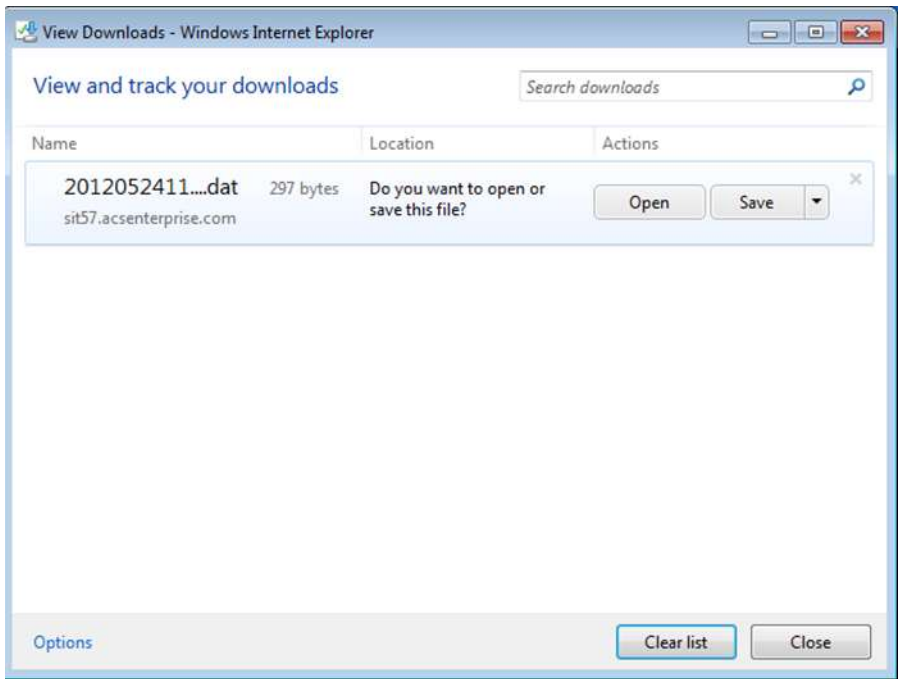
3. Select the **X12** radio button; select a file type; and if desired, enter beginning and end dates for the search.

4. Click the **Search** button. The **Results** view displays files matching the search criteria. From the **Results** view, click the Creation Date of the file for downloads.

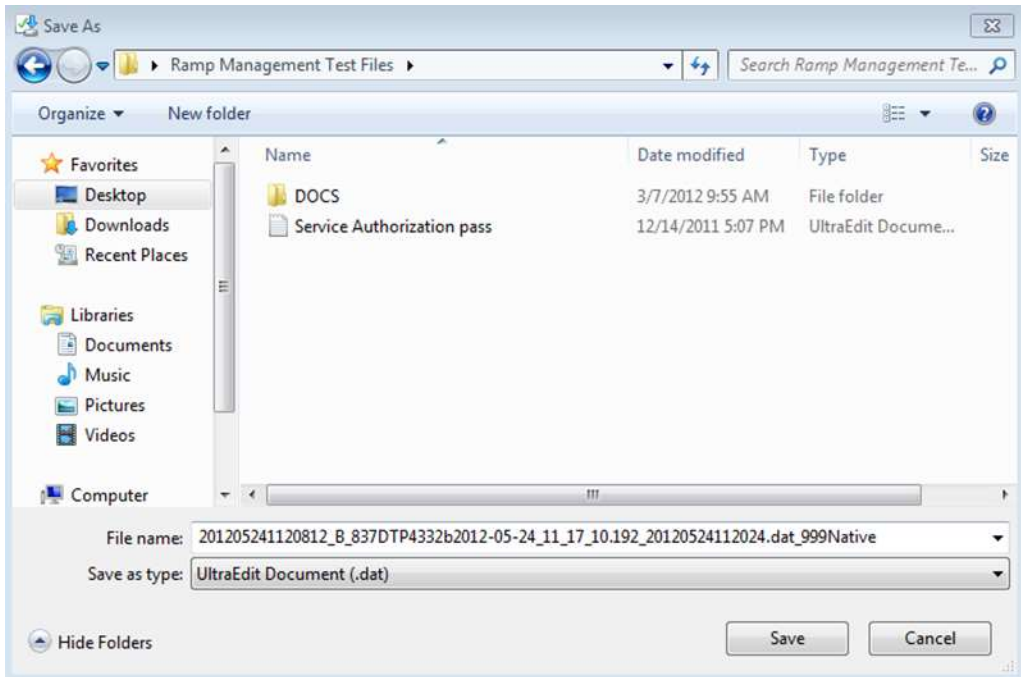
Note: After the first time selecting the files, the **Show All** box needs to be checked to retrieve them again

Creation Date	Filename	File Size
Sep 06, 2012	201209061025750_B_201209061025538_B_270_TP045_20120906102509_20120906102509.dat_999Native.dat	296
Sep 06, 2012	201209061025818_B_201209061025729_B_278_TP045_2_20120906102510_20120906102514.dat_999Native.dat	279
Sep 06, 2012	201209061025766_B_201209061025683_B_276_TP045_2_20120906102510_20120906102510.dat_999Native.dat	279
Sep 06, 2012	201209061025251_B_201209061025184_B_837ITP045_20120906102511_20120906102511.dat_999Native.dat	296
Sep 06, 2012	201209061025849_B_201209061025822_B_837D_TP045_2_20120906102510_20120906102514.dat_999Native.dat	333
Sep 06, 2012	201209060745844_B_201209060745662_B_WhiteSpaceInpnt_20120906074505_20120906074505.dat_999Native.dat	318
Sep 06, 2012	201209060740935_B_201209060740475_B_InvalidProv_20120906074006_20120906074006.dat_999Native.dat	296
Sep 06, 2012	201209060720439_B_201209060720133_B_ProfInvalid_20120906072004_20120906072004.dat_999Native.dat	296
Sep 06, 2012	201209060715584_B_201209060715210_B_FInpnt_20120906071508_20120906071508.dat_999Native.dat	318
Sep 06, 2012	201209060428407_B_201209060428037_B_201209050839111_B_201209050839339_B_Prof_McarInst_20120905083915_20120905083922.dat_20120906042817_20120906042817.dat_999Native.dat	296

5. Click **Save**, to save the file to your PC.



6. Specify a path for download, and click **Save** again.



ND Enterprise Managed File Transfer

ND Enterprise Managed File Transfer(MFT), or commonly referred to as Secure FTP, is an appropriate alternative to the North Dakota Web Portal for large volume Trading Partners (i.e. files in excess of 10MB each). MFT setup is separate from Trading Partner Enrollment, but still coordinated through the North Dakota Customer Service Unit. Trading partners may use MFT for submission and retrieval of files. Note that ND Medicaid staff will not provide technical support for applications other than MFT.

MFT Setup and Support

Upon successful Trading Partner enrollment, a Trading Partner MFT account will be created. Trading Partners set up for submission and/or retrieval of files via the MFT mechanism will receive connectivity details from the Customer Service Unit once setup is complete. This information will include login credentials, policies concerning passwords, file retention, and basic information on site navigation. The ND Enterprise Managed File Transfer secured website is <https://mft.nd.gov/>.

If the Trading Partner requires support (i.e. account becomes locked or experiences connectivity issues), the Trading Partner should contact the ND Customer Service Unit by email at NDMMISED@nd.gov, or call 701-328-4043 or 800-755-2604 (option 1).

Passwords

Log in Credentials: In order to receive your authorized user log in credentials all Trading Partners, regardless of submission/retrieval method, must be enrolled with ND Medicaid and approved as Trading Partners on the ND Health Enterprise MMIS. Log in credentials include names/ids and passwords, that will be required for the submission/retrieval of transactions to ND Medicaid.

Trading Partner ID: The Trading Partner ID links the Trading Partner to their transaction data and is the ND Health Enterprise MMIS's internal key to accessing their Trading Partner information. Please have this number available each time you contact the ND Customer Service Unit by email at NDMMISED@nd.gov, or call 701-328-4043 or (800) 755-2604 (option 1).

The following login credentials are issued depending on the chosen communication method.

Web Portal User ID/Password: This Web Portal User ID allows Trading Partners access to the North Dakota MMIS Health Enterprise Portal for functions that include file

submission and file retrieval. The ND Customer Service Unit also uses the logon name to access Web Portal data submissions.

MFT ID/Password: These are the login credentials for the ND Managed File Transfer site. These allow FTP Trading Partners to access assigned folders for submission or retrieval of files. The ND Customer Service Unit also uses this secure FTP ID to reference X12 files.

5 Contact Information

EDI Customer Service

The ND Customer Service Unit is available to all North Dakota Medicaid Trading Partners, Monday through Friday from 8:00 a.m. to 5:00 p.m., Central Time, at the following numbers:

Toll Free: (800) 755-2604 (option 1)

Local: (701) 328-4043

EDI Technical Assistance

The ND Customer Service Unit assists users with questions about electronic submissions. The ND Customer Service Unit is available to all ND Medicaid Trading Partners, Monday through Friday from 8:00 a.m. to 5:00 p.m., Central Time, at **(800) 755-2604 (option 1)** or **(701) 328-4043**. The Customer Service Unit specializes in the following:

- Provides information on available services
- Creates user accounts for file submission/retrieval for approved Trading Partners
- Verifies receipt of electronic transmissions
- Provides assistance to Trading Partners experiencing transmission/retrieval difficulties

Provider Services Number

The ND Customer Service Unit is available to all ND Medicaid Trading Partners, Monday through Friday from 8:00 a.m. to 5:00 p.m., Central Time, at **(800) 755-2604 (option 1)** or **(701) 328-4043**.

Applicable Web site/E-mail

Please visit www.nd.gov/dhs for ND Medicaid provider and Trading Partner services information, including Trading Partner enrollment information, FAQs, manuals and related documentation.

6 Control Segments/ Envelopes

ISA-IEA

ND Medicaid will create the Interchange Control Segments to validate the Interchange Envelope of each ASC X12 outbound file. The ISA table provides sender and receiver codes, authorization and delimiter information.

GS-GE

ND Medicaid creates single or multiple functional groups within an X12 file.

ST-SE

ND Medicaid creates a unique Transaction Set Control Number in the ST02. The ST02 value will match the SE02 value. Should a file contain multiple ST to SE Transaction Sets, each transaction set control number will not be duplicated within the same interchange (ISA to IEA).

7 North Dakota Medicaid Specific Business Rules and Limitations

Many of the data elements detailed in this Companion Guide reflect North Dakota business requirements, but still meet the standard requirements in the ASC X12N TR3. Inclusion of a “business-required” data field, as defined by this Companion Guide, will aid in the delivery of a positive response from the North Dakota Health Enterprise MMIS. For more information regarding North Dakota specific billing requirements, consult the applicable ND Medicaid provider billing manual, which can be downloaded from the North Dakota Medicaid Web site at: <http://www.nd.gov/dhs>

Note on decimal/amount fields: Even though the X12N transaction defines Amount fields as having an 18-byte maximum, there is an additional HIPAA rule that limits all decimal fields to a maximum of 10 characters, including the two implied or reported decimal places. Accordingly, for all decimal or amount fields:

- “123456789012” is not an acceptable amount, because it is greater than 10 bytes.
- “12345678.90” is acceptable because the number of digits is not greater than 10; the decimal point itself is not limited by the rule.
- However, “1234567890” is not acceptable because the X12N engine assumes that a decimal point and succeeding zeroes are implied so that the actual number being communicated is “1234567890.00”, which is greater than 10 bytes.
- The 10-byte limitation applies to all decimal or amount fields, including AMT segments, but also including any other fields that hold amounts or decimals, such as 837 SV207, CAS03, CAS06, CAS09, CAS12, CAS15, CAS18, HI01-5, HI02-5, HCP02 and HCP03, etc.

For all fields not listed in these bullets, follow the guidelines in the ASC X12N Electronic Data Interchange Technical Report Type 3 (TR3), available at <http://store.x12.org/store/healthcare-5010-consolidated-guides>

8 Acknowledgements and/or Reports

Transmission Errors and Reports

The 835 is an outbound transaction, so North Dakota Trading Partners will not receive any acknowledgements or reports.

9 Trading Partner Agreements

Prior to engaging in EDI with the North Dakota MMIS Enterprise, prospective Trading Partners must complete a Trading Partner enrollment package, which includes a Trading Partner Signature Agreement Form that requires an original signature. Please follow all enrollment instructions and mail the signed Trading Partner Agreement Form to ND Medicaid, along with any other required documents to complete the enrollment application process.

Please find all North Dakota Provider/Trading Partner Enrollment information at: <https://mmis.nd.gov/portals/wps/portal/ProviderEnrollment>

The mailing address is:

North Dakota Department of Human Services
Attn: Customer Service
600 East Boulevard Avenue, Dept 325
Bismarck, ND 58505-0250

Trading Partners

In simple terms, an EDI Trading Partner is defined as any provider or agent acting on behalf of a provider that transmits electronic transaction data to or receives electronic transaction data from a health plan.

There are two different types of Trading Partners for the North Dakota Medicaid:

First, there are Vendors, Billing Agents, Clearinghouses and Switch Vendors who engage in Electronic Data Interchange (EDI) which may include claims and eligibility inquiries on behalf of enrolled ND Title XIX providers. These Trading Partners are not enrolled providers, their only interaction with the MMIS is to submit and retrieve electronic data files.

Second, there are providers re-enrolling under the Title XIX Program who use their own software programs to engage in Electronic Data Interchange (EDI) with the North Dakota Medicaid. Some providers may use the MMIS online file upload and retrieval features via the North Dakota MMIS Health Enterprise Portal.

10 Transaction Specific Information

This section contains data clarifications, including North Dakota-specific data requirements. For additional guidance on the use of business rules, please see [Section 7 North Dakota Medicaid Specific Business Rules and Limitations](#)

ASC X12N 835 Health Care Claim Payment/Advice

TR3 Page	Loop ID	Reference	Name	Codes	Length	Notes/Comments
C.3	N/A	ISA	Interchange Control Header			
C.4	N/A	ISA05	Interchange ID Qualifier	ZZ		
C.4	N/A	ISA06	Interchange Sender ID	NDDHS MED		
C.5	N/A	ISA07	Interchange ID Qualifier	ZZ		
C.5	N/A	ISA08	Interchange Receiver ID			Trading Partner ID assigned by North Dakota Medicaid
C.7	N/A	GS	Functional Group Header			
C.7	N/A	GS02	Application Sender's Code	NDDHS MED		

TR3 Page	Loop ID	Reference	Name	Codes	Length	Notes/Comments
C.7	N/A	GS03	Application Receiver's Code			Trading Partner ID assigned by North Dakota Medicaid
69	N/A	BPR	Financial Information			
70	N/A	BPR01	Transaction Handling Code	H, I		
71	N/A	BPR02	Monetary Amount			This element is used to associate the ERA to the CCD+EFT data element Record #6, Field #6, "Amount".
72	N/A	BPR04	Payment Method Code	ACH, CHK, NON		
72	N/A	BPR05	Payment Format Code			If BPR04 = ACH, value is CCP
73	N/A	BPR06	(DFI) ID Number Qualifier			If BPR04=ACH, value is 01
74	N/A	BPR10	Originating Company Identifier			If BPR04 = ACH, value is NDDHSMED
75	N/A	BPR12	(DFI) Id Number Qualifier			If BPR04 = ACH, value is 01
76	N/A	BPR14	Account Number Qualifier			If BPR04 = ACH, value is DA

TR3 Page	Loop ID	Reference	Name	Codes	Length	Notes/Comments
76	N/A	BPR16	Date			This element is used to associate the ERA to the CCD+EFT data element Record #5, Field #9, "Effective Entry Date".
77	N/A	TRN	Reassociation Trace Number			
77	N/A	TRN02	Reference Identification			North Dakota Medicaid will populate with the Remittance Advice Number. This element is used to associate the ERA to the CCD+EFT data element Record #7, Field #3, "Payment Related Information".
78	N/A	TRN03	Originating Company Identifier			NDDHSMED This element is used to associate the ERA to the CCD+EFT data element Record #7, Field #3, "Payment Related Information".
82	N/A	REF	Receiver Identification			
82	N/A	REF02	Reference Identification			North Dakota Assigned Trading Partner ID
87	1000A	N1	Payer Identification			
87	1000A	N102	Name			ND Medicaid

TR3 Page	Loop ID	Reference	Name	Codes	Length	Notes/Comments
94	1000A	PER	Payer Business Contact Information			
95	1000A	PER02	Name	ND Customer Service Unit		
95	1000A	PER03	Communication Number Qualifier	TE		
95	1000A	PER04	Communication Number	(800) 755-2604		
96	1000A	PER05	Communication Number Qualifier	EM		
96	1000A	PER06	Communication Number	NDMMI@ND.GOV		
97	1000A	PER	Payer Technical Contact Information			
98	1000A	PER02	Name	ND Customer Service Unit		
98	1000A	PER03	Communication Number Qualifier	TE		

TR3 Page	Loop ID	Reference	Name	Codes	Length	Notes/Comments
98	1000A	PER04	Communication Number	(800) 755- 2604		
98	1000A	PER05	Communication Number Qualifier	EM		
99	1000A	PER06	Communication Number	NDMMI@ND.GOV		
102	1000B	N1	Payee Identification			
103	1000B	N103	Identification Code Qualifier	XX, FI		
107	1000B	REF	Payee Additional Identification			
107	1000B	REF01	Reference Identification Qualifier			If N103 = XX, value is TJ
123	2100	CLP	Claim Payment Information			
124	2100	CLP02	Claim Status Code	1, 2, 3, 4, 22		
126	2100	CLP06	Claim Filing Indicator Code	MC		
137	2100	NM1	Patient Name			

TR3 Page	Loop ID	Reference	Name	Codes	Length	Notes/Comments
139	2100	NM108	Identification Code Qualifier	MI		
139	2100	NM109	Identification Code			ND Medicaid Member ID
153	2100	NM1	Corrected Priority Payer Name			
154	2100	NM108	Identification Code Qualifier	PI		
154	2100	NM109	Identification Code			The 10 digit Carrier Code assigned by ND Medicaid is sent when ND Medicaid has priority payers on the file and the claim does not indicate that the priority payer has processed it yet.
156	2100	NM1	Other Subscriber Name			
158	2100	NM108	Identification Code Qualifier	MI		
158	2100	NM109	Identification Code			Other Subscriber Insurance Policy ID will be sent if Corrected Priority Payer Name (NM109) is sent
182	2100	AMT	Claim Supplemental Information			

TR3 Page	Loop ID	Reference	Name	Codes	Length	Notes/Comments
182	2100	AMT01	Amount Qualifier Code	AU		
217	N/A	PLB	Provider Adjustment			
219	N/A	PLB03-1	Adjustment Reason Code	90, E3, GO, IR, LS, PL		

Appendices

Implementation Checklist

The North Dakota Customer Service Unit assists new Trading Partners with enrollment and testing. The following checklist will help trading partners to begin exchanging information with ND Medicaid.

Trading Partner Checklist			
	Task	Responsibility	Completed Date
<input type="checkbox"/>	Review Trading Partner Enrollment Toolkit at: http://www.nd.gov/dhs/info/mmis.html	Trading Partner	
<input type="checkbox"/>	Enroll in the new MMIS as a Trading Partner at: https://mmis.nd.gov/portals/wps/portal/ProviderEnrollment	Trading Partner and ND Medicaid	
<input type="checkbox"/>	Exchange Contact information for Business, Technical and/or Data contacts. (Name, Phone number, Email address and Mailing Address)	Trading Partner and ND Medicaid	
<input type="checkbox"/>	Confirm X12 Transaction selections	Trading Partner and ND Medicaid	
<input type="checkbox"/>	Establish Standard ISA and GS information	Trading Partner and ND Medicaid	
<input type="checkbox"/>	Determine communication method	Trading Partner and ND Medicaid	
<input type="checkbox"/>	Establish a schedule for testing	Trading Partner and ND	

		Medicaid	
<input type="checkbox"/>	Complete the testing for all selected X12 Transactions	Trading Partner and ND Medicaid	
<input type="checkbox"/>	Promote Trading Partner to Production status	Trading Partner and ND Medicaid	
<input type="checkbox"/>	Production cut-over	ND Medicaid	
<input type="checkbox"/>	Begin sending X12 transactions to new MMIS for processing	Trading Partner	

Business Scenarios

Please contact the ND Customer Service Unit to discuss your specific EDI related business needs with ND Medicaid, should they not be covered in this guide or other available ND Medicaid X12N transaction companion guides.

Transmission Examples

Please contact the ND Customer Service Unit for any question regarding transmission/retrieval examples.

Frequently Asked Questions

For current Provider and Trading Partner FAQs, please visit the following page:
<https://mmis.nd.gov/portals/wps/portal/ProviderFaq>

Change Summary

Version	Date	Description	Description of Changes
1.0	03/12/2014	Initial Document for Deliverables	Document reformatted to meet CAQH CORE standard companion guide format (Phase I CORE Req. 152).
1.1	10/26/2014	Change ND ID	Change ND ID from ND00994 to NDDHSMED
1.2	05/25/2017	Updates related to HIPAA Operating Rules requirements	Added information pertaining to: (1) System Availability, (2) ERA and CCD+ Reconciliation