

BEST IN CLASS

Quality Early Childhood Experiences for children in the year before kindergarten



**This meeting
is being
recorded and
may be
viewed by the
public online.**



BEST IN CLASS

Quality Early Childhood Experiences for children in the year before kindergarten



Purpose:

Best in Class was Authorized in HB 1466 during the 2021 North Dakota Legislative Session to offer high quality early childhood experiences to the most vulnerable children the year before Kindergarten.

Model:

Is based on over 25 years of research.

Represents a targeted investment in families to provide quality early childhood experiences.

2022-2023 BEST IN CLASS PROGRAMS

Where are they?

2022-2023

38 programs

50 classrooms



BEST IN CLASS PROGRAM

Quality early childhood experiences for children in the year before they enter kindergarten

Program Expectations:

Enrollment

- Group size 18 (17-20) or 9 (8-10)
- 4yrs. before Aug. 1st

Enroll 50% of classroom group size with:

- Student Information Form (parent packet)
- Children whose household income is 60% of the State Median Income or less
- Children with an identified delay or disability

Operating Schedule:

- Operate for at least 400 hours over a period of at least 32 consecutive weeks. Programs operating at least 832 hours over 32 consecutive weeks are desired.

BEST IN CLASS PROGRAM

Quality early childhood experiences for children in the year before they enter kindergarten

Program Expectations:

Budget

- Business Manager Meeting – Sept. 7th 1:00 pm CT
- Submit Preliminary budget by Sept. 15th
- Grant award matched with cash match or in-kind match equal to 16.6666% of total grant reimbursement

Allowable Use of Funds

- Reference Program Description
- Administrative / Indirect Cost this year (up to 10% of each reimbursement form)
- Stipends for teachers is an option for added time commitment
- SFN 1763 Request for Reimbursement
 - Submit quarterly for reimbursement (July-Sept.30, Oct.-Dec. 30, Jan.-March 30, Apr.-June 30)

Charging tuition - must use sliding fee scale (aligns with Student Information Form)

- Excel Spreadsheet- Sliding Fee Scale
- Tuition fees received can be used as cash match

BEST IN CLASS PROGRAM

Quality early childhood experiences for children in the year before they enter kindergarten

Program Expectations:

Screenings & Referrals (completed within 90 days from first day of pre-school)

- Physical
- Dental
- Vision
- Hearing
- Developmental Screening
- Health Screening Permission Form (parent packet)
 - Completed and held onsite

Family engagement (minimum 10 hours per family)

- Ready Rosie
- Waterford Upstart
- Others
- Family Engagement Permission Form (parent packet)
 - Completed and held onsite

BEST IN CLASS PROGRAM

Quality early childhood experiences for children in the year before they enter kindergarten

Program Expectations:

STARS (DPI state automated reporting system) - Steve Frank (fsnow@nd.gov)

- Manual will be provided
- Child's State ID

Monitor – Lakes & Prairies Community Action Partnership (CAPLP)

- Quarterly visits - Virtual or Onsite
- Documents to be reviewed for compliance
 - Health Screening Permission Form
 - Child Health Screening Record
 - Family Engagement Permission Form
 - Student Information Form
 - Enrollment

Health Specialist-SEEC

- Health and safety visits/observation
- Quarterly visits – Virtual or Onsite
 - Health & Safety Self-Assessment Checklist
 - Health & Safety Recommendations

BEST IN CLASS PROGRAM

Quality early childhood experiences for children in the year before they enter kindergarten

Coaches support teaching staff throughout their participation in Best in Class

- Provide ongoing virtual and/or on-site coaching at least monthly
- Environment
 - BIC Environment Self-Assessment
 - BIC Environment Standards
 - Vendor partnerships with Lakeshore and Kaplan
- Teaching Strategies Curriculum & Assessment:
 - Implement a research-based curriculum
 - Must use Teaching Strategies GOLD for ongoing observation and assessment under NDDHS Teaching Strategies license.



TeachingStrategies®



NORTH
Dakota
Be Legendary.™

Human Services

The Creative Curriculum®

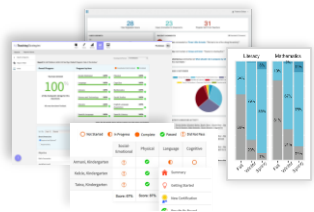
The Creative Curriculum® Cloud

Professional Development



GOLD®

 **ReadyRosie**
FAMILY



2022-23 Professional Development Implementation Timeline

August

- The Creative Curriculum® for Preschool - Guided Edition delivered to 1st year participants & AI's Pals kit delivered to 2nd year participants
- Programs setup classrooms & gain access to The Creative Curriculum® Cloud & ReadyRosie

September

- Sept. 9th 8:30-3:00 – Year 1 Participants & para: Getting Started with Teaching Strategies® for Preschool
- Sept. 15th 3:00-4:00 CT Year 1 Participants Ready Rosie
- Sept 30th - Programs invite families to ReadyRosie®

October

- Oct. 7th 8:30-3:00 CT - Year 1 Participants & para: Focus on Assessment
- Oct. 14th 9:00-3:30 CT - Year 2 Participants: AI's Pals Social/Emotional Curriculum

November

- Nov. 15th- Year 1 Participants: Pass Interrater Reliability
- Nov. 18th 9:00-3:30 CT – Year 2 Participants: Noni
- Nov. 30th - Programs complete Fall Checkpoint

December
January

February
March

- February 28 - Programs complete Winter Checkpoint

April
May

- May 31st- Programs complete Spring Checkpoint

BEST IN CLASS PROGRAM

Quality early childhood experiences for children in the year before they enter kindergarten

Next Steps:

- Current BIC participants – Submit final Reimbursement (by July 30th)
- Contracts
- Printed Teaching Strategies Kits - Notice of Shipment will be emailed
- STARS (state automated reporting system)
 - Manual will be provided – State Identifier
- Creating Teaching Strategies Accounts
 - **Admin New to Teaching Strategies - Aug.23rd 9:30-10:30 AM CT**
 - **Returning Programs/Admin - End-of-Year/Back-to-School Checklist for GOLD & The Creative Curriculum Cloud Administrators** (email from coaches)
- Schedule Screenings
- Student Information Forms (Parent Packet)
- Teacher Kick Off Meetings – August 15th

N O R T H
Dakota | Human Services
Be Legendary.™

Shonda Wild, Best in Class Program Administrator

swild@nd.gov | 701-328-1980

Shannon Brown, Best in Class Coach

smbrown@nd.gov

Tasha Lind, Best in Class Coach

tlind@nd.gov