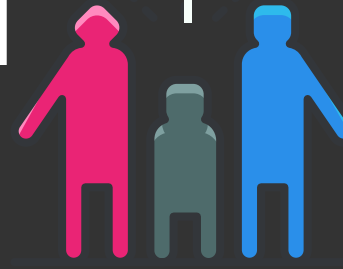


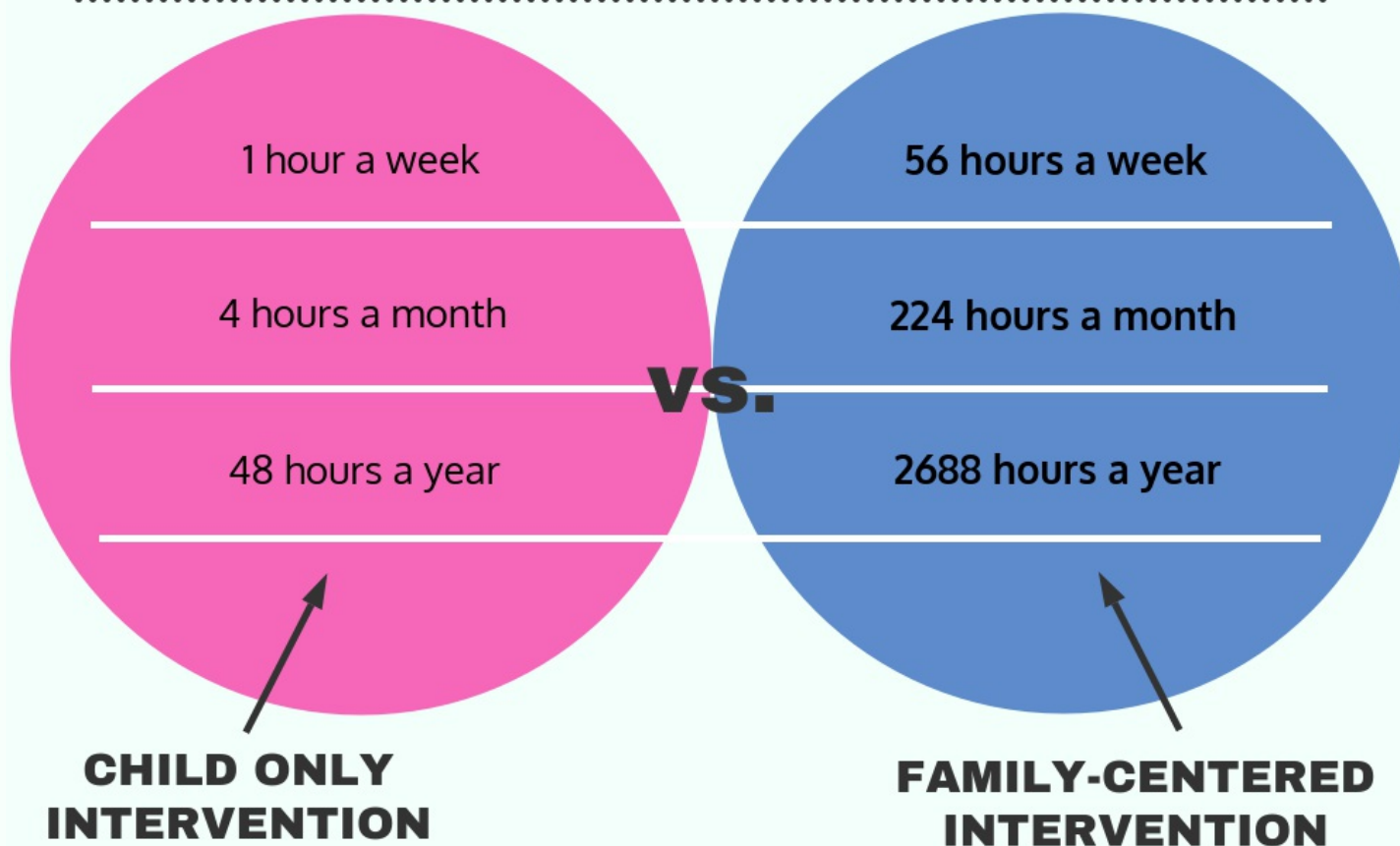
Family-Centered PRACTICES



Family-Centered Intervention

In Early Intervention, it is what happens in between home visits that matters...

HOURS OF SERVICE



Fettig, 2016; McWilliam, 2000

Reflection: Putting it into Practice

The *family* is the center of the services provided for the child.

Service Coordinator Reflection:

Are you helping families understand that from the beginning to the end of early intervention, adult caregivers are going to be actively involved?

Early Interventionists Reflection:

On your visits, pay attention to how much you really collaborate with the parent. Are you doing most of the talking and the work during the visit, or are you sharing the conversation and collaborating to support parent-child interaction? Does the parent talk at least as much as you do?

Caregiver Reflection:

Are you talking as much or more than the early interventionist during your scheduled visits?

Services vary from family to family because of differences in strengths and needs among the families.

Family centered practices are designed to meet the strengths and needs of both the *child* and the *family*.