



House Bill 1004

Healthy and Safe Communities Section

Kim Mertz, Section Director

Department of Health and Human Services

Public Health Division | January 17, 2023

NORTH
Dakota
Be Legendary.

Health & Human Services

Healthy & Safe Communities Section

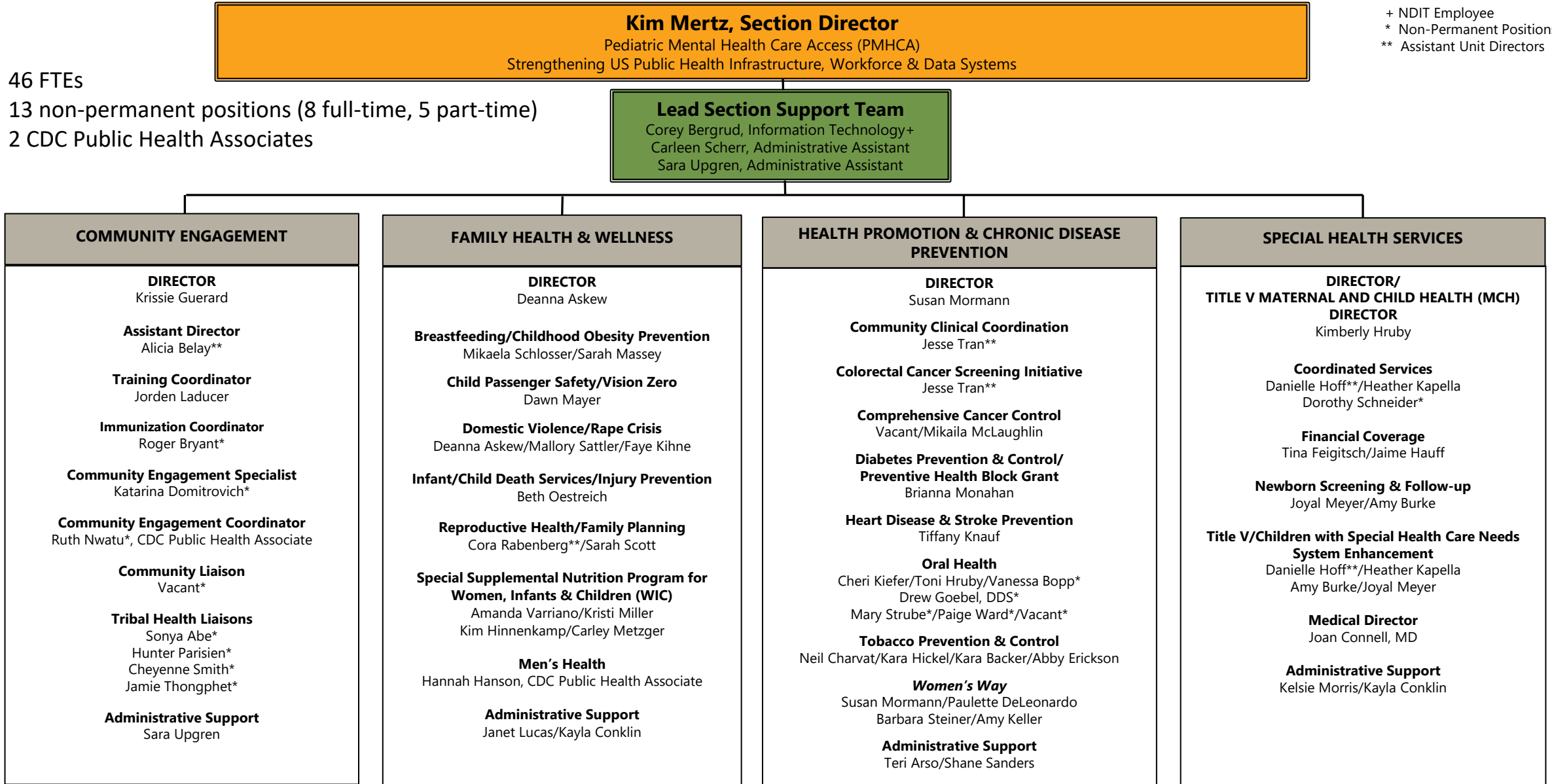
Mission: The purpose of the Healthy & Safe Communities Section is to support individuals, families and communities by providing quality preventive programs and services that equitably protect and enhance the health and safety of all North Dakotans.

Organizational Chart

January 2023

46 FTEs
13 non-permanent positions (8 full-time, 5 part-time)
2 CDC Public Health Associates

+ NDIT Employee
* Non-Permanent Positions
** Assistant Unit Directors



Healthy and Safe Communities Section

Support individuals, families and communities by providing quality preventive programs and services that equitably protect and enhance the health and safety of all North Dakotans.

COMMUNITY ENGAGEMENT

Krissie Guerard

- Works alongside North Dakota communities in addressing health-related needs to reduce disease rates by providing opportunities for interventions and improving access to health care; thereby, ensuring all North Dakotans have the ability to reach their optimal health.

FAMILY HEALTH & WELLNESS

Deanna Askew

- Works collaboratively on evidence-based initiatives that promote healthy, safe and active North Dakotans at every stage of life and the environments that support them.

HEALTH PROMOTION & CHRONIC DISEASE PREVENTION

Susan Mormann

- Promotes and improves health at every stage of life through evidence-based and culturally reflective strategies that prevent and manage chronic disease.

SPECIAL HEALTH SERVICES

Kimberly Hruby

- Promotes a system of care and services that improves the health and well-being of individuals with special health care needs and their families.

Improving the lives of North Dakotans

How legislative support and appropriations made an impact in the **2021-2023 biennium.**





“

“Not all individuals have a car or money to go to a blood donation site. It was great to host an event that benefited the community (with the huge blood shortage) and individuals on campus to have an easy and convenient opportunity to donate blood if they so wished.”

- Shaena Richard, Health Equity Ambassador

Community Engagement

- Tribal Health Liaisons ↔ Trusted Relationships
- Quarterly Tribal Health Director’s Meetings
- Contracts with Tribal Nations/urban American Indian community-based organizations totaling over \$550,000 to assist with COVID-19 mitigation efforts, development of culturally relevant health information, etc.
- Over 160 Collaborative Partnerships
- Advisory Boards
- Presentations/Trainings
- Health Equity Ambassador Program

Family Health and Wellness



Breastfeeding/Obesity Prevention

158 businesses are Infant Friendly Workplaces; impacting over 43,000 employees.



Child Passenger Safety

Distributed 347 car seats to low-income families and inspected 555 child restraints.



Injury Prevention/Child Passenger Safety

- Almost 2,000 cribs were distributed to families to provide a safe sleep environment for infants.
- 5,728 calls to the Poison Hotline in 2021.



Reproductive Health

Provided services to 3,777 women and 973 men in 2021.



Men's Health

New program: collaborations, webinar series, PRAMS for Dads.



WIC

Served 16,016 participants including 5,016 infants in 2021.

NORTH
DAKOTA

DOMESTIC VIOLENCE FACTS 2021

5,417 ^{*New}
Victims

were served by
18 CRISIS INTERVENTION
CENTERS
throughout North Dakota.

OF
THOSE
CASES:

- 87% of the victims were women.
- 94 women were pregnant at the time they were assaulted.
- 18% of new victims were people with disabilities.
- At least 3,895 children were directly impacted by these incidents.

A CLOSER LOOK

At least **66%** of victims served were physically abused.

Weapons were used in at least **13%** of the cases identified. Guns were used in **18%** of the cases and knives were used in **16%** of the cases involving weapons.

In at least **39%** of cases, the abuser had a history of abusive behavior with other adults including prior partners.

Alcohol use by abuser only was indicated in **28%** of the new cases. Alcohol use by both victim and offender was indicated in **5%** of the cases.

NORTH
DAKOTA

SEXUAL ASSAULT FACTS 2021

1,139 Primary
Victims
+292 Secondary
Victims

were served by
18 SEXUAL ASSAULT
CRISIS CENTERS
throughout North Dakota.

OF
THOSE
CASES:

- At least 933 victims were female.
- 59% of cases were male assailants (752), a female victim.
- 174 assailants were female.
- 4% of cases were male assailants, a male victim.

A CLOSER LOOK

At least **298** of primary victims were under the age of 18 years old at the time of the assault(s).

In adult cases, **9%** of the assailants were strangers. In child cases, **3%** of the assailants were strangers.

In at least **29%** of all cases, the assailant was a friend/acquaintance/date of the victim.

At least **32%** of the assaults occurred in the victim's or assailant's home.

28% of new victims were people with disabilities. Of those, **18%** were people with developmental disabilities. **23%** had physical disabilities and **59%** were people with mental health disabilities.

**new - unduplicated for calendar year*

Health Promotion and Chronic Disease Prevention



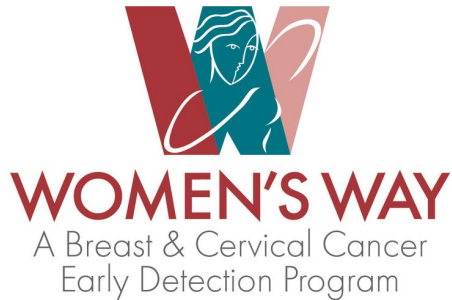
Comprehensive Cancer/Colorectal Cancer Prevention

- 19 facilities are included in the Colorectal Cancer Screening Initiative provider network.



Diabetes and Heart Disease/Stroke Prevention Pharmacy Services Pilot

- 658 patients screened for hypertension
- 578 patients screened for prediabetes
- 1,144 patients screened for immunizations
- 382 medication therapy management consultations were held with patients, and 587 drug therapy problems were identified.



Women's Way

- From July 1, 2021 - November 30, 2022, assisted nearly 1,250 women complete breast and/or cervical cancer screenings.

Oral Health

Medical-Dental Integration

- Completed 1,385 dental screenings at the UND CFM
- Of those screenings, 22% had NEVER visited a dental office



Tobacco Prevention and Control

- More on this later

Special Health Services

Coordinated Services

- Served 1,939 children with special health care needs and their families.

Financial Coverage

- Helped families pay for medical services for 521 eligible children, including health care visits and tests to diagnose chronic health conditions early and specialty care needed for treatment.

Newborn Screening and Follow-up

- Screened 11,709 infants.
- Started long-term follow-up.

System Enhancement

- Multidisciplinary clinics served over 1,200 children and families.

Note: All data is from 2021



53 disorders are included in North Dakota's newborn screening panel

Healthy and Safe Communities Programs - Making a Difference in North Dakotan's Lives!



WIC

Helps eligible pregnant women, new mothers, babies and young children eat well, learn about nutrition and stay healthy.

"I couldn't believe the amount of help and support I received from WIC in being to continue breastfeeding..... They frequently checked in on me..... and were very nonjudgmental....."



Women's Way

Provides a way to pay for breast and cervical cancer screenings for eligible North Dakota women.

"I noticed dimpling.....and, because of Women's Way, I knew that was a bad sign..... They were able to find cancer at stage zero..."



Multidisciplinary Clinics

Provides access to pediatric specialty care and enables families to see different health care professionals in one place at one time.

"This is one of the best experiences I've had at a doctor's appointment with my son. The staff is amazing."

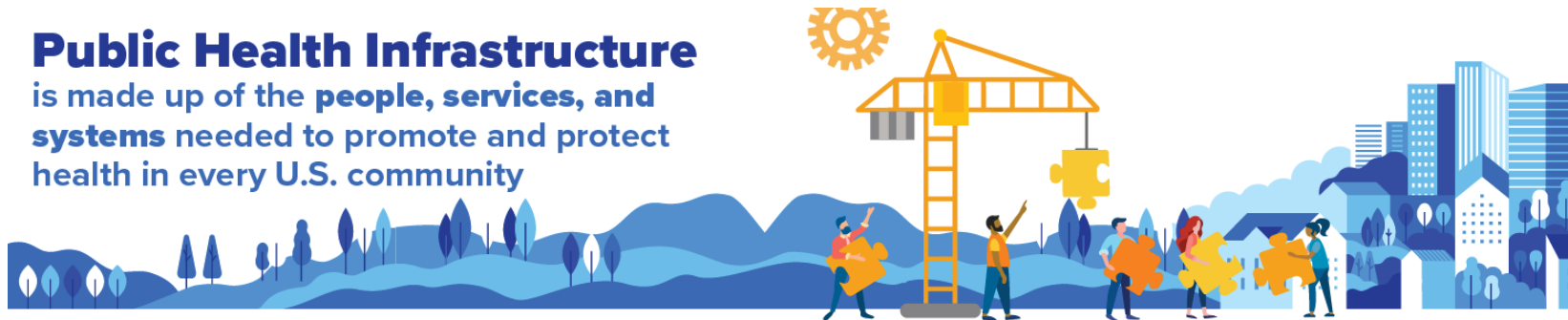
ND Medicaid offers 12 months of coverage for moms.

Act before your baby is born.

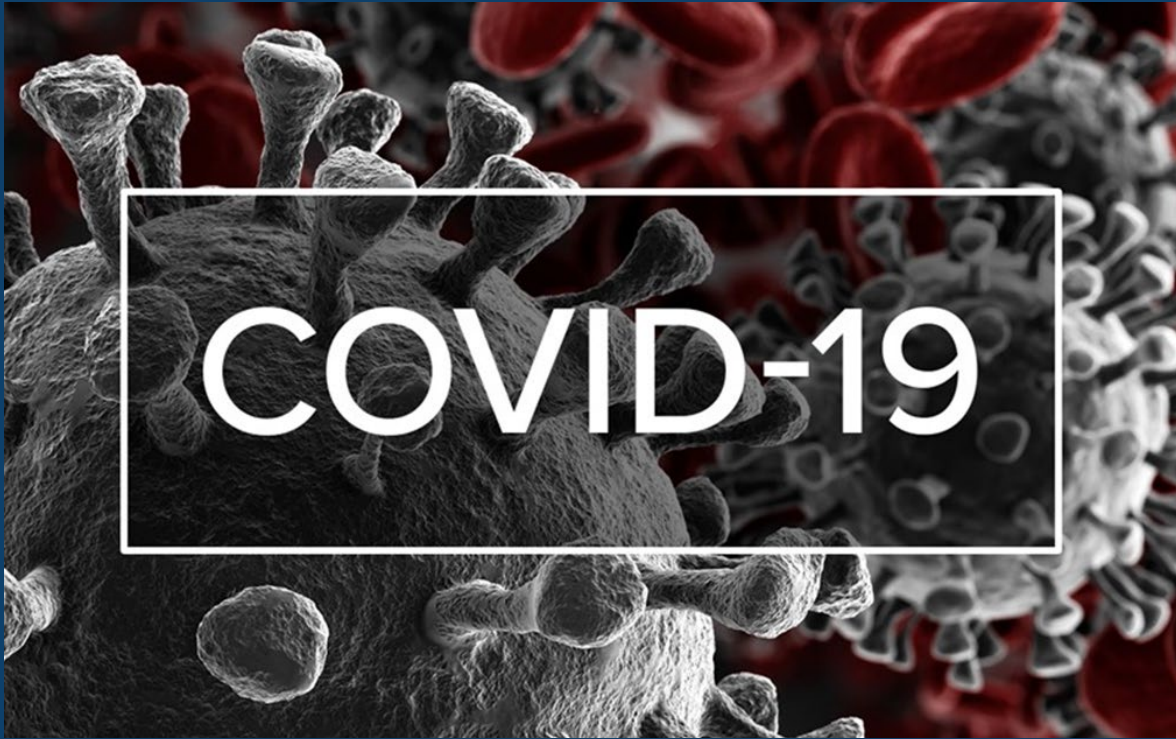
Tell your human service zone right away when you become pregnant so you can receive this coverage.



Public Health Infrastructure is made up of the **people, services, and systems** needed to promote and protect health in every U.S. community



And so much more!



COVID-19 Hotline | 131,941 calls

March 12, 2020 – December 30, 2022

Additional Work Efforts:

- Case Work
- Data Entry
- Email Response
- Grant Writing
- Homeless Committee
- ND Smart Restart
- School Response
- Unified Command

Strategies Driving Budget



Data and Evidence-based Decision Making

Core Public Health Functions

10 Essential Public Health Services



Community Engagement

Social Determinates of Health



Policy, Systems and Environmental Changes

Designed to Promote Healthy Behaviors by Making Healthy Choices Readily Available and Easily Accessible.

Key Strategies to Achieve the Goal of Making North Dakota the Healthiest State in the Nation!

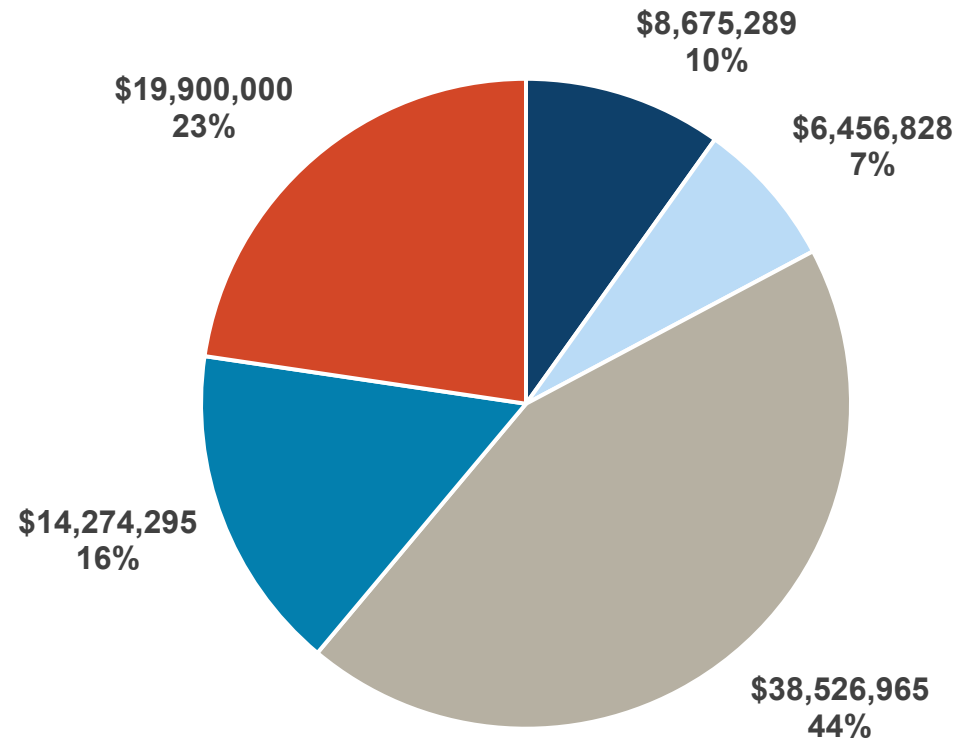


2023-2025 Budget request

**The program, systems and
workforce support
necessary to continue to
serve North Dakotans**

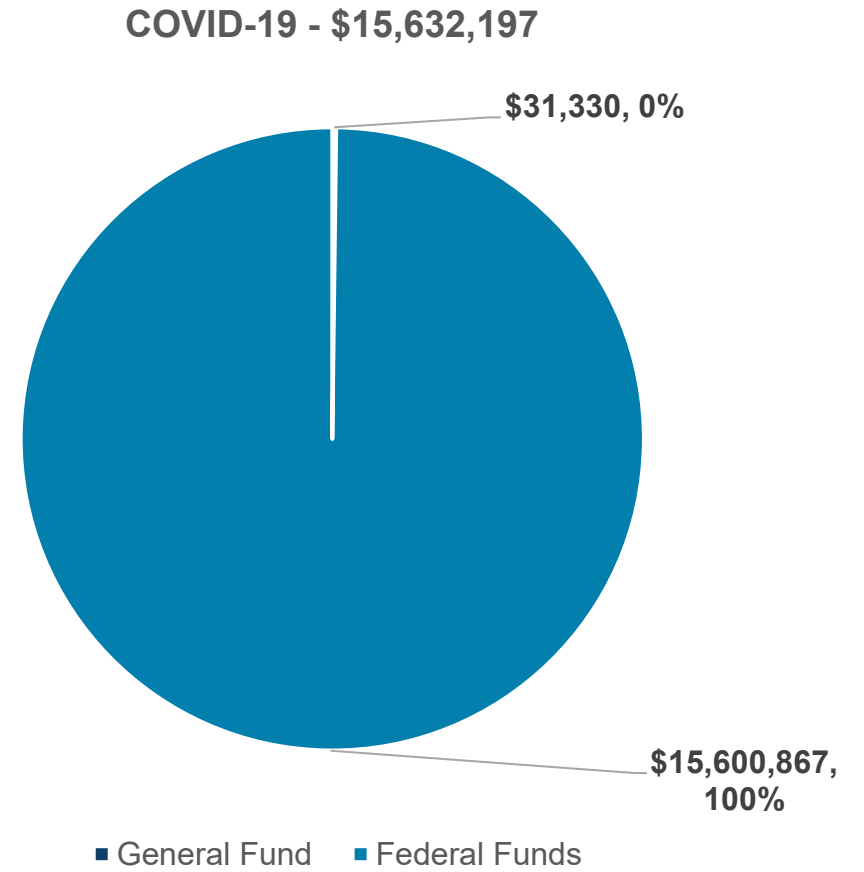
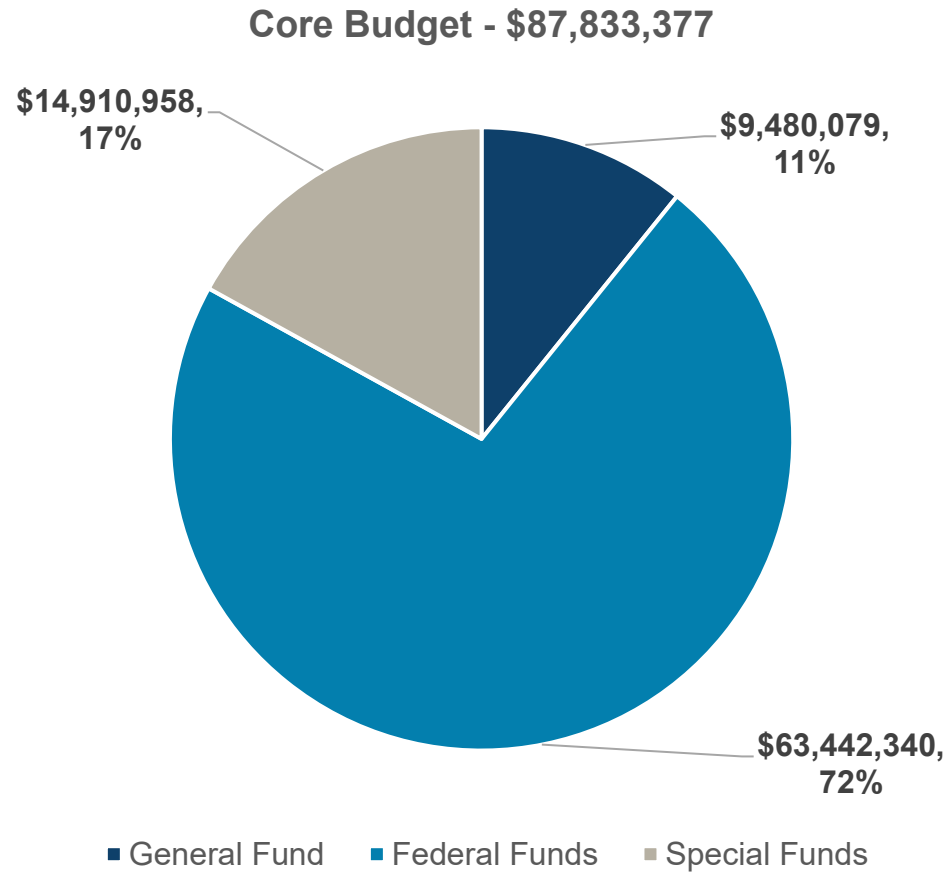
2023-25 Executive Recommendation

Core Budget By Line Item



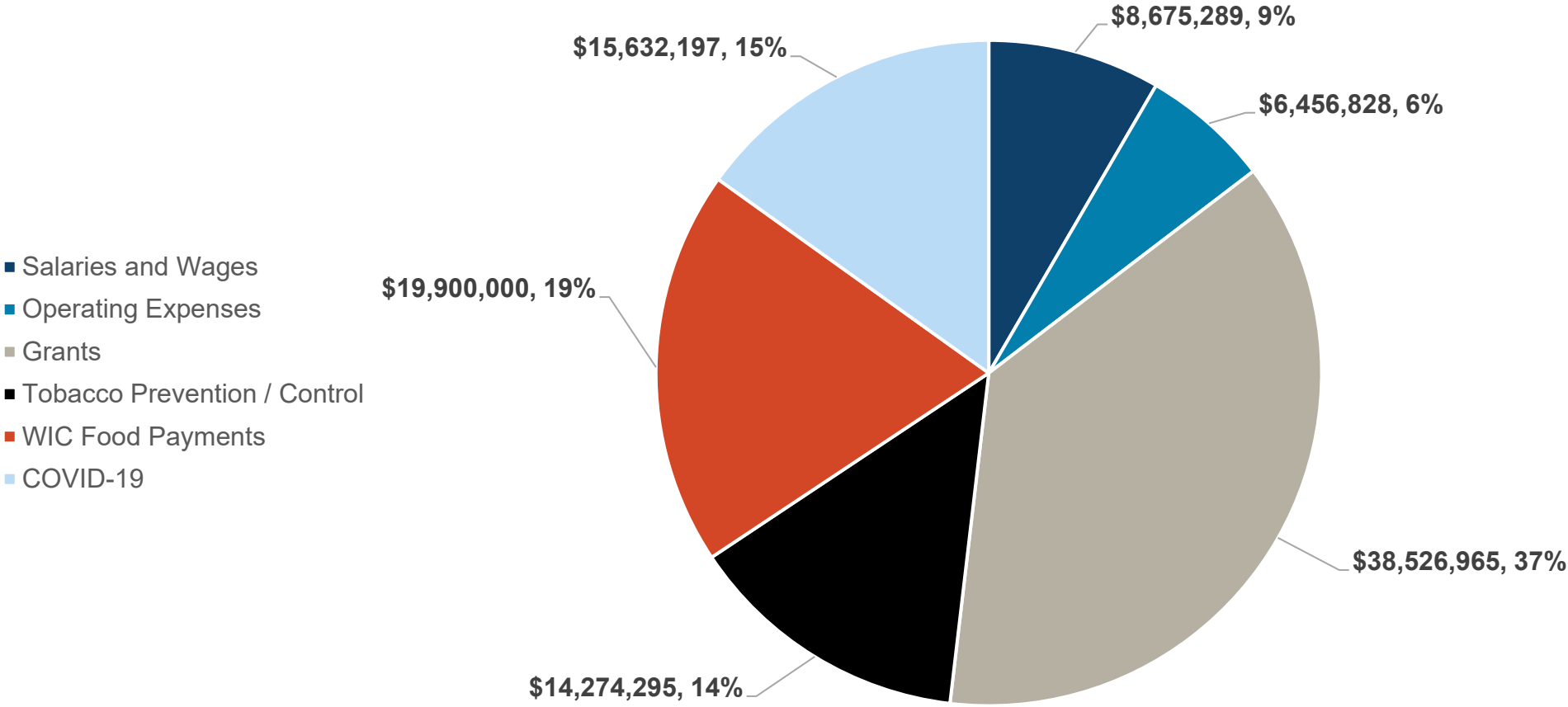
■ Salaries and Wages ■ Operating Expenses ■ Grants ■ Tobacco Prevention / Control ■ WIC Food Payments

2023-25 Executive Recommendation By Funding Source



2023-25 Executive Recommendation

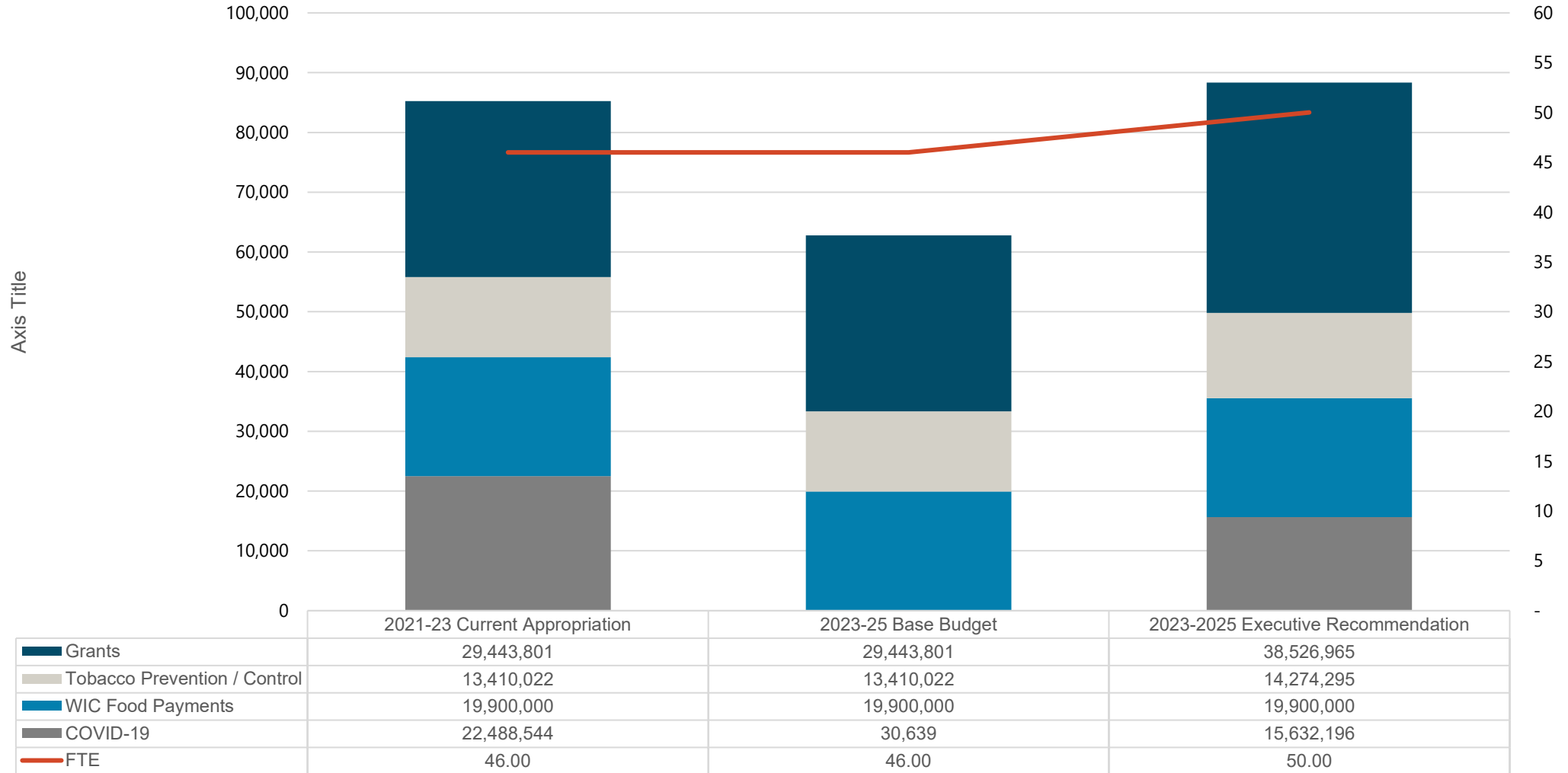
By Line Item



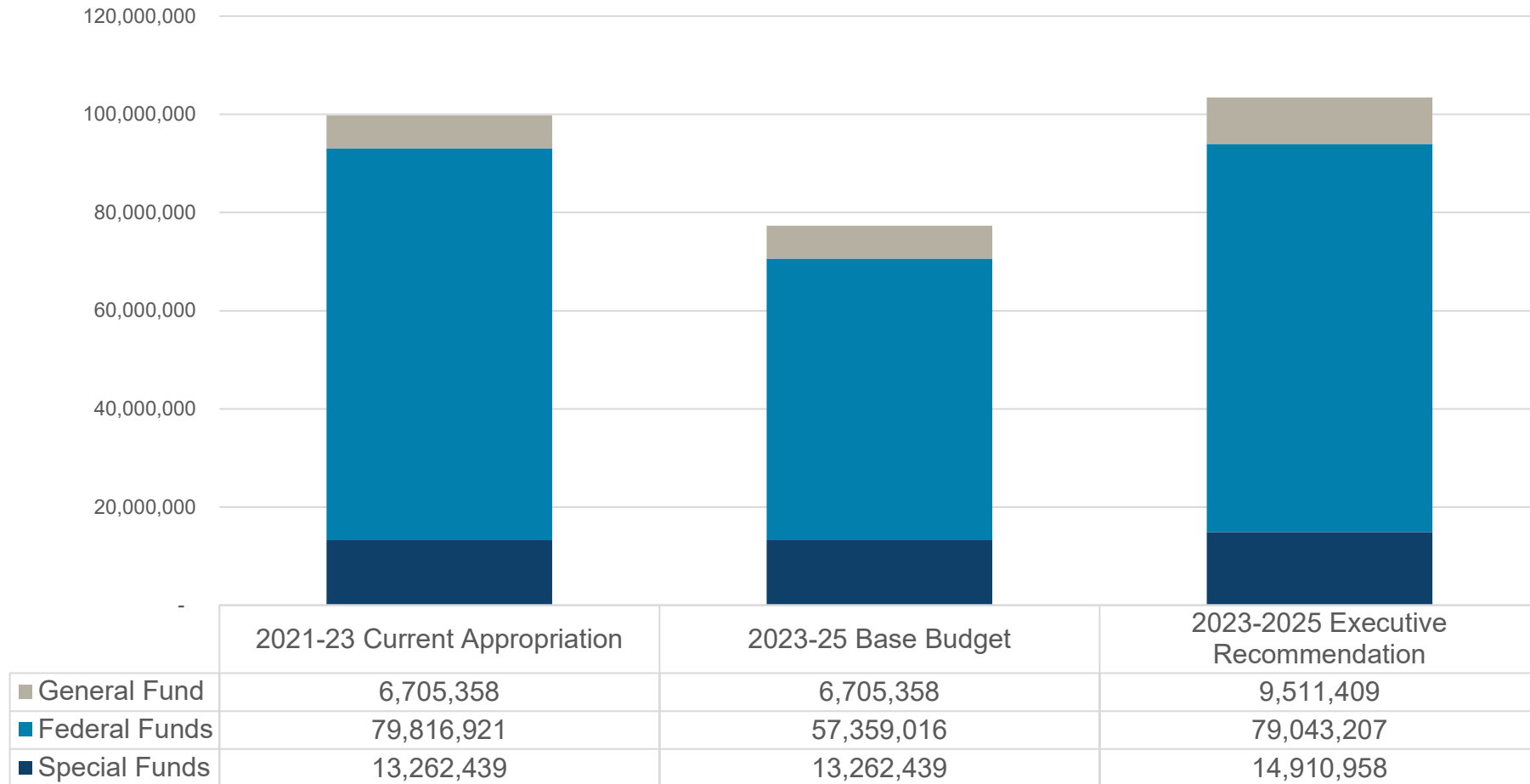
Comparison

Description	2021-23 Current Appropriation	2023-25 Base Budget	Increase/ (Decrease)	2023-25 Executive Rec.
Salaries and Wages	7,672,364	7,672,364	1,002,926	8,675,290
Operating Expenses	6,869,987	6,869,987	(413,159)	6,456,828
Grants	29,443,801	29,443,801	9,083,164	38,526,965
Tobacco Prevention/Control	13,410,022	13,410,022	864,273	14,274,295
WIC Food Payments	19,900,000	19,900,000	0	19,900,000
COVID-19	22,488,544	30,639	15,601,557	15,632,196
FTE	46.0	46.0	4.0	50.0

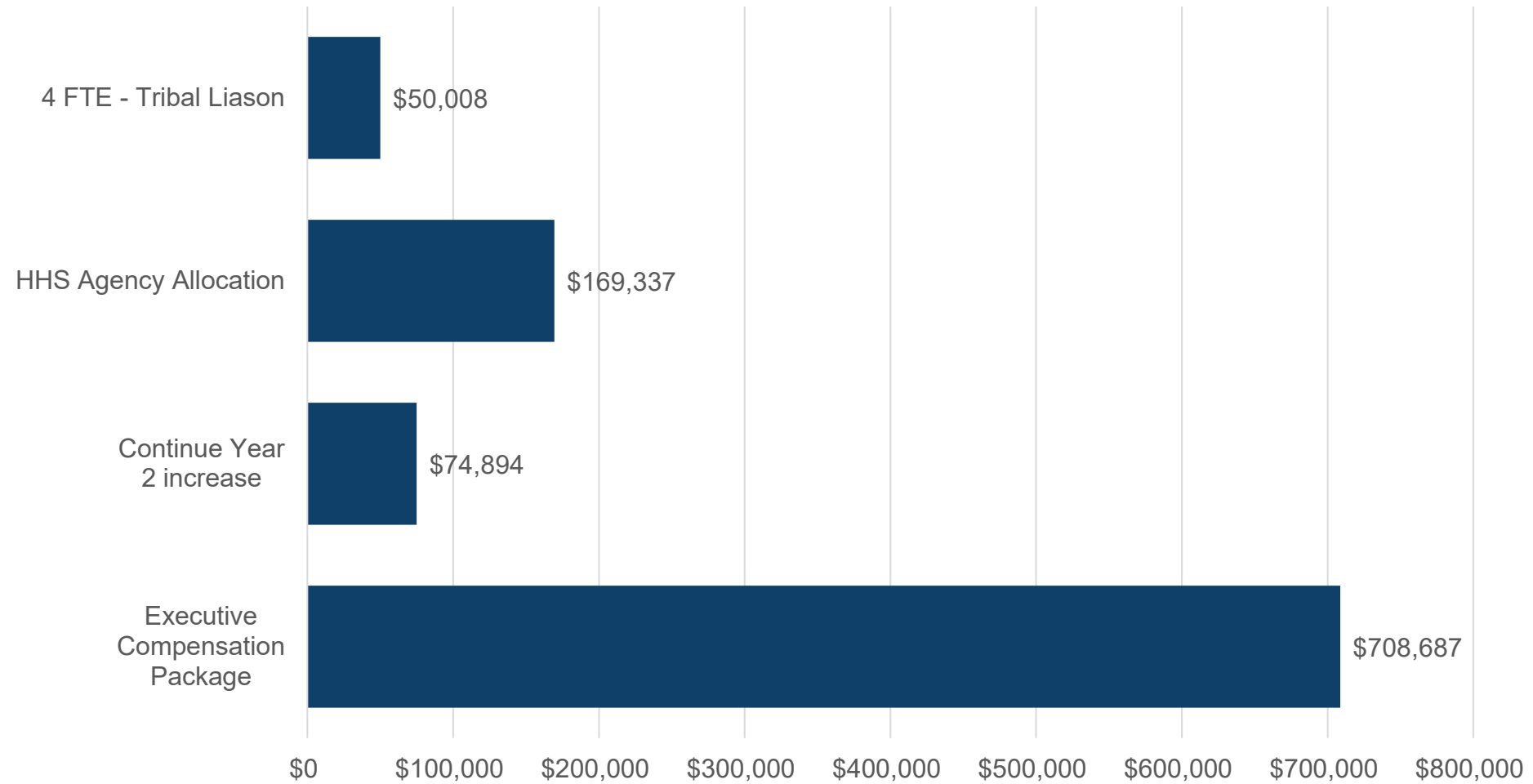
Overview of Budget Changes



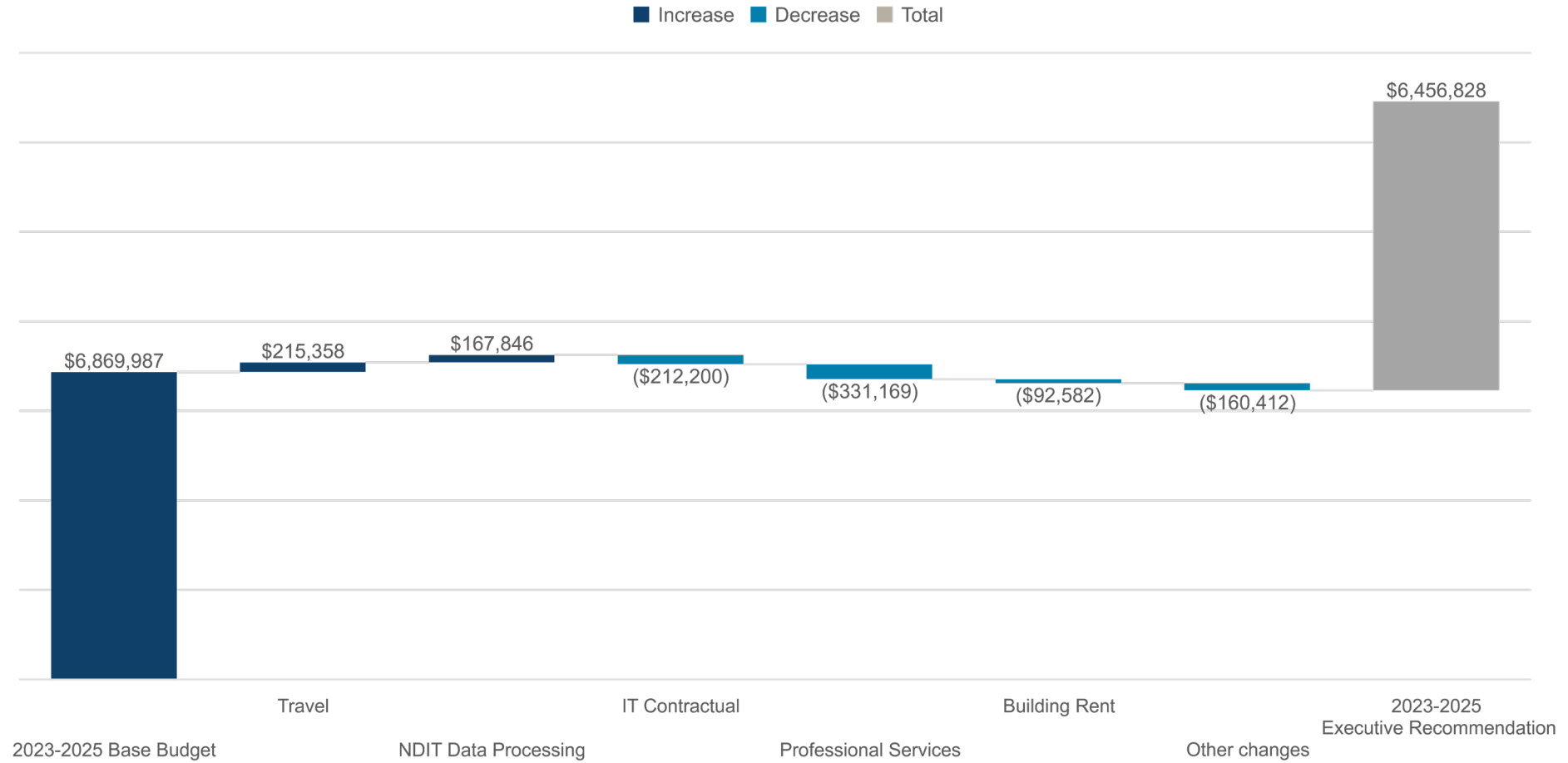
Overview of Funding Changes



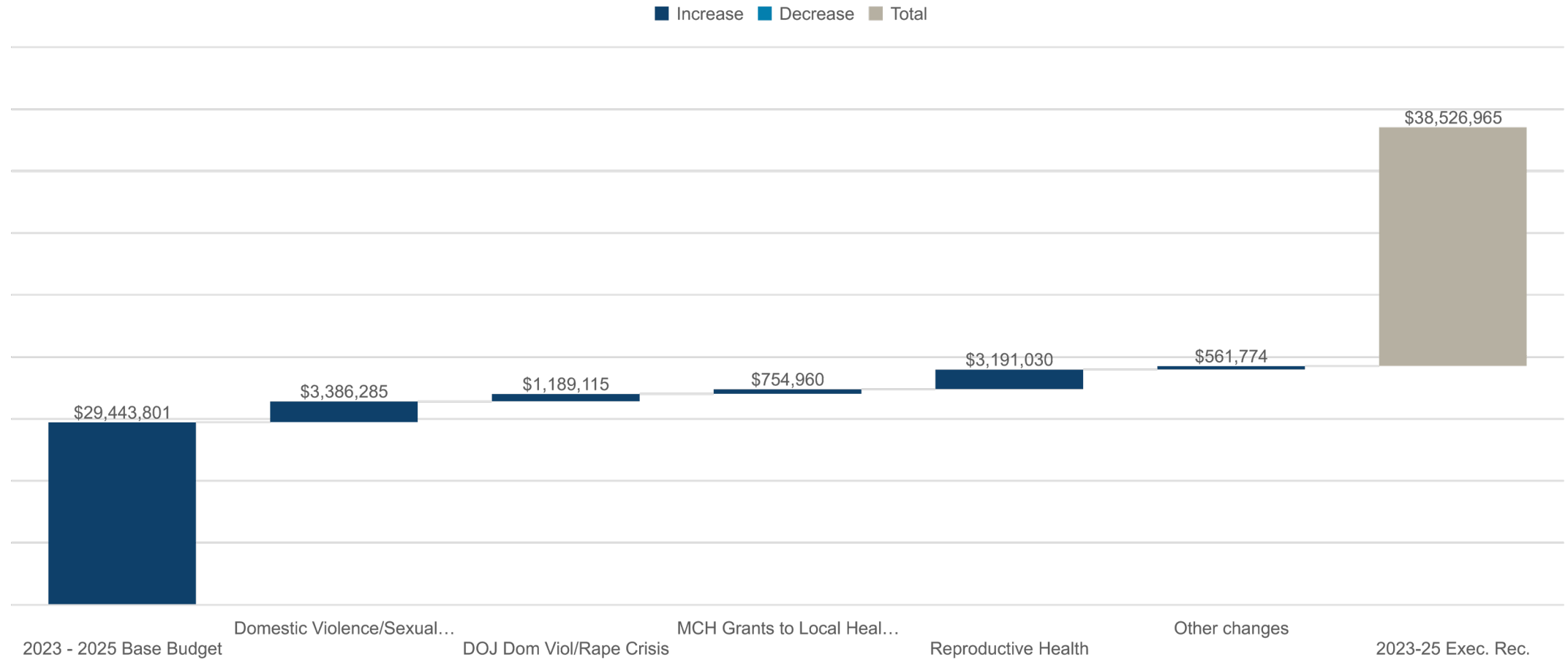
Major Salary & Wage Differences



Major Operating Differences



Major Grant Differences



A photograph of a family of three—a mother, a father, and a young child—holding hands and jumping in a field at sunset. The scene is bathed in warm, golden light, with the sun low on the horizon, creating a soft glow and long shadows. The family is in the center of the frame, with the mother on the left, the father on the right, and the child in the middle. They are all smiling and appear to be in a joyful mood. The background shows a field of tall grass or crops, and the sky is filled with soft, colorful clouds.

Summary and Key Takeaways

Strategies driving budget:

- Data and Evidence-based decision making
 - Community Engagement
 - Social Determinants of Health
 - Policy, Systems and Environmental changes (PSE)
 - Infrastructure, Workforce and Data Systems
- Utilizing these strategies is critical so every person has the opportunity to attain their highest level of health
 - To succeed, support is needed for key positions and expanded services
 - Tribal Health Liaisons
 - Domestic Violence/Rape Crisis
 - Tobacco Prevention and Control
 - Poison Hotline



THANK YOU

Kim Mertz | Section Director | kmertz@nd.gov | 328-4528